



G. A. EGMORE

Supplier of Solid Fuels and General Haulage

Telephone
BAWDESWELL 270

CORNER HOUSE
SPARHAM
NORWICH, NR9 5AQ

Davis Egg Sales

Egg Producers & Distributors

We Lay It On
If You Phone Us;

* PREPACKS
* KEYES TRAYS

MOOR FARM
FOXLEY DEREHAM
Tel. Bawdeswell 523
Residence 393



J. MEARS LTD.

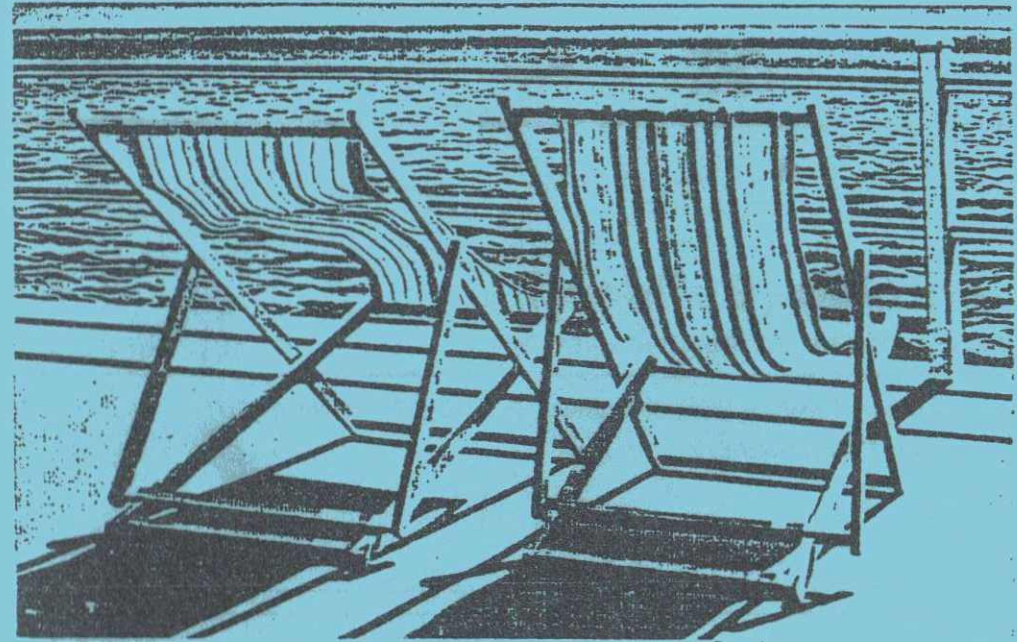
OLD HALL FARM BARN
THE STREET, FOXLEY,
E. DEREHAM, NORFOLK.

TEL. BAWDESWELL 251

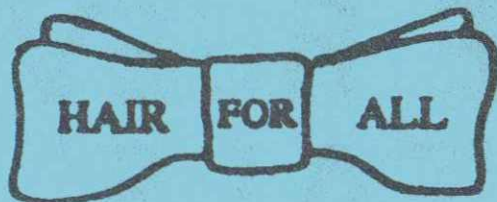


All Types of Building work undertaken.
New Houses, Extensions, Renovations,
Roofing, Repairs Etc.

THE REEVES TALE



JULY '91



LADIES & GENTS SALON

CHURCH FARM
FOXLEY



BAWDESWELL 214

Johnson (Builders)

BUILDING, DECORATING, PLUMBING & HEATING

BEC and NHBC Registered

Lezenda House, Reepham Road, Bawdeswell, Dereham, Norfolk NR20 4RU

Telephone: Bawdeswell 512



YOUR LOCAL
ESTATE AGENTS
WITH NATIONAL
COVERAGE

Ewings



ABBNEY NATIONAL
LOCAL OFFICE

ASSOCIATED OFFICES :

2 DUKE STREET, NORWICH AND

15a, MARKET PLACE, AYLSHAM.

MARKET PLACE, REEPHAM NR10 4JJ

(TEL: NORWICH 870473)

EDITORIAL JULY 1991

Dear Readers,

Can we first of all apologise to those of you who received copies with light print last month. The photo copier had serious medical problems which have now hopefully been cured so all should now run smoothly.

Summer's upon us again, the wellie season is here and the farmers are pleased to see the rain. Everybody's busy getting the lawnmowers ready so weekends the roar of Suffolks and Mountfields fill the air.

Don't forget that next months Reeves Tale is the combined August - September issue so all items for both months should be in by July 14th.

Could we take this opportunity to wish you all a very happy holiday, wherever you may be going.

Jane Thompson
Bawd 491

THANK YOU

Thank you to Mrs Helen Cook and family of Foxley for all their past help in delivering the Reeves Tale.

Foxley Rectory

July, 1991

Dear Friends,

Mary and I would first like to thank all of those who supported our coffee morning at the end of May. I'm pleased to report that £75 has been sent to the christian relief organisation TEAR Fund to be used towards its programme of famine relief in Ethiopia. I'm sure, like me, your hearts go out to those whose sufferings have been portrayed in the television news reports. Similar pictures from Bangladesh after the cyclone brought home afresh to me the words "to those to whom much is given, much will be required". One of the best ways I found to concentrate my thoughts, prayers and giving was to keep in mind the picture shown in several of the daily newspapers. This showed a young Bengali girl holding her baby brother. His name, so the papers told us, meant "life" in the Bengali language. His chances of holding on to life seemed very slim indeed, but at least he had the love and support of his sister. Her eyes appealed to many, making the point more strongly than words, that she needed help and that she needed it now.

The christian network is one of the strongest in the world and I'm always encouraged that TEAR Fund only works through christian relief agencies in the countries concerned. This means that the help gets through to those who need it most and is administered with christian love and sensitivity.

If any group to which you belong want to make a donation to either emergency or long-term relief work, why not contact me for details about TEAR Fund's work. We all want our contributions, however small, to be effective and well managed.

Yours most sincerely,

Grahame Humphries (Bawdeswell 397)

ACORN NURSERY SCHOOL

The children had a lovely morning at the Primary School's Teddy Bears Picnic, dancing, playing games and running races as well as eating vast quantities of biscuits and crisps. Thanks to all the staff involved and the children of class 1 for making us feel so welcome.

The trip to the Dinosaur Park was a gigantic(!) success. Children, mothers and fathers as well as grandmas enjoyed the day, standing under a diplodocus, swinging from the adventure play area in imitations of Neanderthal man and playing in the maze. Over the next few days the children will be baking dinosaurs and creating their own prehistorical models from clay. We welcome Emily, Sebastian and Joshua to Nursery School.

Future Events. Sports Day July 16th Weather permitting.

P. E. Williams

Beacon Europe

Beacon Europe is being held on 31st December, 1991 to mark Britains entry into the European Community. It is hoped that these "Beacons of Friendship" will be set up all over the country. They can be small family groups or large community affairs, but in any case the organisers have to have details by 31st August this year. The matter will be discussed at the next two Parish Council meetings so if anyone feels they would like to get involved in the project do please come along. We need to decide where the village could have a huge bonfire or standing beacon, who will co-ordinate the event etc. It could be exciting, it will certainly be an historic occasion so come on Bawdeswell, rally round with a bit of support.

Holkham Country Fair

Holkham Country Fair is being held on July 20th and 21st at Holkham Park from 9.15 am to 6.30 pm each day. Entrance is £5 per head (children under 14 free if with an adult)

BAWDESWELL SCHOOL NEWS

If you've got a child at Bawdeswell School you'll know that we produce a newsletter every month with all our 'happenings' detailed. If you're not on our circulation list and you would like to have a copy please let us know.

On Wednesday 22nd May Classes 1 and 2 went on their summer visit: their morning was spent on Wells beach collecting seaside bits and pieces, building sandcastles and finding out about the lifeboat. After lunch they went to the Dinosaur Park, enjoying the life size model reptiles, the maze and playground. Quite a full day!

The next evening the school hall rocked to the beat of George Kemp and his Silver Moon disco.

Since half-term we've been concentrating on further improvements to the book stock in the school library. We've sent ten boxes of outdated books via Watton Rotary Club to the Ranfurly Library Fund to help the Third World. Many thanks to the Mums who gave their time to help classify the 'good' books, on Friday 7th June. By careful budgetting in the last financial year we have been able to save enough to partially restock the library with more new information books. Thank you girls in Class 3 who helped with the classification of the latest stock and who have volunteered to take care of the library.

On Tuesday 11th June Class 3 went to Sandringham Park for the Countryside Days. This was an opportunity to see 'behind the scenes' at the Queen's estate - finding out about forestry, the greenhouses, game bird rearing, the stud farm, hunting dogs and many more countryside organisations. Of course, ice-creams, souvenirs and an adventure playground were available too.

The next day Year 6 children went to Reepham High School for a Maths Day. It was a chance to go on the school buses and to get to know the school to which they will be transferring in September. Activities included mapping the school grounds, building model bridges, laying out a newspaper, operating a floor turtle robot and other computer activities.

P. Shreeve (B'well 282)

Car & Commercial Repairs
Breakdown Service



Body & Paintwork Specialists
M.O.T. Preparation

LANGOR BRIDGE SERVICE STATION

NORWICH ROAD, FAKENHAM.
TELEPHONE: GREAT RYBURGH 252

Props: N.J. Drewry

H. A. COOK

OLD HALL FARMHOUSE,
FOXLEY, DEREHAM,
NORFOLK NR20 4QP.
BAWDESWELL 436

Plumbing
Electrical
Carpentry

Home
Renovations
and Maintenance

FOR HIRE :- DIGGER, LORRY + FORK-
LIFT



N. G. KING
Building Contractors

Graham Wright
Tel. Bawdeswell 546



Office
38 Kabin Road New Costessey
Norwich NR5 0LW
Tel. Norwich 742338

JUMBLE SALE IN AID OF BIG 'C'

Pleasy Tombling and Friends will again be having a jumble sale, cake stall and bric - a brac for the Big 'C' appeal on August 3rd at 2 o'clock at Jasmin House, Dereham Road, Bawdeswell.

PLEASE BE CAREFUL WHEN CROSSING THE BY PASS.

Parent and Toddler Group

As from Wednesday 3rd July we will be running a parent and toddler group for children aged from 6 months to 3 years at The Willows, The Street, Bawdeswell. The session will run from 1.30pm - 3pm every Wednesday. The cost will be 75p per family which will include coffee/tea, squash and biscuits for the children. The session will be supervised and the children will have plenty of interesting things to do and of course other children to play with. Please support this new venture. I'm sure the children will benefit from it along with the parents.

For further details please contact;

Linda Richardson Bawd 460

Memories of Bawdeswell

As most of you were probably aware Bawdeswell was recently featured on Radio Norfolk. We thought it would be nice if any of you who have memories of old Bawdeswell would like to send them to us at the Reeves Tale for publication. I'm sure many of us would like to share these with you.

The
BAWDESWELL
Store

The Street, Bawdeswell
Telephone: 284
Fax: 669

- * 1000 Title Video Library
- * Video Camera Hire
- * Fax Service
- * Photocopying
- * Cash's School Nametapes

**MAKE A CLEAN
SWEEP OF IT**
For all types of
Chimney Sweeping

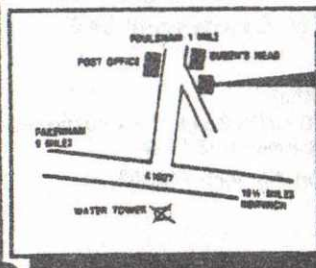
D. WALLACE
12 RICHMOND PLACE
LYNG, NORWICH NR9 5RF
Tel: Norwich 872554



Wednesday night
SPECIAL
Duck and Steak £6

The Gamp
RESTAURANT

LUNCH AND DINNER TUESDAY TO
SATURDAY *plus a*
TRADITIONAL SUNDAY LUNCH



The Gamp

"A Dickens of a
Good Restaurant"
CLAYPIT LANE,
FOULSHAM,
NORFOLK

(036 284) 4114

Street Naming Competition.

More Suggestions: Bellhall Crescent
Way
Corner
Gardens
Walk

Pilgrims Way.

Dog Training

Foxley Dog Training held at Foxley village hall
Tuesdays 7.30pm - 10.00pm.

Intermediate and advanced training for the more
ambitious.

Telephone Secretary 0603 870715

Instructor 0603 725422

A well trained dog is a pleasure to own.

Travel Announcement

L & R Travel, 8 Black Horse Close, Bawdeswell
Dereham. Telephone Bawdeswell 269 Are running
show excursions throughout the summer months.
For more details please feel free to contact
Louise or Rodney on Bawdeswell 269 for any
enquiry, or see notice board at the Bawdeswell
Stores.

BAWDESWELL AND FOXLEY PLAYGROUP

We had a very successful visit to the Rural
Life Museum at Gressenhall on Wednesday 19th June
where the children were able to try their hand at
washing clothes in a dolly tub, and use a wash-
board and mangle etc. It made us all realise
how much we take todays modern appliances for
granted. The children were of course fascinated
by the earth closet and squares of newspaper
The weather treated us very kindly and we were
even able to picnic under the apple trees. We
will be going again in the near future to visit
the farm and cottages as we didn't have time
to take it all in on one visit.

We would like to say a big thank you to Vic
Myhill for running the London Marathon. Well
over £100 was raised for playschool.

Cabaret night at the Old Rectory was a huge
success, local entertainers performed, Kerry
Andrews sang before a packed audience, Ian
Michaels comedy impressionist and the Silver
Moon Roadshow Disco from Mr & Mrs G. Kemp, all
gave their services. We send our thanks to all
who performed and supported us on the night
making it possible to raise £400 for playschool.

Fun day on Sunday 14th July on the recreation
ground will be the next event. Admission will
be free and the fun will start at 1200. There
will be many attractions ; stalls sporting events
and a barbecue.

Raffle tickets are on sale at the Bawdeswell
Stores or on the day.

Linda Richardson
Bawd 460.

THE BATTLE OF THE WOUNDED KNEE !

Did you know that the current record for cycling from Lands End to John O'Greets is less than 48 hours (1day, 21 hours, 2 minutes and 19 seconds) Not many people know that!

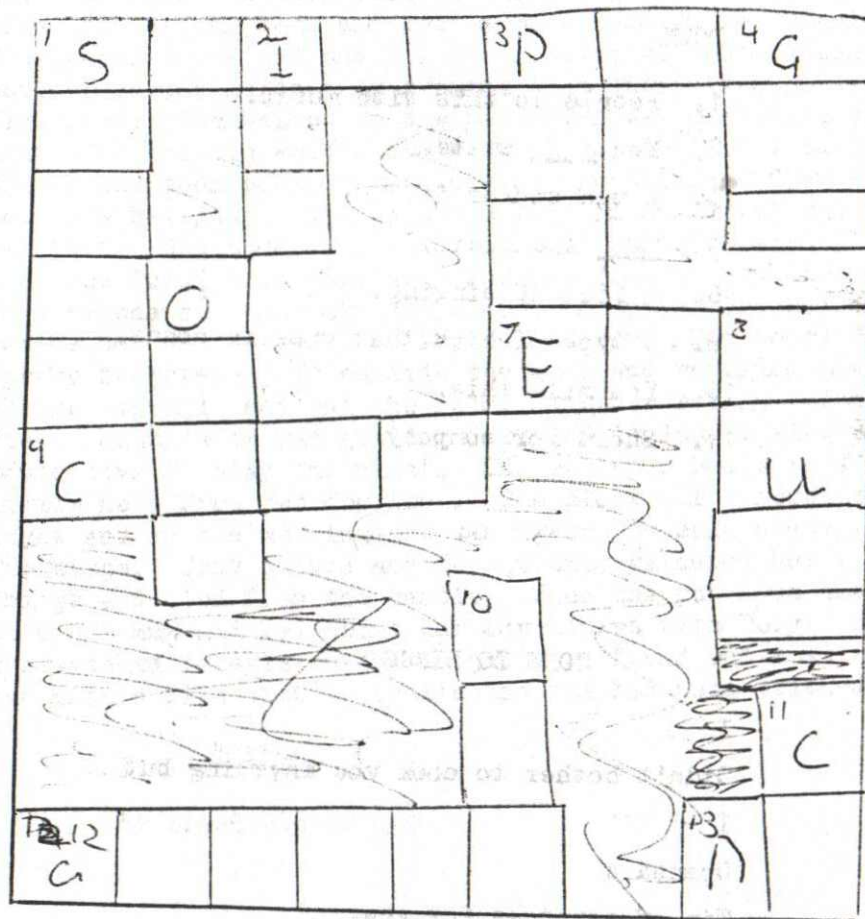
Four local cyclists intend to do the same journey, perhaps not so quickly but for a worthy cause, The Spastics Society, Pete Swales from Elsing, Mike Denmark from Foulsham, Mike Elsdon from Bawdeswell and Chris Hough from Foxley. The four intend to do the 860 miles in nine days with all money raised going towards the Spastics Society for people who suffer from cerebral palsy.

Cerebral palsy is a motor disorder caused by damage to parts of the brain. A special teaching programme known as Conductive Education was developed in the 1940's by a Hungarian doctor Andras Peto in which remarkable results have been attained both with cerebral palsied and spinabifida children. The Hungarian government provide this treatment through the Peto Institute and is part of the education system for all eligible children. There are at present 15 British trainees in Hungary at various stages of training on the four year course. The idea being to open a special clinic here in England where other conditions might benefit such as adults who have suffered strokes, multiple sclerosis or Parkinsons disease.

The four cyclists will average 95 miles a day and spend up to 9 hours a day in the saddle, their spokesman, Chris Hough, tells me that because of all the liquids lost through persperation regular 'top up' stops to replenish these lost fluids will have to be made. They hope to have the backing of a major local sponsor and the use of a mini bus as a back up vehicle. All four cyclists have participated in other sporting activities, Pete Swales having completed a marathon in a respectable 3 hours 15 minutes, Mike Denmark having run five half marathons and completed the London marathon in 3 hours 24 minutes raising nearly £1000 for charity in the process. Chris Hough ran last years London marathon and raised £200 for our very own Reeves Tale, he also covered

Hi, my name is Kevin Maylam and I am your Junior Editor and we say thanks Mrs. Bristow for doing the find the message, thanks to Paul and Liesl and Louis.

This month I have done a competition, you could win a mystery prize, here it is, it is a crossword and all the right answers will go in a hat. The first one out of the hat will win a mystery prize.



The clues are on the next page . . .

Clues: ACROSS

1. A game you play with rope.
5. Ready, steady ____.
7. At the e __ a story.
9. A type of scare _____.
12. Bow and _____.
13. Opposite to yes.

DOWN

1. People do this with music.
2. You ____ skate.
3. A man smokes it.
4. ____ and tonic.
6. A kind of singing.
8. A type of bird that goes in ponds.
10. You milk this.
11. Short for company.

GONE TO BINGO

I

Didn't bother to cook you anything but

I

Opened a

Tin of tomatoes for you.

by Paul Moore

Bawdeswell C.P. School

VAMPIRE CASTLE

Zoe was being dared at school by her mate Becky to go into Vampire Castle. By the end of the day she got impatient so she decided to show her bravery. So she set off on Saturday morning with her little dog Toby. It was one and a half miles to the castle itself and Zoe had to stop halfway to get her breath back. She was startled to see a black cat cross in front of her and even more surprised to see a broomstick propped up against a tree. But she carried on and soon came to the castle gates. An owl flew by and made her jump. A tarantula was climbing up the bars of the gate, Zoe sprang back and felt a cold hand on her shoulder. She looked round and saw nothing. Before she could push the gates they creaked open themselves and a bat flew past. She walked up the path which was scattered with leaves to the big wooden doors which was full of woodworm. She pushed them open, with a creak. Another bat flew by and made her jump. She walked slowly in and a rat ran by her feet. She came to a room with all white covers all over the furniture. She went and sat down on a white covered chair, dust was everywhere. A spider dropped down beside her and scared the life out of her. She heard spooky footsteps just outside the door and rattling chains. She got up and went out the room. Another rat ran by her feet. Outside it was getting dark and it looked like she would have to stay the night. She set up a bed with a little help from her dog Toby. She slept all through the night and in the morning she was awoken by some heavy footsteps. Toby barked and Zoe quickly gathered her things and fled from the castle. When she got home she told her mum and dad about her adventures with Toby. When she watched television that night she found out that they had made a film about a castle and she had been tricked.

THE END

By Liesl and Louise

ACROSTIC POEMS

(Work out the hidden message)

Your dinner is in the
Oven because I'm taking
Uncle
Jack
Up to your grandmothers
She hasn't seen him for years
There's also extra sauce in
A pan on the stove. It needs
To be warmed through
Even if you get in on time for once
Wash up and
Open a can of something if you're still
Ravenous. Although you
May not be if you work out my
Secret.

Y

A

Stop nagging Mum
Leave me alone!.
Ever heard of staying up?
Er Mum
PLEASE ! Let me stay up !

YAWN !

W

N

By
Trudi Martin

800 miles cycling through Spain last year with his companion and local character Mike Elsdon who had started his journey some two weeks earlier cycling through France to team up in Santander, his total journey was nearly 2,000 miles. I'm assured there were many amusing and unusual 'happenings' on the route, perhaps we could get Mike to put pen to paper - how about it Mike?

The four intrepid cyclists promise to report to the Reeves Tale about their trip and any interesting experiences along the way when they return in early August.

We wish them well.

FOXLEY CHURCH BEECH TREE

Because of the danger it poses the large beech tree on the west boundary of St. Thomas churchyard has been severely reduced in size. This has been an expensive exercise. Because the tree itself has a preservation order on it we have had to have the work done under the supervision of Breckland District Council. As yet we do not know the full cost of the work but it could be over one thousand pounds. Any contributions from well wishers would be most welcome. One way that we can receive a little relief is by selling some of the timber for fire wood. We would value this at £25 per load. Any offers to help with transport would be most welcome. If you would like to purchase a load please place your order by ringing the Rector on Bawdeswell 397.

Good News Messenger

As most of you will probably know Mrs. Eglinton has now moved out of the village to live at Worthing. She was the person who delivered your copy of the Good News Messenger and sadly this will no longer be delivered in the village. We thank Mrs. Eglinton for her work in the past and wish her and her family well in their new home.

Link - Up

Link-Up is a voluntary be-friending scheme for children aged 5 - 17, co-ordinated and funded by Norfolk Social Services Dept. The purpose is to recruit volunteers and match them up with children who need help and support from an adult friend.

For many young people who have little contact with caring adults, Link-Up provides them with a special friend who is prepared to devote time and attention to them alone, or involve them in family activities. The Link-Up friendship can be invaluable as a stable and steady influence especially if the young person is beginning to get into trouble.

Out of pocket expenses, such a petrol, can be met by Link-Up.

We ask our volunteers to commit themselves to one day a fortnight (usually at weekends), however this can be flexible depending on the needs of the child

If you would like to be a volunteer please contact Jo Duesbury on 0362 - 692540.

Tombola SwantonMorley

Thank you to all the villagers who donated to our stall, we had a very successful day at the Air Show, we raised, after expenses, £263.80, we have 43 items left over of the 290 given, we have decided to hold them over for our barbecue evening in September and hold a small tombola then. Thank you to our collectors and a special thanks to Tony, Charles, John and Guy for all their efforts on the day.

Mary Farthing.

MINUTES OF PARISH COUNCIL MEETING HELD IN THE SCHOOL ON MONDAY 3RD JUNE, 1991

PRESENT - Councillors Sparkes, Farthing, Battley, Curtis, Bramley and Strickland and the clerk. An apology was received from the Chairman, Cllr. Holmes.

It was proposed by Cllr. Sparkes and seconded by Cllr. Curtis that Cllr. Farthing should chair the meeting.

ELECTION OF VICE CHAIRMAN - It was proposed by Cllr. Sparkes and seconded by Cllr. Bramley that Cllr. Mary Farthing should become Vice Chairman.

CLERKS REPORT - FINANCE - We have received a VAT refund of £98.13. The balance of the account is £1175.76. Cheque No. 100060 £8.40 for hire of school for June meeting. The audit of the accounts will take place on 15th July 1991. All relevant documents will be available for inspection from 17th June to 5th July and will be brought to the next meeting on July 1st.

PLANNING - 3/90/841/CU Development of petrol service station on Fakenham Road. Application withdrawn.

The planning committee at Breckland have recently agreed to a significant increase in the number of applications which will not have to go before committee. This will speed the issue of decisions.

ANY OTHER BUSINESS - COMPLAINTS of noise from The Old Rectory. The Chairman is dealing with this matter.

PLAY EQUIPMENT for the Recreation Ground. Cllrs. Bramley and Strickland would like to set in motion a programme to provide play equipment on a part of the Recreation Ground pointing out that although the Village Hall building is very important it is a separate issue and there is nothing in the village for young children apart from a piece of grass. Cllr. Farthing said that the Hall is very important and once a shell is provided there is somewhere to begin proper fund raising events. Also that gates would need to be erected, a suitable surface laid etc. all of which would be very costly. Cllr. Curtis described the experiences of some villages with non-usage of equipment

and vandalism by older children. Cllr. Strickland pointed out that help was available from the Playing Fields Association in the form of grants and advice, that Bernard Matthews may give a donation, also Telethon who helped the Playgroup last year.

Cllr. Curtis thought that a play area in Rogers Hall Road Development would be most sensible.

It was agreed to invite a representative from P.F. Association to come and discuss the problem with members of the P.C. on site.

There have been complaints about the overgrown hedge between the school and the Old Rectory. Clerk will contact Mr. Lillwall to see if he will remedy the situation.

There being no other business the meeting closed at 8.30 p.m. The next meeting is 1st July at 7.30 p.m.

IMPORTANT NOTICE

At the next meeting of Bawdeswell Parish Council on 1st July, in the school, there will be on display a model of the proposed new village hall and sports field layout, together with plans. The model will be on display from 7.00pm in advance of the council meeting at 7.30pm. It is hoped that the architects who drew the plans will be in attendance to answer queries.

Although our finances are not yet assured, we are hoping to get planning permission shortly so that we are ready to move swiftly when the time comes - soon, we hope. We believe that many will wish to attend but for those unable to come, the model will be shown in the village stores thereafter.

A.R.H.

The next litter pick will be on Saturday 20th July at 9.30am. Meet outside the old village hall. Bring bin bags and gloves. We had a very good response last time. Keep it up folks.

Doors

Windows

Stairs

Fitted

Wardrobes

MP VIRGO JOINERY

Specialists in Quality
Purpose Made Joinery
Wood Turning
and Metal Crafts

Vic Myhill

28 Hall Road
Bawdeswell
Dereham
Norfolk NR20 4SQ

Telephone:
Bawdeswell (0362 88) 424

Turned

Bowls

Vases

Table

Legs

Stair

Ballisters

Table

Lamps

DOMESTIC
INDUSTRIAL
COMMERCIAL
AND
AGRICULTURAL
INSTALLATION
AND
REPAIRS

RAY LAKE

ELECTRICAL INSTALLATION
AND MAINTENANCE

MONTEREY HOUSE
GUIST ROAD
FOULSHAM

DEREHAM, NORFOLK
Tel. Foulsham 735

AFTER HOURS SERVICE



HENDRY & SONS Funeral Directors

PRIVATE CHAPELS OF REST
RICHARD HENDRY DIP.F.D.
MEMBERS OF THE N.A.F.D.

Station Road, Foulsham, Tel. Foulsham 249
Dereham, Norfolk NR20 5RG

TELEPHONE: BAWDESWELL 211

J. A. BAKER
FAMILY BUTCHER
BAWDESWELL, Norfolk



ORDERS TAKEN FOR ALL DEEP-FREEZE MEATS

**David
Nottage**



**Cabinet
Maker**

*Quality Hand-made furniture,
individually designed to
customers requirements.
Specialising in solid mahogany
and oak period style
furniture.*



**Tel: Bawdeswell
(036 288) 569**

Accommodation

Warm and Friendly atmosphere in rural Norfolk.
Modern bungalow in unspoilt countryside.
Easy reach of Horwich, Norfolk Broads and Coast.
Twin Bedded Rooms with Hand Basins H & C and
Central Heating
Tea/Coffee making facilities.

Mrs. Joan Parfitt
'Pol-Na-Chess'
Mill Road
Foxley
Dereham
Norfolk
NR20 4QX

Lounge, Colour T.V.

Ample Parking Space.

Tel.
Bawdeswell 350

CHURCH SERVICES FOR JULY AND EARLY AUGUST

Church of England Services

Tues.	2nd July	2.30 pm	PRAM SERVICE at B'well
Sun.	7th July	10.30 am 6.00 pm	H.C. at B'well E.P. at Foxley
Sun.	14th July	8.30 am 10.30 am	H.C. at B'well M.P. at Foxley
Sun.	21st July	8.30 am 10.30 am 2.30 pm	H.C. at Foxley FAMILY WORSHIP at B'well Holy Baptism at B'well
Sun.	28th July	8.30 am 10.30 am	M.P. at B'well H.C. at Foxley
Sun	4th August	10.30 am 6.00 pm	H.C. at B'well E.P. at Foxley
Sun	11th August	8.30 am 10.30 am	H.C. at B'well M.P. at Foxley

Methodist Services at Foxley Chapel

Details not available at time of going to press.

FOXLEY CHURCH FLOWERS AND BRASS CLEANING ROTA

Sun.	7th July	Mrs. P. Buxton
Sun.	14th and 21st July	Mrs. H. Cook
Sun.	28th July and 4th August	Mrs. Y. Gladwell
Sun.	11th and 18th August	Mrs. D. Harvey

Holkham Country
Fair

School term ends.

A Selection of Recipes

½ a leg of lamb
1 x 15oz tin of pineapple chunks in pineapple juice
2 tblsp. sunflower oil
2 bay leaves
1 small onion roughly chopped
salt

1. Cut the lamb into chunks
2. (This step is optional) Make a marinade with the oil, 3 tablespoons of juice from the tin of pineapple, bay leaf and onion. Marinate the chunks of lamb for about 2 - 4 hours.
3. Skewer lamb and pineapple chunks alternatively on kebab sticks beginning and ending with lamb. Season with salt and grill or barbeque turning frequently and brushing with the marinade or sunflower oil.
4. Serve on a bed of fried rice.

Pineapple Desserts

Pineapple Fritters

2 rounded tblspns rice flour
6 tblspns water
fresh or tinned pineapple

1. Mix the rice flour and water together to make a batter.
2. Dry the pineapple rings with kitchen paper and coat in the batter.
3. Shallow fry in sunflower oil

Bawdeswell Church Flowers.

Saturday 6th July Mrs A Middlemas
Saturday 13th July Mrs A. Middlemas
Saturday 20th July Mrs J. Vince
Saturday 27th July Mrs J. Vince.

Funeral

The funeral took place on 22nd May of Mr. Ernest Walter MUTTOCK known to his friends as SAM. He was 87 years old, he was born in Norfolk and lived in Bawdeswell then moved to Foxley. At one time he worked for Mr. Gurney, May he rest in peace.

Diary Dates for July

Monday 1st July 7.30pm Parish Council meeting.
Tuesday 2nd July 2.30pm Pram Service at All Saints B'Well
Sunday 14th July 12.00 Fun Day at the recreation ground
Saturday 20th July 9.30am Litter pick.
Saturday 20th July
Sunday 21st July Holkham Country fair.
Tuesday 23rd July School term ends.

REEVES TALE DIRECTORY

DOCTORS

Dr. D. S. Hanson	The Surgery
Dr. A. Macnair	Holt Road
Dr. P. J. Strickland	North Elmham
Dr. S. C. Hibberd	0362 668215

SURGERY HOURS

Monday	9.00 - 10.30	3.30 - 6.00
Tuesday	9.00 - 10.00	3.30 - 6.00
Wednesday	9.00 - 10.30	EMERGENCIES ONLY
Thursday	9.00 - 11.00	4.00 - 6.00
Friday	9.00 - 10.00	3.30 - 6.00
Saturday	9.00 - 10.00	EMERGENCIES ONLY

ANTENATAL CLINIC EVERY WEDNESDAY FROM 2.00 p.m.

CLERGY

Rev. Grahame Humphries (C of E)	Bawdeswell 397
Father Henry McCarthy (R.C.)	Dereham 694066
Rev. Richard Purvis (Methodist)	Dereham 52257
Capt. R. Clark (S.A.)	Dereham 696341

OTHER USEFUL NUMBERS

BAWDESWELL PARISH COUNCIL	A. R. Holmes
BRECKLAND DISTRICT COUNCIL	David Sayer
NORFOLK COUNTY COUNCILLOR	Mrs. Floering
MEMBER OF PARLIAMENT	R. Ryder
BAWDESWELL C.P. SCHOOL P. Shreeve	Bawdeswell 282
DEREHAM LIBRARY	Dereham 693184
BAWDESWELL POST OFFICE	Bawdeswell 209
BAWDESWELL GENERAL STORE	Bawdeswell 284
DEREHAM POLICE	Dereham 693451
CITIZENS ADVICE BUREAU - CHERRY TREE CAR PARK	
Wed. and Fri. 10 a.m. - 3 p.m.	Dereham 697776
DEREHAM SWIMMING POOL	Dereham 693419
BAWDESWELL GARDEN CENTRE	Bawdeswell 387
THE SILVER JUBILEE, FOXLEY	Bawdeswell 304



MODEL COTTAGE FARM
 LICENSED BOARDING KENNELS AND CATTERY
 "Where Animals come First"
 Collection / Delivery Service
 Any Inspection Welcome

Contact Nigel or Val Tombling
 Bawdeswell Road, Reepham
 TEL BAWDESWELL 323

R.D. Myhill
 for Building Alterations
 Painting & Decorating
 Tel. Bawdeswell 258

LEZENDA HOUSE

Reepham Road, Bawdeswell,
 Dereham, Norfolk NR20 4RU
 Telephone (036 288) 512
 Bed & Breakfast Accommodation
 TV, H & C, Tea making Facilities to all rooms
 Optional evening meal
 PROP. LES & EDNA JOHNSON