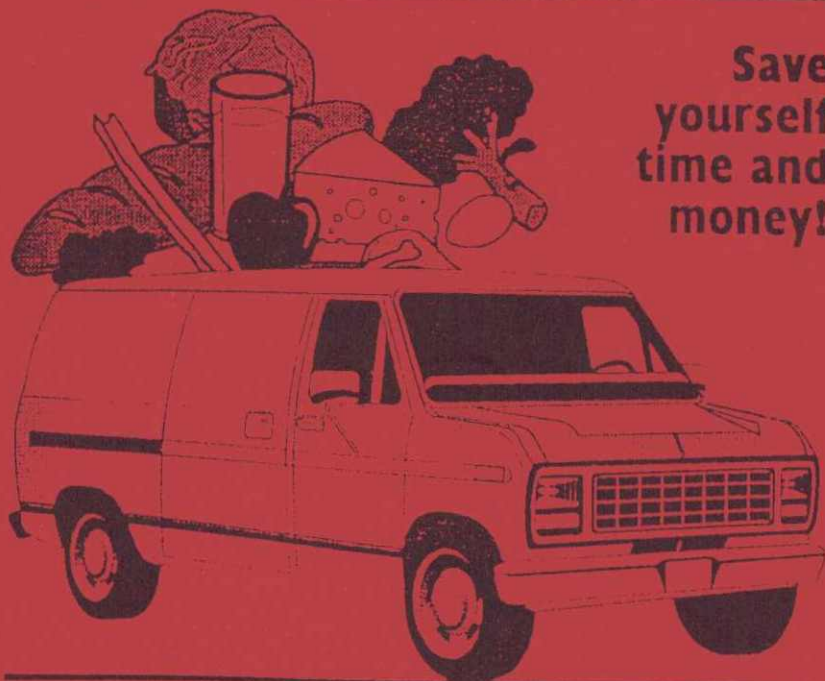


The
BAWDESWELL
Store

Newsagent & General Store, The Street, Bawdeswell, East Dereham, Norfolk NR20 4RT
Telephone: Bawdeswell (01362) 688284 Fax (01362) 688669

Take advantage of our...

FREE DELIVERY SERVICE
(except Newspapers)



The Reeve's Tale



*December & January
1995/96*

*Published for the Parishes of
Bawdeswell & Foxley*

BAWDESWELL GARAGE

Fuel, Accessories, Servicing
and Repairs

MOT

OPEN 7 DAYS

(01362) 688731

RTS SPORTING HOVERCRAFT



THE OLD RECTORY COUNTRY RESTAURANT, BAWDESWELL

Presents

Monday Night International

8 Courses from around the world £6.95
Tuesday-Friday, 3-course lunch for only £4.95
Tuesday-Friday night, 4-course meal for only £6.95

Thursday - Don't forget Fill-a-Tum Night
for only £7.50

Saturday night, 4-course meal for only £10.95
Sunday lunch, 3-course meal for only £6.95
The best for last - an introductory 4-course meal on
Tuesday nights for only £4.95

For reservations: Tel. Bawdeswell (01362) 688237
We are situated on the 1067 Norwich to Fakenham road



CLIVE SLAUGHTER

General Handyman Services
Extra Pair of Hands
Gardening, Hedge and Lawn Cutting
Fencing, new or renovated
Exterior and Interior Maintenance

Tel: 01362 683596



Foxley Rectory
December 1995



Dear Friends,

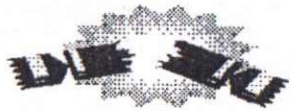
The lights were already brightly shining on the Christmas Trees all around Marks and Spencers one Sunday evening towards the end of October! The annual reminder of the festive season seems to get ever earlier and I heard a gentle jingle based on "God Rest you Merry Gentlemen" on Classic F.M. early last month! Someone has described us as shop-a-holics and certainly the tills will be busy over the next few weeks. If we keep things in the right proportion it can be an exciting time as we prepare to celebrate the coming of Christ that first Christmas. One of the names that our carols will give him is Emmanuel meaning - God with us. But its not just a look back to a date in history in first century Palestine, God with us is a present reality, the chance to know Jesus personally and to feel his guiding hand in our lives each and every day. That's something really worth celebrating and this Christmas we have the opportunity of sharing our celebrations with thousands of other people from around our country and beyond. Do please make every effort to come and share in the two Carol Services being recorded at Bawdeswell Church on Sunday 17th December. The first recording will begin at 3pm and will be a time of Readings and Carols to be broadcast on BBC Radio Norfolk on Christmas Eve. After a break for tea we re-assemble at 5.30pm to record a special Christmas Morning Service, so once you step back inside Church on 17th December it will really be Christmas Day! I might even ask the children what they've had for Christmas so we will all have to use our imaginations! So there's a very good reason for Christmas to come early in one Norfolk Village this year - make sure you celebrate it twice.

We extend our sympathy to those who have lost loved ones in recent months. Especially the relatives & friends of :- Mrs. Evelyn Cathpole - Mr. Brian Horrocks & Mrs. Kathleen Hall.

May I wish you all a very Happy and Joyous Christmas and a happy New Year.

Yours most sincerely,

Rev. Grahame Humphries (Tel: 01362 688397)



~ Editorial ~

Welcome to this joint December/January issue of your local village magazine. We hope you will find it interesting if not inspiring in places. We have gone to great lengths to fill it to capacity this month and thank those who have provided such excellent material for use in this publication.

We would like to **Congratulate** the Village Hall Committee and helpers for all their efforts in organising the Bonfire & Firework Celebrations last month. It was wonderful to see so many families attending this function and a pleasant, even though 'cold' evening was had by all.

The editorial team wish to mention and acknowledge the "four local teenagers" who took the time to apologise for their part in disturbances that were being encountered late at night outside homes in The Street and Bawdeswell Store. We thank Andy Battley for his support and the Police who took prompt action. It is not easy for any of us to ask forgiveness, but in this case those few who did take the courage to call round in person and say "sorry", your gesture was appreciated.

As Christmas quickly approaches, we are all so busy trying to make arrangements and organise the festivities in time, how many of us stop and feel compassion for families who have lost close relatives during the past year? Remember, especially the loss of Leah Betts, the eighteen year old from Essex who died from taking the drug "ecstasy". Our hearts and sympathy go out to her family this Christmas, we offer our sincere admiration to her parents for making their daughters tragic loss a public story. Let us hope we can all gain something from their trauma as we continue to strive, protect and teach our children about drug abuse.

Finally, our appreciation goes to John & Rene Kent and also to Gill Traffon's family for the "years" loose change collection you have kindly donated to the Reeve's Tale.

Copy for the February 1996 Reeve's Tale issue should be with us by 15th January. Remember the new advertising year starts April 1996, advertisers will be contacted during February/March to arrange new copy where necessary.

Kindest regards, Claire & Rafe, Jackie, Simon & Liz (Hon.Treasurer)

December 1995



Bawdeswell C.P. School News

On the 19th October we had a non-uniform day organised by pupils in year 6 which raised over £90 for our pond project. Thanks also to Matthew Bramley who organised a table-top bring and buy sale and raised £32. he was helped by Peter Thompson and Sam Bristow.

The art competition organised by the Parish Council to draw or paint a picture of the Village hall was won by Cathy Holt, Tara Watling, Stephen Nottage, Gemma Hunt and Robert Page. They were presented with book tokens and their work will be framed and hung in the hall for posterity. Thanks to Graham Wright for the difficult task of judging all the entries.

The children enjoyed the village Bonfire & Fireworks and appreciated the efforts of those people who gave up their time and energy to organise it.

Children in Year 1 have been on a woodland walk through Easton Woods, studying trees and their fruits. On the 17th November the older children enjoyed a performance by the West Midland Theatre Company who presented the Apprentice Sorcerer. Year 6 children met Mrs Tuck on November 23rd who gave a talk about transferring to Reepham High School.

As Christmas approaches the children, staff and Friends of the School are busy organising displays, an end of term puppet show, raffle, disco and carol singing at Bawdeswell Church.

Unfortunately Mr.Shreeve is still unwell and does not expect to return until the New Year.

Cath Parker (Acting Head - Bawdeswell School)

You Can-Can in Bawdeswell

Did you know we now have a Can Bank, it is at the village hall. In 1994 there were only 17 places in Breckland with Can Banks. Recycling helps the environment and the money raised goes to help children with cancer.

by Andrew Lees, Michael Strickland, Matthew Bramley & Peter Thompson.

BAWDESWELL PLAYGROUOP



Thank you to everyone who supported us by coming to the Usborne Book Sale. With the commission we were able to buy a book and lotto game. Our appreciation to all who helped with the Jumble Sale, we raised £84.42 total, half of which goes to the School.

Ivory Webb catalogues are available at Playgroup if you wish to order anything for Christmas, be quick!

We look forward to the children's Christmas Party, that is being held on the morning of Wednesday 20th December at Playgroup from 10am to 12 noon. A list of food required will be on the door, parents and carers please fill in your name next to that which you would like to provide. We also need you to continue to donate items like, toilet rolls, biscuits, squash, kitchen towels, tissues etc. and in this respect we are extremely grateful.

Please! any parents and carers who could help the children make Christmas Decorations and inspire other Christmas Novelty projects for the remainder of this term, your assistance would be most welcoming.

We still have vacancies for Monday, Wednesday and Thursday sessions. Finally, Playgroup closes on 20th December after the Party and re-opens Monday 8th January. We wish you all a very Merry Christmas 1995.

FRIENDS OF BAWDESWELL SCHOOL

The Nearly New & Jumble sales raised a total of £120, we would like to say a very big thank you to everyone who contributed their time and effort. Raffle tickets are on sale now.

	<u>DATES FOR YOUR DIARY</u>	
15TH DEC	CLASSES 1 & 2 CHRISTMAS PUPPET SHOW	
19TH DEC	CHRISTMAS RAFFLE DRAW IN SCHOOL HALL	2.45PM
19TH DEC	DISCO AT VILLAGE HALL FOR YEAR'S 3,4,5 & 6	7.00-9.00PM
20TH DEC	CHRISTMAS CAROL SERVICE BAWDESWELL CHURCH	1.30PM

G.A. EGMORE & PARTNERS

of Sparham



For Coal, Smokeless Fuels,
Pre-packed & Barbecue Fuels
Also Parts for Solid Fuel Fires
Regular Deliveries Six Days a Week in All areas
For Quality, Service & Reliability

PHONE BAWDESWELL (01362) 688270

RAY LAKE

DOMESTIC
INDUSTRIAL
COMMERCIAL
AND
AGRICULTURAL
INSTALLATION
AND
REPAIRS

ELECTRICAL INSTALLATION
AND MAINTENANCE
MONTEREY HOUSE
GUIST ROAD
FOULSHAM
DEREHAM, NORFOLK
Tel. Foulsham 683735
AFTER HOURS SERVICE



HENDRY & SONS LTD

STATION ROAD, FOULSHAM, DEREHAM, NORFOLK

Builders and Contractors · Suppliers of Conservation Materials
Plumbers and Decorators

Funeral



Directors

Tel. 01362 683249

Purdy Vertigan & Co. SOLICITORS

J M O Vertigan, T Purdy (Consultant)
Mrs A Kirby (Associate)

The Market Place
REEPHAM Norwich
NR10 4LZ

Tel: 01603-870606

Fax: 01603-871332

Evening and Saturday morning
appointments by prior
arrangement

For advice on your sale, purchase, mortgage or Wills

Design
& Build
Service



N.G. KING

Plans
Drawn

Building Contractors

Graham Wright
Tel. Bawdeswell (01362) 688546



Office
38 Kabin Road New Costessey
Norwich NR5 0LW

Tel. Norwich (01603) 742338

Hire Service for Diggers, Lorry and Forklift
Sand, Shingle and Hoggin Delivered

The MONTESSORI SCHOOL

The Old Chapel
Sparham
Norwich
NR9 5PP



Tel: Wendy McPherson
(Mont. Dip)
School: (01362) 688557
Home: (01953) 454590

DAY NURSERY

Open 8:45 - 3pm

NURSERY EDUCATION for Boys & Girls
Ages 2½ - 5½ yrs

We offer you and your child:
morning, afternoon or all-day sessions

Bring your child to see us and to experience the happy, calm and
productive atmosphere of the school.
Telephone me at the above number to arrange a visit or to ask
for our prospectus.

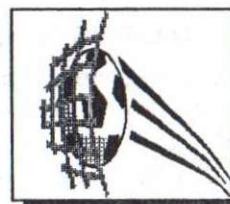
BAWDESWELL ROVERS NEWS



We have now played seven matches in the league and with four wins, one draw and two defeats, the boys should be quite pleased with their efforts. We currently lie 5th in the league and looking at the results of the other matches played it would appear as if the two teams we lost to are going to be the strongest in the league. Well done anyway lads!

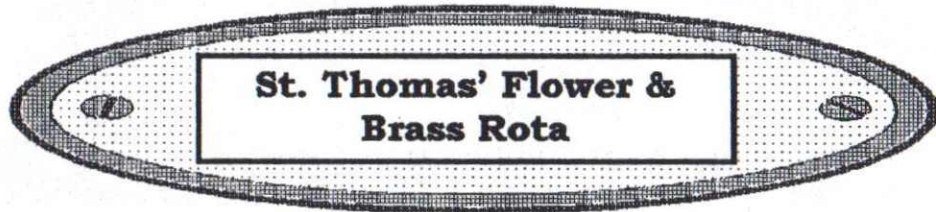
The team have now won their last 3 matches beating Sculthorpe 'B' 8-1 (Man of the Match - Timmy Edwards) - Necton 4-0 (Man of the Match - Tom Brett) and Dereham Wanderers 3-2 (Man of the Match - Gary Reynolds)

The Trophy for "Man of the Match" has been very kindly donated to the club by Joan Fowler of Folland Court and will be held by the winner for the week following the match it has been won at and needs to be brought back for the following game so that it can be re-represented to the next "Man of the Match". We hope this trophy will encourage the boys to try harder at each match.



We hope that the boys are enjoying their football and that those who do not get in the team every week do not get discouraged. We have a long season ahead and just as in the Premier League we will need all the boys to play their part. We are trying to arrange a friendly match for the boys who are on the periphery of the squad and some younger ones who may wish to join the club next season. (More news later).

Steve Lees Tel: 01362 688509



St. Thomas' Flower & Brass Rota

I should like to take this opportunity of thanking you all for making my task of arranging the Rota and consequently making so many friends, such a pleasure for almost the last 20 years. As everyone is aware I gave notice at the last Annual Church meeting that I would be resigning/retiring from this office after Michaelmas, 1995. Please are there any offers to carry on this most gratifying task? **Please!** the job consists of checking annually the availability of arrangers, drawing up and distributing a list to all concerned and also being prepared to arrange (or get done) Funeral Flowers if asked to do so by the relatives concerned.

As, sadly to date, I have no successor it is proposed that the people on the Church Cleaning Rota are asked to do the brasses up until Easter, 6/7 April, 1996. In the interim period, if anyone wishes to do alter flowers or put a flower or plant arrangement in the Church, please do so up until Lent - **21st February, 1996.**

The P.C.C. would much appreciate it, if as **many volunteers as possible** could join in decorating the Church for Christmas on **Friday 15th December** helping us all to spread the message of Goodwill in this festive Season of Pattersley Singers, Carol Service and Christmas Day not forgetting our combined Service with All Saints Bawdeswell on New Year's Eve.

N.L.G. (Church Warden)

Tel: 01362 688242

FOXLEY VILLAGE HALL

Mammoth Jumble Sale

Saturday 2nd December 1995 11am - 3pm

Jumble Sale with nearly new clothes, Cake stall and bric-a-brac. Books, Tombola or raffle competitions. Light lunches will be available with tea & coffee

Contact: Mrs. Joan Parfitt 688330

Why not be a festive host?

MOST of us spend Christmas surrounded by friends and relations, but Gloria Steward goes out of her way to invite strangers to join her family's festivities.

The Steward family share their Christmas with students from overseas. Gloria has never been abroad, but has welcomed people from all over the world into her home since she began as a volunteer with national charity Host (hosting for Overseas Students). "I've got a spare room and I don't like to think of them having Christmas all alone," she said. The students are generally studying at the

.....
by ROWAN MANTELL

University of East Anglia and may not be able to afford to visit their home countries for Christmas. Mrs Steward, of Oxnead Road, Mile Cross said; "We show them around. Sometimes they like to go to the Cathedral and they have Christmas dinner with us." Host is look for more local families willing to share Christmas with an overseas student. Spokeswomen Catherine Harrison said many students would be worrying about having to spend Christmas in virtually-halls of residence.

She said; "Many overseas student's feel isolated in a strange country where they have little contact with ordinary people and no way of forming friendships with them." "The Host scheme gives them the chance to meet and make friends with the local people and to learn about our way of life."

Sunil Diweullewa from Sri Lanka spent Christmas with a Norfolk family and said; "it was a wonderful visit. I will never forget their generous hospitality."

Host was founded in 1987, backed by the foreign and commonwealth office. ♦ If you are interested in finding out more about Host, then call **0171 494 2468**

The Children's Society

A Coffee Morning will be held at Foxley Lodge on Wednesday, 6th December (not 16th as previous) at 10am. All the usual attractions. Come along and stock up on some Christmas goodies - or even win the Raffle!

Our shops are always in need of your surplus clothes, household goods, books etc. We have received an interesting selection of your cast-offs during the last year, for which we give our thanks! We provide a useful service to the community in re-cycling items and selling them at reasonable prices, as well as helping to support the numerous urgently - needed programmes of care and advice for children and teenagers. If you have any unwanted possessions, please contact me on 01362 688650. I can collect if necessary.

Diana Harvey 9

Bawdeswell Parish Council

Minutes of meeting held on Monday 6th November, 1995

Present: Councillors Battley (Chairman), Sparkes, Farthing, Strickland and Johnson

Apologies: Councillors Wright and Cunliffe and the Clerk.

Minutes of last meeting: Agreed and signed.

Matters arising: None

Clerks Report:

Finance: Agreed cheque for sum of £920.28 to May Gurney for Play Area Fencing; and Clerks salary of £75 per month for October and November. Cheque received from Breckland D.C. for £3,000 as the second half of the precept.

Correspondance: Speeding problems - following previous decisions, the Clerk met with the Traffic Police and toured the village. On their recommendations a letter has been sent to Highways Dept. requesting larger, brighter 30MPH signs and SLOW on Reepham Road in both directions on the approach to The Street. At this point P.C.Jackson joined and gave further advice on the traffic problems which included the following ideas:-

- ◆ To have a zebra or pelican crossing in The Street, possibly near the Butchers?
- ◆ To write to Dereham Police again to ensure they support the Reepham Road proposals.
- ◆ To consider flashing warning lights on the school approach.
- ◆ To ask the school to send a letter to parents asking them to reduce speed on the way to school, to encourage more people to walk, to stop double/treble parking outside school and also to encourage the use of cycle helmets more.
- ◆ A 'Traffic Awareness' project could be initiated within school.

Best Kept Village Competition: Bawdeswell came 6th out of their group of 8 this year. The Judges comments will be summarised in the Reeve's Tale.

Bawdeswell Heath: Minutes of last meeting circulated. It is hoped that the situation on future maintenance plans will be made clearer next month.

Delegation of County Council Services: Norfolk County Council have written to all Parishes to invite them to take part in a trial project, taking on responsibility for grass cutting (verges etc.) and street lighting. It was agreed not to join the initial trial but await the results before deciding to join the scheme.

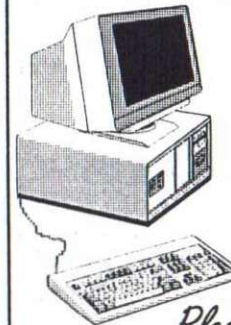
Recreation Report: An order has been issued for the fencing of they Play Area but the start of work has yet to be confirmed. The Bonfire Night Celebrations were well supported and very successful, financial report awaited.

Any other business: P.C. Jackson reported a regrettable mini-crime wave in the village, which has generated interest in starting a Neighbourhood Watch Scheme. It was agreed that leaflets should be distributed to gauge support and aim to have a full discussion on the outcome and future plans in February.

NEXT MEETING MONDAY 4TH DECEMBER 1995 - 7.30PM IN VILLAGE HALL

Anglian Business Services

Working from my office or your premises



- ◆ Computer Tuition
- ◆ Sage Accounts specialist

- ◆ Annual Accounts
- ◆ Book-keeping
- ◆ Typing
- ◆ VAT Returns
- ◆ Wages/Payroll

*No job too small
19 years experience
Very Competitive rates*



Jan Emmerson

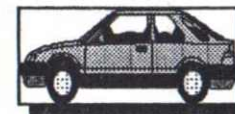
**Tel. 01263 587818
or 0402 152442**

Please call without obligation

Foulsham Car & Household Valet Services



- ◆ We now offer cleaning services for household carpets and upholstered furniture too.
- ◆ Complimenting our car, caravan, camper van & 4x4 vehicle valeting services.
- ◆ A friendly & professional approach, providing competitive prices guaranteed to beat any chore!



Tel: Carl 01362 683303
or 01362 688601 (after hours)
Mobile: 0585 090589

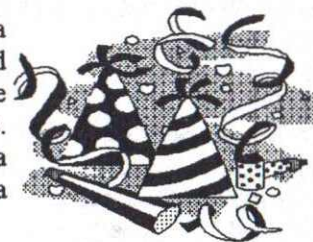
S.G. DEBENHAM LANDSCAPES

Preparation for -seeding & turfing - patios, garden walls
& driveways - tree felling & pruning, fencing & ponds

Contact: Simon
Tel: 01362 688382 or Mobile: 0589 090565

DID YOU KNOW WHY WE WEAR PAPER HATS AT CHRISTMAS?

It is traditional, at a Christmas party or during a Christmas meal, for people to put on paper hats and wear them for a while as part of the festivities. Only the most pompous members of the family refuse to do this. For the rest it is a little harmless fun. It seems like a trivial act with little meaning, but in reality it has a strange and ancient origin.



It can be traced back to an element of the Roman Saturnalia when, as part of the celebrations which ran from the 17th of December to the 23rd December, masters and slaves briefly changed roles. This tradition was handed down and survived the centuries, ending up as part of the old Twelfth Night festivities. Then a man and a woman were chosen at random to play the role of king and queen and were given mock crowns to wear. They 'ruled' the celebrations and their orders had to be obeyed.

The design of modern paper hats echoes this early custom. They are still shaped like crowns, or sometimes bishop's mitres. When they are put on, they symbolically give their wearers high status - in a joking way. So the simple act of wearing a paper hat taken from a Christmas cracker is a momentary, light-hearted return to the rites of ancient Rome.

Many of the old Twelfth Night customs were saved by being transferred to Christmas itself. This was the case with the joke wearing of crowns, and the newly popular Christmas crackers became an ideal way of distributing paper hats in a random way.

Well, there's something to talk about at the Christmas Party!

P. & P. BUILDING SERVICES

LAKE VIEW CLOSE, LENWADE, NORWICH, NR9 5SB
TEL: 01603 871967 OR 871197 MOBILE: 0589 198167

FOUNDATION TO ROOF REQUIREMENTS

WALLS - PATIOS - WINDOWS - DOORS
ROOFS - PLASTER - PLUMBING
ELECTRICAL - CARPENTRY
MAINTENANCE & REPAIR

CALL NOW FOR A FREE NO
OBLIGATION QUOTATION





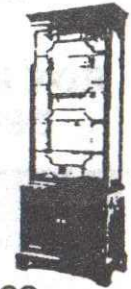
BEST KEPT VILLAGE REPORT FOR BAWDESWELL - 1995

BAWDESWELL CATEGORY OVER 500	LAST YEAR'S POSITION: 4 FROM 6 THIS YEAR'S POSITION : 6 FROM 8
Churchyard	Grass cutting in progress during judging. The seat is overgrown, perhaps it was cleaned after the judges left!
Hall	Village Hall most pleasing and must be a great asset to the community
Playing Field/Recreation Ground	Very Good. Well maintained. Bowling green excellent. We do not go onto school premises
Children's Play Area	Quite well maintained
War Memorials and fixed equipment	Good village sign with seats around
Residential Development	Generally Good, although there were some weedy areas along kerbs
Commercial Premises	Good. Clean and tidy and pleasant to look at. The Garden Centre is particularly well cared for.
Tidiness/Community Effort	Good apart from areas already mentioned. There were one or two areas of grass and weeds in The Street. There is a good community spirit in many areas of your pleasant village.
General comments	The Communal effort is evident in your village. Competition is very keen for the BKV. The cemetery and one or two small areas let you down.
Points for attention next year	Weedy areas along kerbs and footings in some residential areas. The cemetery was very over grown.

Winners:

- 1st Prize - Drayton
- 2nd Prize - North Elmham
- 3rd Prize - Felthorpe

David Nottage Cabinet Maker



*Quality Hand-made furniture,
individually designed to
customers requirements.*

Tel: Bawdeswell 01362 688569

Davis Egg Sales

Egg Producers & Distributors

- * PREPACKS
- * KEYES TRAYS
- Moor Farm
- Foxley Dereham

We Lay it On
If you Phone Us;

tel. 01362 688523



J. MEARS LTD.



OLD HALL FARM BARN
THE STREET, FOXLEY
E. DEREHAM, NORFOLK

TEL (01362) 688251

**All Types of Building work undertaken.
New Houses, Extensions, Renovations,
Roofing, Repairs Etc.**

ASSESSMENT AND TREATMENT AVAILABLE AT
HOME OR IN TREATMENT ROOM

Josephine Tym

M.C.S.P., S.R.P.

CHARTERED PHYSIOTHERAPIST
Physiotherapy can help the body's own healing
after injury at work or during recreation
JORDANS, JORDAN GREEN
WHITWELL, NORWICH, NR10 4RQ

Telephone: Bawdeswell (01362) 688281

FRIENDLY TUITION DOOR TO DOOR
AT COMPETITIVE RATES

**Gordons
School
Motoring**

"CALL NOW"
BOOK YOUR LESSONS OR
INTENSIVE COURSE

Contact: Gordon Waymouth
Tel: Bawdeswell (01362) 688386



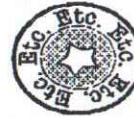
Ewings
Auctioneers, Valuers & Estate Agents

Branch Agents for
Nationwide Building Society



ASSOCIATED OFFICES:
2, DUKE STREET, NORWICH &
15a MARKET PLACE, AYLSHAM

MARKET PLACE, REEPHAM NR10 4JJ
TEL: (01603) 870473



DIARY OF EVENTS FOR DECEMBER 1995

DATE	FUNCTION	VENUE - DETAILS	TIME
02 DEC	MAMMOTH JUMBLE SALE	FOXLEY VILLAGE HALL	11.00AM-3.00PM
05 DEC	FRIENDS OF SCHOOL COMMITTEE MEETING	BAWDESWELL SCHOOL	8.00PM
06 DEC NOT 16TH	COFFEE MORNING & CHRISTMAS GIFTS	IN AID OF CHILDREN'S SOCIETY - FOXLEY LODGE	10.00AM
15 DEC	PATTERSLEY SINGERS CHRISTMAS CONCERT	FOXLEY CHURCH	7.30PM
17 DEC	BBC RADIO NORFOLK CHRISTMAS SERVICE RECORDING	CAROL SERVICES AT ALL SAINTS CHURCH - BAWDESWELL	3.00 & 5.30PM
19 DEC	CHRISTMAS RAFFLE DRAW	MAIN HALL AT THE SCHOOL	2.45PM
19 DEC	CHRISTMAS DISCO FOR YEARS 3,4,5 & 6	VILLAGE HALL	7.00-9.00PM
20 DEC	PLAYGROUP CHILDREN'S CHRISTMAS PARTY	PLAYGROUP	10.00AM-12.00AM
20 DEC	BAWDESWELL SCHOOL CAROL SERVICE	ALL SAINTS CHURCH BAWDESWELL	1.30PM

CHARITY CHRISTMAS CARDS

Orford Hill
(Bottom of Timber Hill)



Oct 21st - 19th Dec



Open 9.30 - 5.00pm Mon-Sat.
All proceeds go to Charities



Volunteers Needed

Norwich Family Friends has been formed to train volunteers to support families with children eight years or under, in times of stress. This is a preventive scheme for families living in Norwich. We are looking for people (Male or Female) who enjoy working with families to volunteer some of their time to do this work.

Alison says 'I became a volunteer as I had time and was willing to commit four or five hours a week to helping families. As I enjoy being with the people I feel that, as a parent, I have some skills which I could share whilst acknowledging that bringing up children is not easy.

I have total confidence in the project leaders who I knew would be offering a sound training with considerable support for the volunteers in this challenging and worthwhile work".

FURTHER DETAILS FOR THE NEXT TRAINING COURSE (one day a week for eight weeks) are available from Sue Hitchcock, Telephone or write to; The St. Faith's Lane Centre, 33 Prince of Wales Road, Norwich, Norfolk. NR1 1BG or Telephone: 01603 621702

The St. Faith's Lane Centre is administered by the Norwich Diocesan Board for Social Responsibility
Charity Registration No. 250651

CHURCH SERVICES FOR DECEMBER 1995 & JANUARY 1996



Sunday 3rd December
10.30am

6.00pm

Sunday 10th December
9.00am
10.30am

Sunday 17th December
9.00am
2.30pm
5.30pm

Wednesday 20th December
1.30pm

Thursday 21st December
2.30pm

Sunday 24th December
3.00pm
11.30pm

Advent Sunday
Holy Communion at Bawdeswell & Sunday School in the vestry

Evening Prayer at Foxley taken by Mr. & Mrs. Harvey

Bible Sunday
Holy Communion at Bawdeswell
Morning Prayer at Foxley

Holy Communion at Bawdeswell
For 3 o'clock recording of "Carols for Christmas Eve" at Bawdeswell
Recording for Christmas Day Service at Bawdeswell

Bawdeswell School End of Term Carol Service in Bawdeswell Church

Mums and Toddlers round the Tree at Bawdeswell

Christmas Eve
Carol Service at Foxley
Midnight Communion at Bawdeswell





CHURCH SERVICES FOR DECEMBER 1995 & JANUARY 1996

Monday 25th December
10.30am

Christmas Day
Family Holy Communion at Foxley

Sunday 31st December
10.30am

Combined Holy Communion at Foxley

Sunday 7th January
10.30am

6.00pm

Holy Communion at Bawdeswell & Sunday
School in the vestry
Evening Prayer at Foxley

Sunday 14th January
9.00am
10.30am

Holy Communion at Bawdeswell
Morning Prayer at Foxley

Sunday 21st January
9.00am
10.30am

Holy Communion at Foxley
Family Worship at Bawdeswell

Sunday 28th January
9.00am
10.30am

Morning Prayer at Bawdeswell
Holy Communion at Foxley

"The East Anglian Fuel Company"

The Price Is Right
At Phoenix

TOP QUALITY FUELS AND LUBRICANTS
FOR THE HOME AND INDUSTRY

Phoenix Petroleum Limited

Norwich (Lenwade) 01603 872746

0345 678900



We can offer you
SPECIAL PRICES
We won't let you
down on
delivery!

- HEATING OILS
- REGULAR
- PREMIUM
- PARAFFIN
- GAS OIL
- DERV
- ENGINE OILS & GREASES
- BOILER SERVICING
- BUDGET PAYMENTS

**ODD JOB
LEN**

OF NORTH ELMHAM



CARPENTRY MAINTENANCE

PAINTING AND DECORATING

FURNITURE REPAIRS ETC

*Keep this by your 'phone -
you never know when you
will need me!*

TEL: 01362-668465



9 CEDAR CLOSE
NORTH ELMHAM
DEREHAM