

CONTENTS

| | |
|-----------------------------|---------|
| NOTICE BOARD | page 2 |
| EVENTS DIARY | page 3 |
| BAWDESWELL EXTRAVANGANZA | page 4 |
| FOXLEY VILLAGE HALL | page 5 |
| HISTORY EVENT | page 5 |
| FLOWER DEM. & LUNCH | page 6 |
| B.A.G. | page 7 |
| VILLAGE CINEMA | page 9 |
| CRAFT & BOWLS | page 10 |
| SUMMER CLUB | page 11 |
| CANCER CHARITIES | page 13 |
| SING YOUR HEART OUT | page 15 |
| FILM CLUB | page 15 |
| REEPHAM LEARNING | page 17 |
| FOXLEY PARISH COUNCIL | page 18 |
| ROTARY | page 19 |
| PROJECT BAWDESWELL | page 21 |
| CHRISTMAS OUTING | page 23 |
| GROUND FORCE | page 23 |
| BOOK CLUB | page 25 |
| CHURCHES' CYCLE RIDE | page 29 |
| BENEFICE NEWS | page 31 |
| OPEN CHURCHES WEEK | page 33 |
| FOXLEY CHURCH | page 34 |
| RECTOR WRITES | page 35 |
| CHURCH SERVICES | page 36 |

Reeve's Tale *Magazine* Aug/Sept 2011

POST
OFFICE®

**TUESDAY & FRIDAY
MORNINGS
9am - Noon**

**in
BAWDESWELL CHURCH**

POSTAL SERVICES

PENSIONS

CAR TAX

BILL PAYMENTS

BANKING
ETC

**COPY FOR THE OCTOBER 2011
ISSUE BY 15th SEPT PLEASE**

e-mail : magazine@bawdeswell.net

NOTICE BOARD & LETTERS

Remembering George !

On the 11th December 2010 my husband passed from this life after a brave struggle with his terminal illness. I, and my immediate family, decided to have a very small event at the Kings Lynn crematorium. You will remember how difficult the weather was at that time.

We now plan to celebrate his life and work by exhibiting his collection of photographs (his lifetime passion) and memorabilia at Foxley Village Hall on Saturday, 24th September 2011. The hall will be open from 12 mid day until 6 p.m. and all those who would like to remember George are invited to 'drop in'. This will be very informal, just like George. Hope to see you then.

Anne, George (junior) and Daniel Weitz

Adoption of Hall Road Sewers

After years of uncertainty and anxiety about the unadopted sewers at one end of Hall Road, Anglian Water has announced on its website www.anglianwater.co.uk that from the 1st October 2011 they *will* be taking on ownership of all sewers leading into the main sewerage system as a result of government legislation.

They emphasise though that the connecting drains within the boundary of properties remain the responsibility of the property owners.

Bawdeswell Village Fete

Thank you all who took part and all who supported this popular event. The weather was very kind to us again and we raised over £1,200 which will be shared out equally amongst the participating clubs/groups.

There is to be a **Bawdeswell Extravaganza** on September 3rd in aid of the New Village Hall. See page 4 & a **Flower Arranging Demonstration with lunch** on September 6th also in aid of the New Village Hall (page 6).

Commissions taken for watercolour paintings of houses, gardens, local scenes etc., from £20. All proceeds to the New Village Hall fund.



For details and to see examples of art work phone Phil Hague on 01362 688672 or email phil@hallroad.plus.com

AUG/SEPT EVENTS DIARY

| | |
|--|---|
| Sat 30 July | Citizens Advice Bureau Garden Fete 11am at 55 Theatre Street, Dereham |
| 1 st – 5 th Aug | Children's Summer Club, <i>see page 11</i> |
| Wed 3 rd Aug | Ground Force tidying up the playground garden 9.30am, please join in! |
| Thu 4 th Aug | Book Club meets at Old Workhouse Bar, 7.30pm |
| 6 th – 13 th Aug | Open Churches Week throughout Norfolk |
| Thu 11 th Aug | Craft Afternoon at Bawdeswell Village Hall Annexe |
| Sat 13 th Aug | History Beneath Your Feet, Foxley Village Hall 7.30pm Bawdeswell Cinema "The Social Network" 7pm |
| Sun 14 th Aug | Bawdeswell Film Club, <i>see page 15</i> |
| Wed 17 th | Ground Force tidying up the playground garden, 6.0pm |
| Sun 21 st Aug | Tea Party at Bawdeswell Village Hall in aid of Marie Curie Cancer Care 2pm |
| Wed 24 th Aug | Coffee Morning 1030am at Foxley Village Hall |
| Thu 25 th Aug | Craft Afternoon at Bawdeswell Village Hall Annexe |
| Sat 3 rd Sept | Bawdeswell Extravaganza, <i>see page 4</i> |
| Tue 6 th Sept | Flower Arranging Demo. & Lunch at Jordan Green Farm, <i>see page 6</i> |
| Wed 7 th Sept | Ground Force tidying up the playground garden 9.30am |
| Thu 8 th Sept | Craft Afternoon at Bawdeswell Village Hall Annexe |
| Sat 10 th Sept | Norfolk Churches Trust Sponsored Cycle Ride, <i>see page 29</i> |
| 24 th – 25 th Sept | Reepham Art & Craft Festival, Old Brewery House |
| Wed 21 st Sept | Coffee Morning at Foxley Village Hall 1030am |
| Thu 22 nd Sept | Craft Afternoon at Bawdeswell Village Hall Annexe |
| Wed 31 st Sept | Ground Force tidying up the playground garden 6pm |

Foxley Village Hall – regular events

| | |
|------------------|----------------------------------|
| Exercise Classes | Every Tuesday morning at 9.30am. |
| Short Mat Bowls | Every Monday & Friday Evening |
| Bridge | Tuesday evening 7.15pm |
| Table Tennis | Wednesday evening. |

Bawdeswell Village Hall - regular events

| | |
|---|---|
| *Parish Council | Normally 1 st Monday of Month (not Jan or Aug) |
| *Village Hall Committee | Normally 3 rd Monday of Month |
| *Table Tennis | 2nd & 4th Mondays of month |
| Countrysiders | Every other Wednesday in term time |
| WeightWatchers | Thursdays 6.15pm |
| Running Club | Thursdays 8pm |
| Little Monkeys (Parent & Toddler Group) | Fridays 9.15am |
| JayCee Bridge Club | Fridays 2.15pm |
| Pilates | Fridays 7pm |
| Seekers | 1st Saturday of month |
| *Village Cinema Matinee | Some Months on Saturday 3pm |
| *Village Cinema | Monthly on a Saturday 7pm |
| *Film Club | Monthly on a Sunday 2.30pm |

*Check ad or article in magazine for dates this month



BAWDESWELL EXTRAVAGANZA

Saturday September 3rd 11am to 4pm

Displays of military vehicles, classic cars, tractors,
stationary engines

PLUGHING FOR FUN FOR TRACTORS

CRAFT STALLS, FACE PAINTING, RAFFLE, LIVE MUSIC,
BOUNCY CASTLE, MINI WURLITZERS AND MORE

*Wing Commander Wallis with his Auto-Giro
'Little Nelli' famous for their part in the Bond film
'You Only Live Twice'*

Ploughman's Lunch, Bar & Refreshments

At the Recreation Ground & Common Lane

More Info from Tony Hood, 01362 688218

Proceeds for the New Village Hall

FOXLEY VILLAGE HALL

**DATES FOR COFFEE MORNINGS
August & September**

Wednesday 24th August at 10.30am
Cookies, mardle and raffle

Wednesday 21st September at 10.30am
Cookies, mardle and raffle

Everybody very welcome



HISTORY BENEATH YOUR FEET

A fascinating, hands-on evening with
Graeme Simmonds

demonstrating, with a large selection of his own 'finds', what unusual objects we might discover in our gardens.

FOXLEY VILLAGE HALL
Saturday 13th August at 7.30pm

You are welcome to bring along your own 'finds' for identification.

Tickets: £6 to include a glass of wine & savouries
(01362 688494/ 688650)

All proceeds to St Thomas' bell fund

Flower Arranging

Demonstration

by Crystal Dyball



"Celebrations"

AT JORDAN GREEN FARM

Tuesday 6th September

*Lunch at about 12.30
Hog Roast in a Bap
Cheese Board & Fresh Fruit
Soft Drinks*

Demonstration to start at 2pm

Tickets £12.50 Tel: 01362 688240
from Sue Lilwall
(Cheques payable to S J Lilwall)

Jordan Green Farm, Whitwell, Norwich, NR10 4RQ

There will be a Vegetarian option

In aid of Bawdeswell's new village hall

Summer at the Hall

Hall & Café

The Hall & Café will be open every weekday afternoon, 2pm to 4pm, from Monday 25th July to Friday 2nd September including the Bank Holiday.

Activities

Every Tuesday afternoon there will be an organised activity.
Every Wednesday afternoon there will be a 'crafts' session.

Please see posters at the hall and around the village for further details of these activities.

Films

Children's matinee films will be shown on Saturday 13th August (doors open 2.30pm) and on Monday 15th August (doors open at 2pm). Details of the films are on the Village Cinema Notice Board in the hall.

Sports Equipment

Various items of outdoor sports equipment will be available for use from 2 – 4 pm any weekday afternoon on payment of a returnable deposit as follows:

- Football/basketball/cricket bat and ball: £1
- Rounders set/boules: £3 (an adult's signature required)
- Quick cricket set: £5 (an adult's signature required)

Volunteers

Thank you to those who have recently volunteered but we can always use more volunteers to help with the Café and activities. BAG pays for a CRB check and for optional training including a 1st Aid course and child protection awareness.

If you would like to help please contact Janet on 688749.

Table Tennis – fun evenings - EVERY MONDAY

Everyone is really pleased that we can play table tennis every Monday evening. It is great fun. If anyone is interested, do come along and join us. Entrance fee is - **£2 adult and £1 under 16** to cover the cost of hiring the hall. Anyone under 16 must be accompanied by an adult. For more information please contact Janet on (01362) 688749.


Running Club

The Running Club are still meeting in the village hall! Circuit training 8-9pm Thursdays - anyone is welcome, only £2 and all profit goes to the NEW HALL FUND. Contact Fel on 07957254503 for more information.

BAGY needs extra helpers... to help organise and run some of the BAG activities in the school holidays and help at BAGY Breakfasts. You need to be aged between 11 and 18 and have lots of energy!

Please contact Fel Roberts on 07957 254503 for more information

Feel you need support with getting the best out of your computer?
Let's see if together we can get your computer to listen to you.



Alex Kirby - 01362 688787 - alexckirby@hotmail.com

In aid of BAG so any donations will be welcome.

Software experience includes - eg MS Word, Excel, PowerPoint, Desk Top Publishing, photographs, Graphics, CAD, e-mail, internet, Facebook, twitter.

This offer is for a limited time - Wednesday evenings only.

For hardware and systems issues, don't call me. I leave that to others too!



Saturday 13th August- doors open 2.30pm

FREE Children's Matinee

Saturday 13th August - doors open 7pm

The Social Network

Monday 15th August- doors open 2pm

FREE Children's Matinee

Saturday 8th October - doors open 7pm

BridesMaids

Saturday 12th November - doors open 2.30pm

FREE Children's Matinee

Saturday 12th November - doors open 7pm

The Way - Martin Sheen & James Nesbitt



News from the Bawdeswell Bowls Green



The three clubs based at the Bawdeswell Green are:

Bawdeswell Bowls Club – contact Paul Digby – 01362 688615

Bintree Bowls Club – contact Richard Johnson – 01362 688016

Foulsham Bowls Club – contact Mike Stebbings – 01603 879590

The clubs play in various leagues at venues throughout mid-Norfolk.

Bawdeswell play in the Dereham League and are the defending champions. They are continuing to do very well and are once again top of the league.

Bintree are continuing to have mixed success in the 2nd division of the North Elmham League. They are however holding their own in mid-table. They also play in the Whissonsett League and have had a couple of good victories recently, so confidence in their ability to compete in that league is building.

If you would like information about any of the clubs, please give the contacts a call. All the clubs welcome new members. Alternatively, if you would just like to give bowls a try to see if you would like to join one of the clubs, come along to the green on a Wednesday at 7.00pm and we can teach you the basics. Hopefully you will enjoy it enough to want to join!

ALL AT BAWDESWELL VILLAGE HALL – FILM STARTS 30 MINS AFTER TIME SHOWN ABOVE

TICKETS JULY/AUGUST £3.50 ADULTS, £2.50 U18, FAMILY OF 4 £10

FROM OCTOBER £4 ADULTS, £3 U15, FAMILY OF 4 £12

THE BAR/CAFE WILL BE OPEN FOR REFRESHMENTS

CALL 01362 688749 FOR MORE INFORMATION OR

SEE WEB SITE <http://bag.norfolkparishes.gov.uk/village-cinema/program-for-2011/>

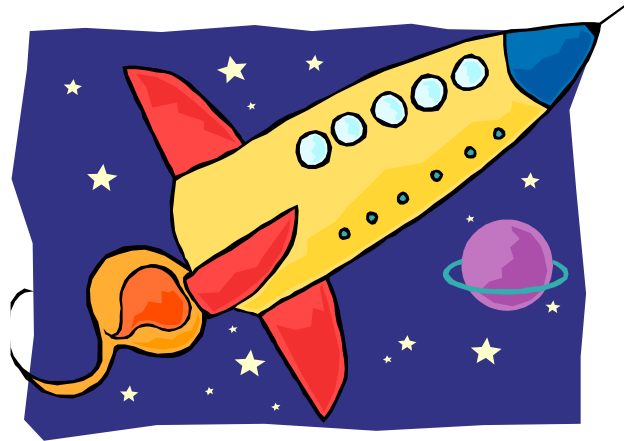
We regret that, due to other commitments & hall bookings, there will be no films in September or December



BAWDESWELL CRAFT GROUP

We will continue to meet over the summer but are likely to be in the Portakabin because the hall will be fully committed to children's activities. We are a small friendly group and supportive of each other and each other's projects. We are pleased to have just donated another £60 to the New Hall fund. We are always happy to greet new members and if tea and talk is all someone wants that is okay. We meet on the 2nd and 4th Thursdays of the month and our next meetings are on 28th July, 11th and 25th August, and the 8th and 22nd September in the Village Hall or Portakabin. Enquires to Marietta Menzies 01362 688 400.

SUMMER CLUB



STARSHIP DISCOVERY

Join us at Sparham Church each day of the week 1st - 5th August from 10-12 for a morning of games and activities. Cost will be £2 per session and all children aged 6 - 11 are welcome. We will finish on the Friday with a short presentation of what we've been doing all week followed by a picnic at the Old School Room.

For more information please ring Sandi on 01362 688268

| | | |
|---|---|---|
|  | Paul Burgess PLUMBING & HEATING SERVICES |  |
| FREE ESTIMATES/NO CALL OUT CHARGE | | |
| BOILER INSTALLATION & BOILER SERVICE / REPAIRS | | |
| Complete Bathroom Installations Design (Plastering, Tiling Etc.) | | |
| ALL YOUR PLUMBING NEEDS | | |
| <ul style="list-style-type: none">* Ball Valves & Tap Washers* New Radiators & Valves* Cold Water Tanks* Hot Water Cylinders/Immersion | | |
| Telephone: | Mobile : | |
| 01328 863881 | 07850 340761 | |



Blooming Great Tea Party

In aid of Marie Curie Cancer Care

From 2pm until 4.30 pm Bawdeswell Village Hall

Suggested Donations :

Cream tea £2.00, Cheese scone with tea £2.00, Buns 50p Tea and coffee 50p
Squash 20p Biscuits 5p

Guess the weight of a cake Guess how many sweets in the jar

Raffle - Prizes include: A family swim at Dereham Leisure Centre, 2 X vouchers for up to 6 people for an hour's bowling at Strikes Dereham, Aromatherapy gift from Dragonfly Therapy Room Bawdeswell, A £5:00 voucher for Baker's Butchers Bawdeswell, A 2 course carvery for 2 people - Kings Head North Elmham, A meal for 2 at The Wensum Lodge Fakenham, Bacon/Sausage baguette plus tea or coffee at V's - Reepham, an Aromatherapy gift from Rose Cottage Therapies Bawdeswell, 2 £5:00 vouchers for Superbowl/Megafun Fakenham, Wine - Diane's Pantry Reepham & The Railway Tavern Nth Elmham, Mcoll's Bawdeswell, a fruit basket from Meloncaulie Rose - Reepham, a plant from Lavenders Blue - Reepham, a set of 3 Photo frames - Reepham Hardware, 2 cinema tickets - Hollywood Cinema Dereham, Mystery Gift From Bawdeswell Garden Centre, a meal for 2 - The Brewery House Reepham, Hair cut and style - Anita's Hair Fashions Matishall. *Plus other prizes.*

Cancer Charity Launch Annual Fundraiser

Macmillan Cancer Support is once again preparing for its largest annual fundraising event, the World's Biggest Coffee Morning. With 2011 marking the charity's 100th anniversary, Macmillan is committed to making this year's World's Biggest Coffee Morning the biggest one ever.

Though the given date for the event is 30th September

2011, participants are reminded that they can hold their Coffee Morning for the charity on any date of their choosing. Whether at home, in the church hall, at the village fete, on the beach or in your workplace, a Coffee Morning for Macmillan can take place anywhere you choose. It's all about having fun, eating cake and making a big difference. Even £1 can help cancer patients and their loved ones across the region and beyond receive vital emotional, medical, practical or financial support.

Last year 43,000 people across the nation made their cuppa count, raising a staggering £8 million for people living with cancer. As treatments improve, people are living with cancer for longer meaning the work of Macmillan is needed more than ever. World's Biggest Coffee Morning turns 21 this year too so there is even more reason to put the kettle on.

Registrations are now open. Go to www.coffee.macmillan.org.uk or call 0845 602 1246 to receive your free fundraising pack and help make 2011's World's Biggest Coffee Morning the biggest one ever for Macmillan Cancer Support.



ANNE WEITZ

GTCL LTCL Dip Ed (Lond)
Member ISM-EPTA-BKA
Tuition in Piano, Theory,
Sight Singing; Musicianship
ABRSM and TCM exams
Beginners to Advanced
All ages welcome
01362 688466

Carpet supply/fitting

All types of carpet & vinyl supplied and fitted. Choose at home from a vast range, floor screeds, underlays, gripper etc.

Please call
Jeremy Tyler

01328 829098, 07834 401362
Altro safety flooring
Hygiene and wet room flooring



WANTED

Do you have old or rotten trees, perhaps wind fallen or broken ones, I will cut and remove free of charge, anything considered.

Call D J Taylor: 07981 792790 evenings or weekends.

G.A.EGMORE & PARTNERS

of Sparham

Coal, Smokeless fuels,
Pre-packed & Barbecue fuels

Also parts for Solid Fuel Fires

Regular Deliveries 6 days a week in all areas. Quality, Service, Reliability.

PHONE 01362 688270



NICKY P. HAIR DESIGN

FREELANCE
HAIRDRESSER
10 YEARS EXPERIENCE
COVERING ALL ASPECTS OF
HAIRDRESSING
For Appointments tel: 07799298020

Josephine Tym

MCSP
Chartered Physiotherapist

Registered member of the
Health Professional Council

Tel: (01362) Bawdeswell 688281

For assessment and treatment
at home or in treatment room

Jordans
Jordan Green
Whitwell
Norwich
NR10 4RQ



Lyn Walker DipCFHP MPSPract

Qualified foot health Practitioner

Treatment in the comfort of your own home

Nail cutting, removal corns, calluses,
in-growing toenails, fungal infection.

Tel 01328 700140 Mobile 07788440327

Open Every Day
Kerri's Farmhouse Pine
Quality Range of Gifts & Accessories
Hand waxed Furniture
Old Style Tea Shop
Reepham Station
01603 871187
Traffic Free Cycle Hire



Sing Your Heart Out

Sing Your Heart Out is an organisation that puts on singing workshops to improve mental wellbeing. Each summer we put on a big event for singers from all groups, and for people from the local community to come and enjoy themselves and find out about us.

Full details are on our website at <http://syho.org/BigSing.aspx>

Penny Holden : Chair of Sing Your Heart Out, 01362 688 754
3 The Street, Sparham, NR9 5AQ

Big Sing and Lunch

11:30am - 2:00pm on 18th August 2011
at Swanton Morley Village Hall

Anyone and everyone welcome, old friends, new ones,
people who love to sing, people who are just curious.
Come and have fun and make new friends.
Tea & coffee available from 11:00am.

If you can, bring some food to share for lunch. If you can't, come anyway there should be plenty.

[Swanton Morley Village Hall](#), Manns Lane, Swanton Morley, Dereham, NR20 4NP

BAWDESWELL FILM CLUB

The meeting on Sunday 14th August will be the last unless there is more interest. The club is open to all residents of Bawdeswell and surrounding villages.



No need to book, just turn up with a favourite DVD or two and we will choose one to view. There is a charge of £2 towards the hire of the hall. The Cafe/Bar will be open.

If you would like to join or help with this club or for further information please contact David on (01362) 688749.

Bawdeswell Garage & MOT Centre

MOT's Class IV & Class VII
MOT's for Motorcycles Class I & II
Repairs and Servicing for all makes and models of Vehicles
Recovery of Vehicles (24 hour)
State of the art Diagnostic Equipment
Fully Qualified Technicians
Friendly & Knowledgeable Staff - Quality Workmanship Assured
Health & HPI Check for Used Vehicles prior to purchase £50 + VAT

Mon - Fri : 8am - 6pm Sat : 8am - 12pm

**Park Farm Buildings Dereham Road
Bawdeswell**

Dereham NR20 4AA

Tel: 01362 688731 Fax : 01362 688943

www.bawdeswellgarage.co.uk



Aga & Rayburn Servicing
Gas, Oil & LPG Servicing
Breakdowns & Repairs
System Power Flushing
Landlord Certificates

Friendly Professional Service

01362 688999



m: 07507 850320

e: enquiries@bishopsheating.co.uk



Find out more on our website: www.bishopsheating.co.uk

Spanish for Beginners

This 8 week course is for anyone with little or no knowledge of Spanish. Over the 10 weeks you should cover: - introduction to language, greeting and introductions, where you are from and where you work, numbers, days and months, talking about family and others, ordering drinks and snacks, finding your way

Improve your Spanish

This 8 week course is for anyone who has already attended an introductory Spanish course and now wishes to learn to handle a wider range of situations. During the course you should cover: - revision, finding your way, shopping, booking accommodation, travel and transport, eating out.

| <u>Beginners</u> | <u>Improve your Spanish</u> |
|---|---|
| <u>Where</u> Reepham College | <u>Where</u> Reepham College |
| <u>When</u> Wed 21 st , 28 th Sept Wed 5 th , 12 th , 19 th Oct Wed 2 nd , 9 th , 16 th Nov | <u>When</u> Wed 21 st , 28 th Sept Wed 5 th , 12 th , 19 th Oct Wed 2 nd , 9 th , 16 th Nov |
| <u>Time</u> 7pm-8 30pm | <u>Time</u> 5 30pm-7pm |
| <u>Cost</u> £55 pp for 8 wk course £35 pp concessions if you in are receipt of State Pension or JSA for 8 wk course | <u>Cost</u> £55 pp for 8 wk course £35 pp concessions (if you are in receipt of State Pension or JSA) |

Digital Photography Course

This course is for complete beginners and those who are familiar with using their camera on automatic settings whether it is a compact or Digital SLR. It covers the composition and framing of pictures and shows you how to improve you pictures using simple techniques.

You will also gain some knowledge of the controls that are available on your camera, basic editing techniques such as cropping, adjusting exposure and preparing pictures for print or e mail. To get the best out of this part of the course you will need to be computer literate.

Please bring your camera with fully charged batteries, USB lead and a memory stick for all sessions

Where Reepham College

When Wed 21st, 28th Sept, Wed 5th, 12th, 19th Oct, Wed 2nd, 9th, 16th Nov

Time 6 15pm-8pm Cost £62 pp for 8 wk course, £32 pp for concessions.

To book a place on the course please contact Reepham Learning Community 01603 308133
Sandie Athow 07796698127

FOXLEY PARISH COUNCIL MINUTES OF MEETING HELD ON 14TH JULY AT 7.30PM IN THE VILLAGE HALL

Present: Councillors Harvey (Chairman) JH, Mears (Vice-Chairman) NM, Hatch NH, Barrett DB, Mansfield JM, Mr B Borrett (County Councillor) Mr G Bambridge (District Councillor)

Mrs E Buck (Clerk) and 3 Parishioners.

Apologies None

Resignation of Chairman

Nigel Hatch resigned as Chairman of the Parish Council.

Mr Barrett proposed Mr Harvey for Chairman which was seconded by Mr Mears.

Mr Harvey accepted the role as Chairman and thanked Nigel for taking on the role since the AGM.

The Chairman expressed that the council would like to see more Parishioners participating at these meetings, to become more involved with village matters. Also to find out what they would like to see in their Village.

Mr and Mrs Harvey expressed their delight about two youngsters who took it out of their own time to collect a donation from Parishioners of Foxley for the Children in the Horn of Africa. Douglas Buck and Georgia Sparrow raised £30.00 which was paid into the DEC fund. Well Done to you both.

Minutes of Meetings The minutes of the last Parish Council meeting held on the 12th May 2011 were agreed and signed.

Standing orders and Chairmanship These have been accepted as guidelines for the Parish Council.

Declarations of Interest None

Matters Arising not Covered Elsewhere on Agenda

Dog bins As no parishioners attended the meeting to voice their opinion on this matter, this item will be put on hold for the time being.

Highways

The Clerk has contacted Highways on a few items before the meeting. These items are:

Trees overhanging the entrance to Old Fakenham Road.

The road surface entering Old Fakenham Road- breaking up of the surface.

Potholes (The Street Moor Farm).

Private Sewerage Regulations

We are grateful to a parishioner who has brought this item to the attention of the Parish Council about Private Sewerage Regulations. All properties will need to register with the Environment Agency if they are not on the Main Sewerage. Registration is free at the moment and the deadline for this is 31st December 2011.

You can register your property by going online to www.environment-agency.gov.uk and it will inform you of the steps that you need to take, registration should only take 15 minutes of your time. Others can contact the Agency at 08708506506 for guidance on how to proceed.

Correspondence

The Summer Picnic and Sustainability Event

Following correspondence from NALC inviting Councillors to attend the Summer Picnic to be held on 27th July, at Fitzmaurice Pavilion, no Councillors wished to attend.

Finance

Summary of Accounts - The financial report for period 13th May to 13th July were agreed and signed.

Clerk's Expenses were agreed.

Approved Payments

The following payments were agreed.

Cheque no 100329 £250 Donation to Foxley Village Hall.

Cheque no 100330 £250 Donation to Foxley PCC.

Cheque no 100331 £120 The Reeve's Tale.

Cheque no 100332 £150.50 Bawdeswell Car Scheme.

Cheque no 100333 £41.87 Clerks Expenses.

Cheque no 100334 £100 Land Registry.

Donations 2011/2012

Donations for the coming year were discussed and it was decided that all amounts would remain the same.

Village Matters

A parishioner has raised concerns about a sign outside his property which is has been damaged on several occasions by tractors driving too close to the sign. They have tried on several occasions to fix the problems. Clerk to contact Highways.

District Councillor Bill Borrett explained the Kings Lynn incinerator proposals and answered questions.

Date of Next Parish Meeting

Thursday 6th October at 7.30pm.

Contact Details for the Parish Clerk - Emma Buck

Tel: 01362688299/07771654277

Email:foxleyemma@aol.com



Reepham and District Rotary Club

At our 22nd Charter Night we welcomed our new president. Peter Day has taken over from Terry Sutton as president for the coming year;

Gareth Homfray-Davies is our new vice president.

Members and guests enjoyed a dinner and entertainment at Stower Grange.

Peter has outlined plans for the coming year which includes maintaining our contacts with the local community and of course running the Art Tent at the Aylsham Show on August Bank Holiday which, this year will be even more exiting. Ken Walton has again donated a watercolour and this year Gill Savory has given an oil painting both of which we will raffle in aid of EACH and Rotary charities; tickets £1 each may be purchased from Rotary members. We are very grateful to both artists for such wonderful prizes.

Jef Wilson, Jeffrey.wilson@tesco.net

B B BUILDING SERVICES

*** All General House Repairs ***

- * Alterations * Extensions * Renovations * Restorations * Conversions *
- * Brick & Flint Work * Carpentry * Gutter Repairs & Replacement *
- * External Groundwork * Drainage & Pipe Work * Digger Work *

All Insurance Work Undertaken

- * Fully Insured * Free No Obligation Quote *

**For an outstanding service at a realistic price call Brian
01362 688531 or 07901 805595**

B B LANDSCAPING

- * Patios * Paving * Garden Walls * Brick Work * Steps * Brick Weave * Driveways *
- * Paths * Gates * Fencing * Decorative Ironwork * Raised Beds * Gravel Boards *
- * Lawns - Seed or Turf * Hedge & Tree Planting * Hedge & Tree Cutting & Clearance *
- * Garden Clearance * Drainage & Pipe Work * Mini Digger Work *
- * Redesign All Outdoor Areas *

- * Fully Insured * Free No Obligation Quote *

**For an outstanding service at a realistic price call Brian
01362 688531 or 07901 805595**

GP LANDSCAPING Norfolk

Making you look good from the outside!

**Fencing Specialists for all your domestic,
commercial and security needs.**

Using the best quality materials that last the longest!

Also undertaking all hard landscaping:

**Paths • Patios • Paving • Driveways • Turf • Brickwork
Decking • Garden Clearance • Ponds • Pergola's**

Locally based, fully insured, portfolio on request.
Free quotations, CSCS Holders (Health and Safety)



Tel Paul on: 07971 771204 Evening: 01362 688159

www.gplandscapingnorfolk.co.uk

It has been another busy month for Project Bawdeswell but the really exciting news is that the Planning Application for an extended Village Hall was agreed at the Parish Council Meeting on 4th July and delivered to Breckland on the 11th July! We have also received quotes from 4 architectural firms to finalise our draft plans and to take the project to the stage where building contractors will be in a position to quote for the job.

Our first need is for enough money to pay the chosen architect which, with a combination of grants and fund raising, we hope to have. We are applying for grants to the Design Council and to Breckland Council for this. But the big challenge after that will be to seek the large grants needed to get the hall built. To this end we hope to find someone to help us who has knowledge of large grant fund raising – if by any wonderful chance there is somebody out there that anyone of the readers of this magazine could put us in touch with please contact the Chairman of Project Bawdeswell, James Lilwall, on 688 499. There seem to have been rumours around the Village that the hall is about to close down for rebuilding. Please believe us that that is some time away yet, as a great deal of work has to be done to raise funds before any work can start and all users will have plenty of notice and an alternative venue suggested for the period our hall is unavailable.

On other fronts the Fete was a very successful day all round, John Mallen was the winner of the Treasure Hunt. The Business Plan is being prepared and we are looking at possible products to sell with profits going to the New Hall Fund. BAG is co-ordinating volunteers so that the hall is open every afternoon of the school holidays with activities on some days, this is a big commitment by volunteers for 2 people for 30 days. Ground Force has been re-instigated for the summer to keep the Children's Play area tidy and weeded. We pick up a lot of litter, but it would be so much better if it wasn't dropped in the first place! So please do all it takes to get that message across.

The Ploughing Demonstration Day on 3rd September is going to be a big event for Bawdeswell, details of it are elsewhere in this magazine. Other local fund raising events will continue to happen and there are lots of ideas in the pipeline. The buy a brick scheme is on-going and we are grateful to those people who have already bought bricks and to those who have made a commitment for regular donations. Recognition certificates are being prepared for those who have donated and of course we look forward to receiving more donations in the future.

Moor Farm Stable Cottages

Moor Farm, Foxley, Dereham, Norfolk, NR20 4QP

Tel: (01362) 688523 (24hr answerphone)
688393 (evenings)

*A Courtyard of 8
2/3 Bedroomed Converted Stables
together with Individual Cottages.*

All fully equipped and Centrally heated.

Long or Short Term Lets

OPEN ALL YEAR

Visit our Website: www.moorfarmstablecottages.co.uk

DAVIS EGG SALES

MOOR FARM, FOXLEY, DEREHAM, NORFOLK, NR20 4QN

Tel: (01362) 688523



Your Local Egg Supplier

Pre-packs - Keyes Trays
Shrink wrapped - Free Range



Christmas 2011

May I first thank you for the compliments and enthusiasm shown on our two recent outings to Cromer Pier and the Broads. Any profit made goes to the Bawdeswell New Hall Fund.

With December approaching far too fast as usual, it is therefore now time for me to put on my thinking cap to see what show I can arrange for this Christmas.

There are 4 options that may be available, and under headings A B C D I have listed the following with approximate costs for 70 persons.

| Venue | Date(s) | Transport | Meal | Approx Cost |
|-----------------------------|---|-----------|--------------|-------------|
| A Cromer Pier | Sat 17 th Dec | Coach | Fish & Chips | £29 |
| B Sheringham Little Theatre | 12 th -16 th Dec | Coach | Fish & Chips | £32 |
| C Theatre Royal Norwich | Wed 14 th Dec Thur 15 th Dec | Coach | Fish & Chips | £33 |
| D Thursford | 19 th – 22 nd Dec | Coach | No Meal | £40 |

If you are interested in taking part, please contact me either by phone on [01362] 688017 or by email to marilyn.collier@sky.com with subject Xmas 2011 and giving your preferences for the outings by listing ABCD in order of preference and showing a preferred date if you have one. Please also let me know if you have any comments, queries or alternative suggestions to make.

Alan Collier

GROUND FORCE

Play Area Garden Maintenance

1st Wednesday morning of each month at 9.30

3rd August, 7th September, 5th October

And 3rd Wednesday evening of each month at 6.00

20th July, 17th August, 31st September



Herbert Smith House,
Dereham Road
Honningham NR9 5AP



INVESTMENTS PENSIONS
PROTECTION MORTGAGES WILLS

For a **FREE Initial Consultation** call Andrew on
01603880222 or 07956567279

andrew@arwgroup.co.uk

www.arwgroup.co.uk

ARW Wealth Managers Limited is an appointed representative of IN Partnership the trading name of The On-Line Partnership Limited which is authorized and regulated by the Financial Services Authority.

BD FENCING & LANDSCAPING

All Types of Fencing/Gates & Landscaping

Public Liability Insured. Call for Free Estimates & Friendly Advice

TEL: 01362 683774 MOB: 07733216578

INDOOR HEATED SWIMMING POOL & SPA

MOOR FARM FOXLEY

Available for hire for your private use. Tel: 01362 688523



BAWDESWELL BOOK CLUB

At our July meeting we discussed two books read over the last two months. It would be difficult to have chosen two books so different in all ways, so absolutely no comparisons can be drawn between them.

The one we had been reading for the longest time and which was, not surprisingly the longest book at just under 900 pages, was A Place of Greater Safety by Hilary Mantel. This book is not for the faint hearted reader, but it is a very interesting and informative read. The subject is the French Revolution and Ms. Mantel has certainly done a tremendous amount of research to tell this very bloody story. I think we all had just the merest knowledge of the French Revolution before reading the book, the extent of what we knew was – that lots of people were guillotined and Marie Antoinette advocated the people “eat cake”! Mantel has stated that she is “fascinated by people who have a tremendous force of will”, Thos. Cromwell, of whom she wrote in her Booker winning novel, Wolf Hall, was such a character as are the 3 main characters of this book who were early and long lasting members of the movement to ensure political change in France. She is interested in how change comes about and how it changes the people that instigate it and how in the end the event itself takes over. The three main characters of this novel Camille Desmoulins, Danton and Robespierre came to the same end as so many that had gone before them, and in some cases had been sent to the guillotine by them. Those of us who managed to soldier on to the end of the book felt it would be interesting to learn more about this period of French history.

The same could not be said for The Fry Chronicles, by Stephen Fry. It was certainly light relief, was well written and informative about life for the young and bright people like him who went to Cambridge, but we don't feel the need to read more, it was enough. It is a very anecdotal read, almost like a lot of magazine articles strung together. One got the impression sometimes that he was out to shock those who weren't part of the theatrical “in crowd”. One of our members pointed out that it did give a history of British comedy over the last decades and the changes from musical hall, situation comedy to the favoured stand-up comedy of today, which was informative. Unfortunately and sadly for him, Fry does suffer with being bi-polar but I felt that the excuses he makes for himself in this book do not stack up against the successful life he is leading, whereas in the documentary TV programme he made some years ago he made a very good case for the tremendous debilitating effects of mental health illness.

The Book Club meets in the Workhouse Bar on the first Thursday of every month at 7.30 pm. We mostly obtain books from the Library so there is not the expense of buying new books each month. We are reading The Go Between, by L.P. Hartley for discussion at our next meeting on 4th August. New members are always welcome. Enquiries: Marietta Menzies 01362 688 400.



www.orangefoxelectrical.co.uk

**Complete Installation and Maintenance Services
for Retail, Commercial and Domestic Customers**

01362 688997 01603 743373

24 Hour Emergency Call Out




SEAN KNOWLES BUILDER

All types of Brick & Flint work, Extensions, Renovations, Repairs, Garden walls, Paths, Patios, Fencing, Brick weave and Concrete driveways.

Insurance work undertaken.
Fully Qualified and Insured
Est. 10years



07818 294282
01362 688718
01603 871596
2 Dereham Rd
Bawdeswell

Wensum Valley Birdwatching Society



Nightjar evening: Starting from the newly renovated Marsham Arms the group assembled at Marsham Heath in search of this enigmatic bird. The secret of Nightjar watching is for the group to be as quiet and unobtrusive as possible, not always easy with a large group but this year serenity was achieved and several birds made an appearance. The fact that we had a quiet group and our vivacious club secretary Lin, did not attend this year, are entirely co-incidental.

Going farther afield, a small group of intrepid members visited the Hebridean islands of Mull and Iona where they saw the majestic White tailed Eagle, also a Golden Eagle and a distant view of a Golden Eagle chick peeping over the side of the nest. Other highlights were Puffins and a Corncrake. Well over a hundred species were recorded.

Sennowe Park: Members assembled at the Raptor Watchpoint at Great Ryburgh for a visit to this stately Edwardian home and were welcomed by the owner Tom Cook. Then, in the capable hands of ace birder, artist, and wvbs member Steve Cale, this picturesque estate of lakes and woods was explored. A very distant Kingfisher and a Little Ringed Plover were spotted by eagle-eyed members and a quick I.D. course by Steve helped identify a Mediterranean as it Gull flew from one of the lakes. Many thanks to Tom Cook for making us welcome and to Steve for leading an enjoyable afternoon. A total of 60 species were seen including Kestrel, Buzzard, Sparrowhawk, Little Egret, Avocet, Hobby, Blackcap, Goldcrest and Reed Warbler.

Rutland Birdfair: Many of our members will be visiting the British Birdwatching Fair at the Egleton Nature Reserve in Rutland on the 19th to 21st of August. One of the biggest wildlife events in the UK which attracts over 20,000 visitors. Lots to do and see for all interests and age groups – well worth a visit.

Dates for September: On Thursday 15th our first Autumn talk is by Professor Fred Cooke, 'A thousand years of birdwatching in the Castle Rising area'. Starts at 7.30 p.m. at Weston Longville Village Hall. On the 25th we visit Breydon Water and Berney Marshes. Non-members are welcome at both these events.

Colin Wright [010603 – 740548] www.wvbs.co.uk

For all your Home & Garden Maintenance contact

J. D. Home & Garden Services

Professional & Reliable Workmanship

- ❖ Garden Fencing Supplied & Erected
 - ❖ Patio & Paving Laid
 - ❖ Sheds Supplied & Erected
- ❖ Replacement External Doors & Windows
- ❖ Conservatories Supplied & Erected
 - ❖ Floor and Wall Tiling
- ❖ All forms of Domestic Carpentry

No Job Too Small - Free Estimates
Call Jason Dobbs on 01362 - 688824 or
07780 - 988628

www.jdhomeandgarden.com



Rose Cottage Therapies

Clinic suite in tranquil setting

**Reflexology * Reiki
Aromatherapy * Massage
Rosetone Facial Massage
(the natural facelift)**

**Registered Practitioner
14 yrs experience**

Specialising in:-

**Depression
Menopause
Stress
Skincare**

**Also:-
Teaching Reiki
Master
Meditation Days
Handmade Skincare
Range
Free Skincare Advice
Gift Vouchers
Gift Packs**

Sue Whiting MAR, IEB, RASA, CThA
Tel: 01362 688664



Louise Ledbury

State Registered **Senior Hairstylist**

Working from my home
2 Saxon Meadows
Bawdeswell NR20 4UX

Tuesdays & Thursdays
9am to 5pm

For a appointment please call
Louise on 01362688666
Ladies please call now!
For 20% off your first visit.



Remind your
body how it should feel

- Aromatherapy
- Massage
- Hot Stone Therapy
- Indian Head Massage

To book an appointment at
Dragonfly Therapy Room OR in
the comfort of your own home call

**Bawdeswell (01362) 688746
Mobile 07786 628309**

Carmen Taylor CThA
Holistic Massage
Therapist

Helen Mears MCFHP MAFHP

Qualified Foot Health

Practitioner

Phone **01362 688251**

Registered member of the
British Association of Foot Health
Professionals
Professional foot care treatment

and
pain relief for a range of
common foot disorders



Old Hall Farm Barn
The Street, Foxley



**The NORFOLK
CHURCHES TRUST**

**SPONSORED
BIKE RIDE**



Supported by **Eastern Daily Press**

**How to have fun
and raise money for your
favourite Church or Chapel**

join the

**SPONSORED CYCLE RIDE
Saturday 10th September 2011
9.00 am - 5.00 pm**

Cycle or walk around Norfolk Churches to raise money for the Church or Chapel of your choice and for the NORFOLK CHURCHES TRUST.

Sponsorship money raised will be equally shared between Norfolk Churches Trust and the Church or Chapel of any denomination chosen by the cyclist, walker, or church recorder.

SPONSORSHIP FORMS IN BAWDESWELL CHURCH PORCH,
OR FROM MONICA HATCH 688316.

Registered Charity Number: 271176

Printed by Bungay Printers, Suffolk

**PACKER
PLUMBING**
07748 242 985
keith.packer@phonecoop.coop

Domestic plumbing services

All repairs and renewals.
Anglian Water Approved.



Charles Seaman
Interior/Exterior Painter and
Decorator
Tel: (01362) 688309
2 Bell Close, Bawdeswell,
Dereham, NR20 4SL

L **Vaughan Lapwood ADI**
*Patient and Friendly
Driving Tuition*
Tel: 01362 690049
Mobile 07831 102311

philip jacobs
Oil Fired Boiler Servicing
Repair & Breakdowns.
Friendly reliable local service
01362 688398
mobile **07887 902815**
NiC C & G EMC

**Locally based accountancy and
tax service**
CERTAX ACCOUNTING
Self-Assessment Tax Returns
Annual Accounts
Book Keeping
VAT Returns

Committed to providing a prompt professional service at a sensible price. For a free initial consultation at a time to suit you contact
David Pooley ACIB
Tel/Fax **01603 866542** Mobile **0790 508 6960**
e-mail: davidpooley@certax.co.uk

**ABILITY
DRIVER TRAINING**
YOUR LOCAL DRIVING INSTRUCTOR

EXCELLENT PASS RATE
LYNG (01603) 870276
www.abilitydrivertraining.co.uk

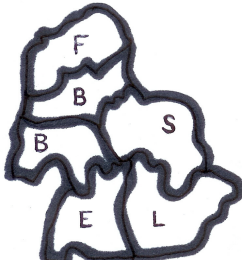
TELEPHONE BAWDESWELL 688211

J.A.BAKER
FAMILY BUTCHER
BAWDESWELL, Norfolk

ORDERS TAKEN FOR ALL DEEP-FREEZE MEATS

 Lilwall's Farm Pork
HOG ROASTS
for your function
50 - 500 people
Ring for a quotation
(01362) 688098 07867 987787
Farm Reared British Pigs

Benefice News and Events



Everyone learning

There are no courses in August but September is a full month. Here are a few of the events on offer. For more full details please see the Everyone Learning leaflets which are available in each of the churches.

10th A morning with Mark 10-12.30 in the Norwich Cathedral Library. Contact: gwarren@cathedral.org.uk

17th Epiphany in Patchwork and Quilting Bowerbank Room at the Hostry 10am -4pm

Contact as above. Cost £20.

20th Knowing Jesus. An eight week course working online at your convenience.

Contact: caspar.james@norwich.anglican.org.

24th Messy Cathedral. A family day of activities and worship with a harvest theme.

Cost £4 adults, £2.50 children, under 3 free. Contact:

liz.dawes@norwich.anglican.org.

Events for August and September

August

1st-5th Summer Club Sparham Church – see full page advertisement for details

6-13 Churches Open Week

13th History Beneath your Feet in Foxley at Foxley Village Hall 730 pm

21st Annual BBQ at Lyng Rectory 12.30pm

September

10th Elsing village open day and Hall gardens

16th Jazz candlelit cabaret Sparham 7.30pm

Church cycle ride

The organiser for Foxley is Monica Hatch 01362 688316. Please contact her if you would like a sponsor form.

In Bawdeswell, the forms are in the church porch.

RAVENCROFT TREE SERVICES



TREE CONTRACTING AND
CONSULTANCY

Contact Richard Ravencroft BSc.(Hons)

Arb.

Tel: 01362 684291

www.ravencrofttrees.co.uk

Country Boys Gardens - General Maintenance

Pest Control wasps, moles, rats, mice and rabbits

Paddocks & Pasture Maintenance

Topping, Chain Harrowing, Rolling, Fertilising, and Muck heaps cleared away.

All Hedging work undertaken by hand or Tractor

Lawn Care grass cutting one off or regular. Moss, feed and weed treatment.

Fencing post and rail, stock.

Tel Dave: Mobile 07860 696340 Office 01603 818848

Free Estimate www.countryboysgardens.co.uk Fully Insured



REEPHAM HOME HARDWARE

3 TOWNSEND CORNER, REEPHAM, NORWICH
Tel. 01603 871064

Paint Tinting Mixing System • CALOR GAS Stockists • Hardware
Full Gardening Range • Pet Food • Timber • Electrical • Tools
Shingle • Cycle Parts • Houseware

Mon - Sat 9 - 5 DEEP CLEAN CARPET CLEANER FOR HIRE LOCAL DELIVERIES Sun 10 - 12.30





ADC

Plumbing & Heating

From dripping taps to full installations

Oil Boiler Servicing & Repairs

Tel: 01362 688083

Mobile: 07917 678546

Email: andychristie430@btinternet.com

34 Norwich Road

Bawdeswell

Dereham, Norfolk

NR20 4RZ

THE REEVE'S TALE

01362 688268

www.thereevestale.co.uk

Email:

magazine@bawdeswell.net

Open Church Week 2011 6 - 13 August 2011

We all plan to be open:

Foxley St. Thomas

St Margaret's Church, Lyng

St Mary's Church, Elsing

All Saint's Church, Bawdeswell

St Mary's Church, Bylaugh

St Mary the Virgin, Sparham

Also on Saturday 10th September - The day of the annual Sponsored Cycle Ride

Police are urging cycle owners to secure and lock their bikes following a spate of thefts.

In the last two weeks, six pedal cycles were stolen in the Dereham neighbourhood. One cycle has been recovered.

To deter thieves, cyclists are advised when out and about to:

- Change where you leave your bike locked on a regular basis, so it won't be noticed and stolen to order
- Always lock your cycle, even if you're only leaving it for a moment
- Lock your bike through the frame and secure removable parts
- Make the lock or chain hard to manoeuvre when parked
- Face the lock towards the ground to make it difficult to pick

At home:

- Keep your bike out of public view
- Keep it in a shed, garage or inside the home
- Secure it to an immovable object for added security



Foxley St. Thomas

We have decided to join in the Diocesan Open Churches Week (6th - 13th August) and a Rota of " Welcomers" will be on duty each day from 10-00 am until 5-00 pm. We intend to organize some little exhibits about our church and its history, including Tony' restoration project, the King James Bible, our wonderful kneelers, plus a plants/produce/ jam stall with arrangements of flowers from our gardens all about. Churches will be open far and wide across the county; a chance to learn about Norfolk's unsurpassed heritage of church buildings, community life, and indeed, Christianity.

To demonstrate that we are not just a self - interested little rural community, the P.C.C, decided that, at the Benefice Service for our 6 parishes on Sunday 10th. July, the entire Collection would be donated to help the desperate people in East Africa. John Harvey our Treasurer has sent off £277 -58 to the Disaster Emergency Committee, grossed up to include the amount Gift -Aided We were also astonished and delighted to hear that 2 of our local children, Douglas Buck and Georgia Sparrow, had, on their own initiative, knocked on doors all around the village and collected £30. Well done! What an example and inspiration to us all.

Diana Harvey
PCC Secretary

We managed to complete the chancel heating, so the winter should be a little warmer for worship. It's aim was to make the chancel a better place to worship for the congregation. A local company, OrangeFox Electrical did a splendid job for us for which we are very appreciative. However, now we are on for the next job- the bells. Foxley has 6 bells, cast in Norwich in the 1750's and they need a lot of TLC. Some of us have started bellringing as well. English Heritage grants are not looking hopeful, but any contributions to the bell fund would be gratefully received as we need to raise some £30000. We are also looking to replace the pinnacles on the church tower, as well as patch as best we can the interior decoration of this ancient church. To start to raise some funds we have arranged an interactive talk on 'History beneath your feet' at Foxley Village Hall on Saturday August 13th at 730pm to include a glass of wine and savouries. I hope you will support us as well as being entertained.

Tony Rushbrook
Churchwarden

From the Rector

Dear Everybody, hello again,

Two very different stories are in the news, but they have common ground. The first is the question of how we pay for the care of the elderly. The second is the starving children in the Horn of Africa.

People have said to me: “Why do they have so many children if they can’t feed them?” The answer usually lies in the social security system. For people with no safety-net, it is the next generation who will look after them. Their old age should be cared for by their children.

The fifth of the Ten Commandments states: “Honour your father and your mother *that your days may be long in the land which the Lord God is giving you.*” In other words, if your children learn the care of the elderly from how you behave, you will be looked after in your own old age. This is vital in societies where the family is the principal source of care, but is a good value for all societies.

Our social security system in this country is supposed to smooth the shocks of life. It can’t take them away altogether, but it’s so much better than two hundred years ago, when the result of a parent having a lingering illness was often that the whole family, children included, went to the workhouse. An elderly relative needing care would be looked after at home as the family and finances could manage.

Who pays for long term care is a lottery. Some of us will need it, some won’t. The state currently intends that long term care should impoverish no one, even if what is provided may seem inadequate.

Some people avoid spending money on themselves so as to leave it to their children, and can resent their assets being used to pay for care. It’s enough of a vote-winner for the government to intend to change the law. In societies with less state provision, children might feel it was their duty to pay however much it cost. And the elderly need to remember that they have already given their children the greatest gift, life. But whatever legislation we get, it won’t be equal for everybody.

God bless you, and all generations in your family.

David Head

The F.L.E.B.B.S Benefice

Rector: The Revd David Head Tel: 01603 872381

Email: david@davidhead.plus.com

August Services

| Date | 07/08 | 14/08 | 21/08 | 28/08 |
|------------|---|---|--|--|
| Season | 7 th Sunday after Trinity | 8 th Sunday after Trinity | 9 th Sunday after Trinity | 10 th Sunday after Trinity |
| Foxley | 18.30 EP DH | | 8.00 HC PB DH | 10.30 HC1 DH |
| Lyng | 9.00 HC2 DH | 10.30 OMS DH | 17.00 EP DH | 10.30 FS FST |
| Elsing | 10.30 HC1 Bishop Tony | | 9.00 HC1 DH | 10.30 W&P CW |
| Bawdeswell | 10.30 HC1 DH | | 10.30 GiG GiG team | 10.30 W&P CW |
| Bylaugh | | 9.00 HC PB DH | | 9.00 MP CW |
| Sparham | 10.30 OASIS | | 10.30 HC PB DH | 9.00 HC DH |

Holy Communion every Thursday morning at Lyng at 9.30am
Evening Prayer every Thursday evening in Bawdeswell church at 6pm

FOR SEPTEMBER SERVICES
Please see church notice boards
or visit www.bawdeswell.net/beneficiary