

The Reeve's Tale Magazine

News | Events | Local Services

December '16
& January '17

FREE



Bawdeswell & Foxley

www.thereevestale.co.uk

Winter Programme

Saturday 10th December – 7.30 pm start

Love & Friendship

Set in the 1790s, Love and Friendship centers on beautiful widow Lady Susan Vernon, who has come to the estate of her in-laws to wait out colorful rumors about her dalliances circulating through polite society. Whilst there, she decides to secure a husband for herself and her rather reluctant debutante daughter, Frederica. Based on Jane Austen's comic gem.

With ... Kate Beckinsale, Stephen Fry, Chloë Sevigny, Xavier Samuel

Saturday 14th January – 7.30 pm start

I, Daniel Blake*

A middle-aged carpenter who requires state welfare after injuring himself, joins forces with a single mother in a similar scenario.

Directed by Ken Loach and starring Dave Johns and Hayley Squires.

Saturday 11th February – 7.30 pm start

Bridget Jones Baby*

Bridget's focus on single life is interrupted when she finds herself pregnant, and unsure of the identity of her baby's father. **Starring Renee Zellweger and Colin Firth.**

Saturday 25th February – 7.30 pm start

Cinema Quiz Night

Either make up your own team of up to 6 or join up with others at the hall.

This is a light hearted fun Quiz with rounds on Films, Film Music, TV, Norfolk & General Knowledge as well as a Picture Quiz. Raffle 1st prize is a season ticket for the 2017/18 season [April to March]

Prize for winning team is 6 tickets to any of our future films and 6 bottles of wine

Saturday 11th March – 7.30 pm start

The Girl On The Train*

Saturday 8th April – 7.30 pm start

A Streetcat Named Bob*

* Subject to confirmation - please check website or email us in December

Film Dates for rest of 2017 are Saturdays 13th May, 10th June, 8th July, 12th August, 9th September, 14th October, 11th November, 9th December.

Doors and Bar/Cafe Open 6.30pm – Films Start at 7.30pm

Normal Prices : Adults £4.50, Over 60 £4, Under 18 £2.50, Family (2A+2C) £12 + £1.50 each extra child

Tickets at Reception

You can find us at www.bawdeswellvillagehall.co.uk

Tel: 01362 688749 or email: BawdeswellVillageCinema@gmail.com

You can also email us and ask to be put on our distribution list which will give you the opportunity to help choose our next film program.



Welcome

The final issue for 2016...

...which means it's high time for us to say a few thank yous!

Firstly, thank you to everyone who has contributed content for the magazine throughout the year. We're grateful for every contribution we receive to help keep the magazine fresh and (we hope!) interesting. There are several people who work their socks off every month to get pages of updates and information to us on a regular basis. So thank you for hitting the deadlines each month!

Secondly, thank you to all of our advertisers and those who have contributed donations this year. It's your support that makes this all possible.

Thirdly, a massive thank you to the team of volunteers who deliver the magazine each month and make sure it reaches letterboxes. You really are the unsung heroes and we are ever grateful.

Finally, thank you to anyone who's reading this! Without people actually taking the time to flick through the magazine, it would all be for nothing!

Wishing you all a wonderful Christmas and all the best for 2017!

Emma and Gavin

Next copy deadline

15th January 2017

Please email

hello@thereevestale.co.uk

Advertising in The Reeve's Tale

If you would like to advertise your business within The Reeve's Tale, please contact us via email hello@thereevestale.co.uk or visit www.thereevestale.co.uk for 2017 advertising rates.

Send your stories, letters and ideas to hello@thereevestale.co.uk or call us on 01362 688183.

Front image:

Thanks to Ryan Newton - Ryan Newton Photography.

ALL SAINTS BAWDESWELL

this Christmas

Christmas Wreath Fair

Crafts & Seasonal Produce Stalls

Saturday 10th December

10am – 2pm

Refreshments Available

Pre-orders for wreaths, flower decorations & Christmas cakes can be made with Sue Lilwall 01362 688240

Pre-orders Available

Advertising Rates

2017 Magazine advertising rates

We're pleased to be able to offer the same advertising rates for the upcoming year. If you'd like to advertise in 2017, please contact us hello@therevestale.co.uk or call 01362 688183.

We are also able to offer a bespoke advert design service. Contact us for more information.

Advert Size	Dimensions	Cost per issue
Full Page	148mm x 210mm	£17
Half Page	124mm x 91.5mm	£10
Quarter Page	124mm x 44.25mm	£8
Eighth Page	60.5mm x 44.25mm	£6



QUALITY FABRIC EXHIBITION STANDS

Banners | Table Coverings | Pull-up Banners
Exhibition Stands | Flags | Barrier Covers

SHOP ONLINE
inkonfabric.co.uk

Tel: 01362 688183
Email: hello@inkonfabric.co.uk
Find us on 



Bawdeswell Garage & MOT Centre

Repairs and servicing for all makes and models of vehicles

MOTs Class IV & Class VII

MOTs for Motorcycles Class I & II

Recovery of Vehicles (24 hour)

State of the art Diagnostic Equipment

Fully Qualified Technicians

Friendly & Knowledgeable Staff - Quality Workmanship Assured

NEW: COURTESY CARS AVAILABLE – small charge

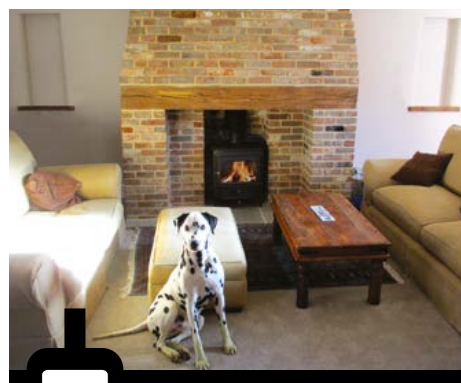
Mon - Fri: 8am - 6pm

Sat: 8am - 12pm

Tel: 01362 688731

www.bawdeswellgarage.co.uk

Park Farm Buildings, Dereham Road, Bawdeswell
Dereham, NR20 4AA



**SUPPLY & INSTALLATION
OF WOODBURNERS**

Norfolk's agent for Aga, Hunter & Parkray Stoves



01328 700161

www.norfolkwoodburners.co.uk

G. A. Egmore & Partners of Sparham

Coal, Smokeless fuels,
Pre-packed & Barbecue fuels,
Logs & Kindling and parts for
Solid Fuel Fires



Regular deliveries
Quality, Service, Reliability.

Tel: 01362 688270

Charles Seaman

Interior/Exterior Painter and
Decorator

Tel: (01362) 688309

2 Bell Close, Bawdeswell
Dereham, NR20 4SL

Contents

What's on?	9
December and January Events	9
Regular Events	11
Letters	13
A fond farewell to William and Karin Mason	13
A final word on...	13
Village News	15
Bawdeswell Village Hall	23
Clubs and Societies	25
Book Club	25
Bawdeswell Ladies' Craft Club	27
Bridge Club	27
Foxley Village Hall Coffee Morning	27
Bawdeswell Bowls Club	29
Short Mat Bowls	29
Flower arranging	29
The Friends of Bawdeswell School	31
Beck WI	31
Wensum Valley Birdwatching Society	31
Fifty and Beyond (FAB)	33
Little Monkeys Parent and Toddler Group	33
Bawdeswell Table Tennis Club	33
Services	35
Community Car Scheme: Bawdeswell, Bylaugh, Foxley	35
Post Office	35
Parish Councils	37
Bawdeswell Parish Council Meeting 7th November 2016	37
Foxley Parish Council Meeting 13th October 2016	41
Church News	45
The Friends of Bawdeswell Church	45
Local church news	47
Letter from Sally	51
Church Services	53

DA PLUMBING SERVICES

45 Fairfields, Cawston, Norwich, NR10 4AS

Local reliable plumber

Qualified and fully insured - All work guaranteed

All plumbing work undertaken - Free estimates

Central Heating Power Flushing

Blocked drains

Oftec Registered Technician - 24 Hour call out

**Oil boiler due for a service,
broken down or needs replacing**

Call David on 01603 871202 / 07771602218



Many Hands

Gardening
DIY
Downsizing

IT help
Sewing 1 to 1
Admin. Support

**For help at home or business, no matter how small
on weekdays, evenings or weekends.**

For more information contact Alex Kirby (Mrs)

Mobile - 07340 817890 - telephone - 01362 688787

alex@manyhandsnorfolk.co.uk - www.manyhandsnorfolk.co.uk



Aleathia Mann Ltd • Chartered Accountants

**Townsend Court, Reepham
Church Lane, Sparham**

01603 871092

01362 688543

**Need help with your Accounts, Tax returns, Book-keeping,
VAT or Payroll? Local, personal help, professional & competitive**

What's on?

December and January Events

Event	Date	Location(s)
FAB Christmas Buffet	Thurs 1st Dec	Bawdeswell Village Hall; 12.30pm
Book Club	Thurs 1st Dec	The Old Workhouse; 8.00pm
Bingo	Sat 3rd Dec	Foxley Village Hall; 7.00pm
Bawdeswell Parish Council	Mon 5th Dec	Bawdeswell Village Hall; 7.30pm
Walking Group	Tues 6th Dec	Foxley Village Hall; 10.00am
Flower Arranging Wreath Day	Thurs 8th Dec	Bawdeswell Village Hall; 10.30am
Wreath Sales	Sat 10th Dec	Bawdeswell Church; 10.00am
Bawdeswell Village Cinema	Sat 10th Dec	Bawdeswell Village Hall; 7.00pm
Iceni Choir Christmas Concert	Sun 11th Dec	Bawdeswell Village Hall; 4.00pm
Flower Arranging	Tues 13th Dec	Bawdeswell Village Hall; 2.00pm
FOBS	Tues 13th Dec	Bawdeswell Village Hall; 6.00pm
Foxley Carol Service	Sun 18th Dec	Foxley Church; 4.00pm
Bawdeswell Carol Service	Sun 18th Dec	Bawdeswell Church; 4.00pm
Foxley Coffee Morning	Wed 21st Dec	Foxley Village Hall; 10.30am
Walking Group	Tues 3rd Jan	Foxley Village Hall; 10.00am
Book Club	Thurs 5th Jan	The Old Workhouse; 8.00pm
FOBS	Tues 10th Jan	Bawdeswell Village Hall; 6.00pm
Ladies' Craft Club	Thurs 12th Jan	Bawdeswell Village Hall; 2.00pm
Foxley Parish Council	Thurs 12th Jan	Foxley Village Hall; 7.30pm
Bawdeswell Village Cinema	Sat 14th Jan	Bawdeswell Village Hall; 7.00pm
Foxley Coffee Morning	Wed 18th Jan	Foxley Village Hall; 10.30am
FOBC 100 Club Thank You	Sat 21st Jan	Bawdeswell Village Hall; 7.00pm
Ladies' Craft Club	Thurs 26th Jan	Bawdeswell Village Hall; 2.00pm

EVENTS COMING UP AT

SANTA'S GROTTO

Visit our magical Santa's Grotto from **Saturday 26th November**. Please pick up a flyer instore or visit our website for full opening hours.



Meet Santa's Reindeer
Sunday 4th December
from 10:30am – 4:30pm

Charity Weekend

Saturday 26th and Sunday 27th November

Proceeds to the RNLI and East Anglian Air Ambulance with representatives from both charities. Mulled wine and mince pies and the sound of the Aylsham brass band.



The Reeve's
Larder
FOOD HALL

Millennium
Garden

BLUEBELL
SQUARE
Indoor Shopping Centre

Reeve's
Parlour
Restaurant

Treetops
Adventure
PLAY AREA

Norwich Road, Bawdeswell,
Dereham, Norfolk NR20 4RZ
Tel. 01362 688 387



www.bawdeswellgardencentre.co.uk ... where friends meet



From roots to shoots....

Ravencroft Tree Services

Consultants & Contractors

T: 01362 684291

www.ravencrofttrees.co.uk

Richard Ravencroft BSc(Hons)Arb. MICFor. Est. 1992



What's on?

Regular Events

Event	Time/Date	Location
Slimming World	Mon. 5.00pm	Bawdeswell Village Hall
Pilates	Mon. 6.15pm and 7.15pm	Bawdeswell Village Hall
Table Tennis	Mon. 7.30pm	Bawdeswell Village Hall
Beck WI	2nd Mon. of each month 7.30pm	Old Schoolroom, Sparham
Short Mat bowls	Mon. 7pm - 9pm & Fri 7pm - 9pm	Foxley Village Hall
Hub Cafe	Tues. 9.30am - 12pm	Bawdeswell Village Hall
Dog Training	Tues. 7.00pm (from 18th)	Bawdeswell Village Hall
Bridge	Tues. 7.15pm, Friday 2.00pm	Tues: Foxley Village Hall, Friday: Bawdeswell VH
Yoga	Wed. 1.30pm (from 12th)	Bawdeswell Village Hall
Countrysiders	Wed. 7.00pm alternate weeks	Bawdeswell Village Hall
Table Tennis	Wed. evening	Foxley Village Hall
Kettlebells with Lucy	Thurs. 6.30pm	Bawdeswell Village Hall
Little Monkeys	Fri. (term time) 9.30 - 11.30am	Bawdeswell Village Hall
Fitness Class with Val	Sat. 9.30am - 10.30am Thurs. 10am - 11am	Foxley Village Hall Foxley Village Hall
Games Afternoon	Sat. 1.00pm	Bawdeswell Village Hall



MARKETING MADE SIMPLE

Now there's a bright idea...

examplemarketing.co.uk
hello@examplemarketing.co.uk
01362 688183 | 07736 030195

example
marketing &
web design

G.P. Landscaping & Building Maintenance

Fencing specialists for all your domestic, commercial and security needs

Using the best quality materials that last the longest!

Also undertaking all hard landscaping:

**Paths | Patios | Paving | Driveways | Turf
Brickwork Decking | Garden Clearance | Ponds | Pergolas**

Local | Fully Insured | Portfolio on request
Free quotations | CSCS holders (Health & Safety)

Call Paul: **07971 771204** Evening: **01362 688159**
www.gplandscapingnorfolk.co.uk

Letters

A fond farewell to William and Karin Mason

Many Friends gathered together on the evening of Friday 21st October at the Village Hall to say a 'big' thank you and fond farewell to William and Karin Mason who are leaving Bawdeswell to start a new life in Barbados.

Both have given so much to the village since their arrival in the life of the school, church, Icení Choir, Parish Council and Village Hall that many of us wanted to show our appreciation.

Bill gave an amusing and moving speech on our behalf before the assembled friends presented them with a watercolour of the church, specially commissioned from the Sheringham based artist Peter Strudwick and paid for by donations to mark the occasion.

We all wish them well, good health and happiness in their new home and life together in Barbados, we'll miss you!



A final word on...

Dog fouling. I have dogs myself and always pick up after them. However, if you do see someone letting their dogs foul in the village, might I recommend that you try and take a photo of them and report the incident officially? It's then a recordable, fineable offence and can be offered as evidence.

Anon



Bawdeswell Pre-School

FULL AND PART TIME PLACES AVAILABLE

For 2-5 years | Open 8am - 6pm

Flexible Sessions | Healthy Nutritious Snack
Exciting and Fun Activities | Fully Trained Staff
Safeguarding Specialists | Parking available
Pastoral Care and Parent Support onsite

Sensory Area | 2 Year Funded Places | Flexible Sessions
Bank Hour Vacancies also available

01362 686891

www.scribblesdaynurserygreatyarmouth.co.uk

Village News

St. Thomas Foxley

On Sunday 18th December at 4pm, we will be holding our Carol Service in Foxley Church. This will be a traditional service of Lessons and Carols, followed by mulled wine and mince pies. The church will be decorated, as always at Christmas time, with flowers and a Christmas tree. We look forward to welcoming many of you then, from the village and elsewhere.

On Christmas Day Sunday 25th December at 10.30am, we will be having a Service of Holy Communion (Common Worship) here in Foxley, celebrated by The Ven. John Ashe, Archdeacon of Lynn.

Please join us to celebrate Christmas this year, at either or both of these Services. You will be very welcome.

Anon

Foxley Litter Pick 5th November 2016

With a feeling of déjà vu, 18 volunteers met on a very wet and windy morning to collect litter in Foxley. After an hour, they had collected an impressive amount of litter; 14 large bags, wood, a bucket of bottles and old car tyres; most of it from the three lay-bys in Foxley. I am pleased to say that although there was litter to be collected from the roadside - there was less than in July!

We all agreed, the best bit was the coffee and cake afterwards! My thanks to all who took part with such good humour on a miserable day and to Catherine from Breckland Council who arranged for the loan of the equipment and the efficient collection of the bags of litter.

Litter pickers: Ruth, Nicky, Gillian, Richard, Mark, Jo, Linda, Hugh, John, Liz, Emily, Anne Leanne, Bryan, Bonnie, Izzie and Dan

Cake makers: Ruth, Linda, Liz and Izzie

Tea and Coffee provider: Mary

Breckland & Waveney Foot Health Clinic

Ruth Walters MCFHP MAFHP

A mobile practice for private patients & businesses

I am a registered Foot Health Practitioner and offer a visiting service to private patients within a 10 mile radius of Dereham. I also hold a weekend clinic at "Advanced Skincare", 23 St Nicholas Street, Diss.

Treatments:

Diabetic foot care | Painful corns | Hard skin (callus) | Verrucas/warts
Nail thickening | Nail trimming (including hands) | Fungal nail/skin infections
(including hands) | Ingrowing toenails | Basic orthotics

I offer a friendly, flexible, professional and caring service to each of my patients.

For a discussion and appointment bookings.

Tel: 07595 177 910 / 01362 693 912

Web: bwfhc.co.uk

Email: brecklandfoothealth@gmail.com

Find us on 





Little Monkeys



Parent & toddler group

Bawdeswell Village Hall

Friday mornings (term time)

9.15 - 11.30am

Toys • Crafts • Snacks • Teas • Chats



A friendly local parent-run group for
0-4 year olds and their carers

Only £2 for you & your monkey; 50p each additional monkey

For more information
call Kate (01362) 688911
or Anne (01362) 688447



Village News

Foxley Bus Stop Survey

There has been considerable discussion amongst residents about the placement of the bus stops in Foxley and the state and location of the bus shelter. There is little point updating the bus shelter until the bus stop issue has been resolved. It is intended that once the position of the bus stops has been decided, new bus stop signs and poles will be erected. I have contacted Norfolk Highways and Stagecoach and now I need to know the opinion of the residents of Foxley and users of the bus about where the bus stops should be. I have delivered a questionnaire to all houses in Foxley asking for your opinion – please respond it is your chance to say where you would like the stop to be.

The possible choices are:

On the A1067 going to Fakenham (the west side of Foxley)

The present site near the war memorial site is on a left-hand bend, making it dangerous for residents to cross the busy road and for traffic trying to overtake the stationary bus. The alternative site at the Chapel Road crossing. This is in the centre of the village and gives a much better view of the road for both vehicles overtaking a stationary bus and pedestrians crossing the road.

On the A1067 going to Norwich (east side of Foxley)

The present bus stop and shelter are at the junction of The Street and A1067 but that is not actually where the bus stops. The bus stops on the A1067 on the green triangle of land beside the oak tree. This is a good place for residents on the east side of Foxley, not so good for residents on the west side. The alternative at the Chapel Road crossing, is more in the centre of the village, on a straight piece of road and the grass verge would hopefully allow for a bus shelter in the future.

I need your opinion before we can proceed. I have received quite a number of replies but I would love to hear from more people. If you need a form there are spare copies in the bus shelter or they can be obtained from the parish clerk, Linda Rose at The Elms, The Street, Foxley or by email from foxleyparishclerk@outlook.com

INDOOR HEATED SWIMMING POOL AND SPA

Available for hire
for your private use

Moor Farm Foxley
Tel: 01362 688523

Snell Electrical Services

Jamie Snell
Domestic, Industrial & Agricultural
Electrician

Tel: (01362) 688979

or

Mobile 07778215328

Your local, Friendly Electrician

All types of Electrical work

No Job Too Small

Free Estimates 24hr Call Out

Village News

Boots are made for walking and that's just what we'll do!

Local residents are starting a Friendly Walking Group on the first Tuesday of each month commencing on Tuesday 6th December 2016. The idea is to meet at Foxley Village Hall at 10am, followed by a guided EDP Walk in the local area. The inaugural walk will be in the Elsing area.

If you are interested in being part of this group, please ring/email **Stewart** on **688555/stewart.cormie1@btinternet.com** or **Gillian** on **688450/blyth984@btinternet.com**

Foxley Harvest Lunch

On Sunday 16th October, sixty local residents mostly from Foxley and Bawdeswell gathered in the village hall for Foxley's Harvest Lunch. We tucked into a variety of casseroles with baked potatoes followed by crumbles and custard. It was enjoyed by all with many winning prizes in the raffle. It was also a chance for us to say 'Goodbye' and 'Thank you' to Lyn Page, who was presented with a bouquet of flowers.

Beginner's Tai Chi Classes

Would you like to keep fit in a relaxed, welcoming Tai Chi class? Come and improve your balance, central core strength, and regain flexibility of the joints in a friendly environment. Suitable for all ages.

Tai Chi is an ancient martial art, world renowned for its calming, health enhancing benefits. Join at any time.

Cawston Village Hall on Wednesdays, with Julian Wilde and Elaine Tattersall 5.30pm-6.30pm. Cost is £5 for the hour.

For further information, email: taichischoolnorwich@gmail.com
Phone 01603 466120 / 07775 735805
www.taichi-norwich.co.uk



Established 1946

We are now a stockists for H V Graves fresh meat from Briston. Please visit our Reeve's Larder for regular deliveries from H V Graves. We can also take orders to cater for your own requirements on a weekly basis.

Norwich Road, Bawdeswell, Dereham, Norfolk NR20 4RZ



The Reeve's Larder
FOOD HALL



Millennium Garden



BLUEBELL SQUARE
Indoor Shopping Centre



Reeve's Parlour
Restaurant



Children's Play Area



The BAWDESWELL GARDEN CENTRE

Tel. 01362 688 387 www.bawdeswellgardencentre.co.uk ... where friends meet

SAM STYLE NAILS & BEAUTY

"Elegance with style"

Your local Nail & Beauty Salon
in Bawdeswell

Fully Qualified & BABTAC registered Beauty Therapist | Free Private Parking
Competitively Priced | Open 7 Days a Week

Offering Beauty Treatments including the popular CND Shellac Gel Polish, Manicures, Pedicures,
Nail Extensions, Waxing and Facial Treatments

01362 688128 | samstylenailsandbeauty.co.uk



PRIZE

BINGO

→ Foxley Village Hall ←

SATURDAY 3rd DECEMBER

7 PM For Eyes Down 7.30 PM

RAFFLE

REFRESHMENTS

ALL WELCOME



Reg Charity No303953



Village News

News from Scribbles Pre-school

Here at Scribbles we remembered our heroes in November by making poppy memorabilia and taking it to both Bawdeswell Church and Swanton Morley Barracks - we thank them for the lives they have given us.

We have an exciting last month ahead. We have our Christmas Dinner and Party where we will be joined by all our friends and volunteers and hopefully a special visitor may turn up also ! We will have our Christmas Gift Shop where our children can purchase Reindeer dust, Elf snacks and other goodies.

We are nearly at capacity and we have a waiting list so if you are looking for childcare in 2017 please get in touch! Visit our Facebook page or website for more details <http://www.scribblespre-schoolgroup.co.uk>

Debbie and Team

Sparham Old School Room Kitchen Refurbishment

The Old School Room now has a great new kitchen and we need to thank the following for making it all possible:

Breckland Council for giving us half the cost through their Match Funding Grant, Tony Balderstone for all his work in getting the grant application completed, Councillor Gordon Bambridge for his support of the application, Graham Thompson for doing the wall tiling.

And a very special thank you to Fred Parkin for all his time and effort in getting the kitchen quotes and finding us the right kitchen at the right price!

SOSR Management Committee

Iceni Choir Christmas Concert

11th December at 4.00pm, Bawdeswell Village Hall.

There will be a very special guest!! I wonder who? He will have a special delivery for every child. A family celebration with lots of Christmas music and mulled wine and mince pies.



Come and join fun, friendly fitness classes

At Foxley Village Hall

Where you will enjoy moving to music

Tone and strengthen your body

Improve muscle and core stability

Fully qualified fitness instructor to Bs dip Reps 3

Contact Val on 01328 864358



Thursdays 10-11am

Saturdays 9.30-10.30am

Cost £5 per session



Village News

Bawdeswell Village Hall



It has been another busy month at the hall thus ensuring plenty of work for the band of 7+ volunteer cleaners who meet there every Monday morning. As the year comes to an end they must be thanked for all they have done on the 52 Monday mornings of 2016 to clean the building in readiness for the variety of activities planned for the following week. Sometimes they come in on a Sunday morning too after a function on the Saturday night, especially when there is another function later on the Sunday.

All users of the hall expect to come into a pristine environment. So our volunteers work as a well oiled team and all have their allotted tasks to create a spic and span hall. They deserve a big thank you from everyone. It is up to the rest of us always to tidy up after ourselves before leaving the building. There are no employed cleaners coming in daily to wait on anyone.

Another volunteer deserves our grateful thanks for putting cabin hooks on the internal doors so they can be held open when necessary. It is so much easier than using wedges.

The soup and pudding lunches have been resumed and will take place on the last Thursday of the month, although not in December, so the next one will be on the 26th January 2017. Everyone is welcome, there is no charge but a donation is appreciated. Volunteer chefs prepare the food and there is always a choice of soups and desserts to be enjoyed in a friendly and happy atmosphere.

The hall is meeting the objectives of the grant providers and the Lottery has approved our First Year Operating Report.

The New Year will bring more challenges and new events which we will do our best to meet. We wish all readers a very happy Christmas and New Year. May 2017 be a good year for Bawdeswell and for us all.

Contacts:

Chairman: James Lilwall - 01362 688 499

Bookings: John Mallen - 01362 688 627

Secretary: Marietta Menzies - 01362 688 400



Chicken Cottage Childcare

Monday to Friday

7am to 7pm

Pick Up From
Bawdeswell
School

2, 3 and 4 Year Old Funding

Quality Home
Based Environment

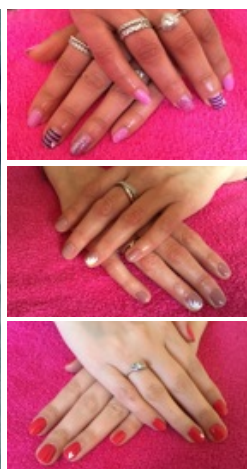
Childcare From Birth
(Ask About Our Sibling Rate)

Before and After
School Club



Call: 01362 688508

Email: dcld6taylor@btinternet.com



Beauty Enhanced

Alice Byrne - Fully qualified and Insured Beauty Therapist.

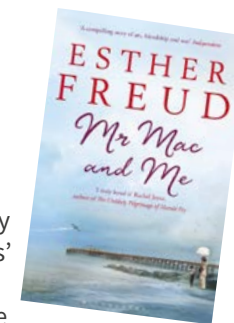
5 Bell Close, Bawdeswell,
Dereham NR20 4SL
07753315949
[www.facebook.com/
Beautyenhanced94](http://www.facebook.com/Beautyenhanced94)

Clubs and Societies



Book Club

"Mr Mac and Me" by Esther Freud



This gentle book is set in Walberswick, on the Suffolk coast, in 1914. The narrator is a 14 year old boy, Thomas Maggs, the only surviving son of a publican and his downtrodden wife. Thomas' adolescence is influenced by the presence in the village of the architect and designer, Charles Rennie Mackintosh and his wife Margaret, who are themselves struggling with family problems and poverty. Charles encourages Thomas to draw and paint, for which he has a talent, but which is crushed by the weight of caring for his own family and schooling.

The outbreak of WW1 brings with it new laws on secrecy and communications, even into the public house owned by Thomas' abusive father, and the behaviour of strangers is immediately of concern. Suspicions grow regarding Charles Rennie Mackintosh, who is innocently connected with Germany through his architectural works and art, leading to a conflict of friendship and duty and which have a profound effect on the whole village.

Adult Thomas sums up his life and adventures after the war, and remembers the influence that Charles Rennie Mackintosh and Margaret had on his growing up – especially in how to care for the little things to make peoples' lives better.

This was a book well worth reading – Freud combines the historical and factual themes with an atmospheric setting, and Walberswick is still as recognisable today as it was in 1914.

*The Book Club meets in the Workhouse Bar on the first Thursday of every month at 8pm. We mostly obtain books from the library so there is not the expense of buying new books each month. We are currently reading "A Christmas Carol" by Charles Dickens and "Hotel du Lac" By Anita Bruckner for discussion at our meeting on 1st December and will read "A Moveable Feast" by Ernest Hemingway" and/or any other novels by Ernest Hemingway for our meeting on 5th January 2017. New members always welcome. Enquiries: **Marietta Menzies 01362 688400.***

GM Carpentry

Carpentry Services | Doors | Windows | Flooring
Kitchens | Bedrooms | Skirting | Architrave | Storage

City &
Guilds

Carpentrygm.co.uk

07906 668574 | glennmunford@googlemail.com



FREE Wi-Fi. Tea and Coffee, Cake and Biscuits available.

Every Tuesday 9.30 - 12pm

Clubs and Societies



Bawdeswell Ladies' Craft Club



We had our last meeting for 2016 at the end of November, how quickly it seems to have come around and once again it is December with all the fuss and fun it brings. We find there isn't time for our craft activities when there are family celebrations, food and gifts to take up our time and thoughts.

It is usually a relief when that is behind us and we get back into the routine of our every 2nd and 4th Thursday afternoon get-togethers.

Our January dates are the 12th and 26th at 2pm in the Committee Room at the Village Hall.

Enquiries: Marietta Menzies 01362 688400



Bridge Club

Sponsored by Bawdeswell Village Hall (Registered Charity No 800970)

The JayCee Bridge Club holds two weekly sessions. We meet every Tuesday evening at 7.15pm for a 7.30pm start at the Foxley Village Hall, and every Friday afternoon at 2.15pm for a 2.30pm start at the Bawdeswell Village Hall in the Meeting Room. Please contact Roger or Patsy for information, or to confirm a session is to take place. Whilst we aspire to play well, our range of bridge playing abilities means that it's really bridge for fun! No regular partners are needed.

Roger Fryatt: 01362 688627 or Patsy Catchpole: 01362 688352.



Foxley Village Hall Coffee Morning

21st December and 18th January at 10.30am

A warm welcome to all. On the third Wednesday of each month. Come along and join us for a coffee and a mardle.

Now Open!



18 School Road
Reepham
Norwich
NR10 4JP

Tel: 01603 870 684

www.mutzkutzprofessional.com



Est 1984
TREE SURGERY AND MAINTENANCE
TREE FELLING
PROVIDERS OF WELL SEASONED LOGS

FOR A FREE NO OBLIGATION QUOTE
CALL 01362 688084 / 07399 448841

abelforestry84@hotmail.com

Clubs and Societies



Bawdeswell Bowls Club

This season has been enjoyable as well as successful. The green was playing to a very high standard, gaining high praise from both home and away teams. Bintree, Foulsham and Lakeside have all had good seasons playing on the Bawdeswell green. Finally the new village hall has been a great asset this season.

Contact **Paul** on **01362 688615** for further information.

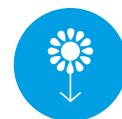


Short Mat Bowls

Foxley Village Hall
Every Monday 7pm - 9pm and Friday 7pm - 9pm.

Our short mat bowls is not the game you may have watched on TV where the game is played in absolute silence: a single cough incurring instant glares of castigation. No, this is a game where chatter and a considerable amount of laughter (and a cup of tea and biscuit at half time) are an intrinsic part of the evening. The atmosphere is distinctly friendly and sociable. Why not come along and have a go? There will be bowls for you to try and plenty of help and encouragement from members.

To find out more, call **Dennis** on **01362 688099** or **Carole** on **688567**.



Flower arranging

December 13th at 2pm, Bawdeswell Village Hall. £7.50 per person, including refreshments.

Wreath Day: Thursday 8th December, 10.30am to 3.30pm at Bawdeswell Village Hall.

Wreath Day Sale at Bawdeswell Church: Saturday 10th December 10.00am - 2.00pm.

Contact **Sue Lilwall** on **01362 688240** for further information.



FiftyAndBeyond

Christmas Buffet Lunch

Thursday 1st December

**12.30pm for 1.00pm start
at Bawdeswell Village Hall**

Come and start your Christmas celebrations with us at our **FAB** Christmas Buffet Lunch. There will be a raffle with great prizes including luxury Christmas hampers plus a free Lucky Ticket draw - not to mention lots of festive food and entertainment!

The tickets are only £3 each and will be on sale at the next **FAB** meeting on 2nd November at Foxley Village Hall. You can also call one of the numbers below and we will arrange to deliver your tickets. Admission is by ticket only and numbers are limited. Transport can be arranged if necessary.

**Bill & Jackie 688956
Janet 688749**

Look forward to seeing you there!



Clubs and Societies



The Friends of Bawdeswell School

We meet every second Tuesday of the month at Bawdeswell Village Hall Meeting Room, 6pm. New members always welcome. Help as little or as much as you like.



Beck WI

The Beck is an enthusiastic group which meets on the second Monday of each month at 7.30pm in the Old School Room at Sparham.

We held our AGM this month with useful updates from our President, Secretary and Treasurer. This was followed by wine and a range of excellent homemade snacks. Two of our members visited Denman College recently and took part in a number of activities including a tour around Belgravia Square and the intricacies of cheese-making!

We have a very varied programme planned for 2017 and guests are always welcome to join us.

Next meeting: January 9th is an evening of poetry led by Mr Ernie Richards.

We are always looking to recruit new members. Please contact **Christine Woor** on **01603 872427** or **Liz Waddy** on **01362 688910** for further information.



Wensum Valley Birdwatching Society

Indoor meetings at Weston Longville Hall for All, 7.30pm. All welcome. (There is a £2.00 charge for non-members)

Thursday 19th January – The Birds and Animals of Argentina by Allan Hale;
Thursday 16th February – Unravelling the Mysteries of Bird Migration by Ieuan Evans of the BTO.

Field trips: Saturday 28th January – An all-day visit to Holkham; Sunday 26th February – All day at Horsey.

Visit www.thereevestale.co.uk for all the latest news from WVBS. Contact Sue Gale – wwbs.publicity@gmail.com - for more information.



Christmas With IC Travel!

Pick-ups including Fakenham, Bawdeswell, Lenwade & Taverham

Fully escorted trips – Fast, friendly direct service!

Refreshments served on board! - Over 20 years' experience - Fully insured

Sat 3 rd Dec	Lincoln Xmas Market	8am	£27
Thurs 8 th Dec	John Rutter & Royal Phil Orch at Royal Albert Hall	8.30am	£60
Fri 9 th Dec	Thursford Christmas Spectacular	5.30pm	£48
Sun 11 th Dec	Westfield Stratford Xmas Shopping	8am	£25
Thurs 15 th Dec	Blenheim Palace & Xmas Lunch	7am	£50
Tues 20 th Dec	André Rieu – SSE Wembley Arena	1pm	£105
Sat 7 th Jan	Star Wars Exhibition – O2	7.30am Child	£45 £40
Sun 12 th Feb	Strictly Come Dancing On Tour – O2	8am	£80

***Note that pick-up times stated are from Taverham and Fakenham 30 mins earlier**

IC Travel— 39 The Street, Ringland, Norwich NR8 6AB
01603 868680

See a full list of trips at www.ictravel.co.uk

Request your free 2016 brochure!

Clubs and Societies



Fifty and Beyond (FAB)

FAB meets on the first Wednesday of every other month at 10.30am - 12pm at Foxley Village Hall. Our next meeting on Wednesday 2nd November will include a talk with illustrations on 'Old Dereham', by Gordon Olley which should be really interesting. We will have the usual good company, home made refreshments, jigsaw swap and our famous raffle. This will also be our last meeting before our Christmas Party which is on Thursday 1st December at Bawdeswell Village Hall. Tickets for this event will be on sale (£3) at the November meeting and this is usually a sell out so please get your tickets early.

If getting there is a problem we can arrange transport. For this or any other enquiries, ring Bill and Jackie Cunliffe on **688956** or Janet Cockburn on **688749**.



Little Monkeys Parent and Toddler Group

Come along to our friendly group for parents, grandparents and their 0-4 year olds. Have a cuppa and a chat while your little one plays, or maybe join your child for fun craft activities and messy play. Best of all, your home gets to stay nice and tidy...for a morning anyway!

Find us at Bawdeswell Village Hall every Friday morning during term time, 9.15-11.30am. Only £2 for you and your 'little monkey' (50p for each additional monkey). Includes snacks.

For more information, contact Kate on **(01362) 688911** or Anne on **688447**.



Bawdeswell Table Tennis Club

Do come along and join us on Monday evenings. All levels of experience are welcome. We have a keen 14 year old who enjoys playing with the 'more mature' players! It would be even more fun if there were other young adults playing too. Under 16s must be accompanied by an adult. It is great fun and some of us pop into the pub after for a well earned drink!

Every Monday from 7.30 to 9.30pm. Cost is £3 per adult, £2 for under 18 year olds. Please contact **Janet** on **01362 688749**.



All **tree work** carried out

Fully qualified Arborist | Free estimates | Friendly service

- ▶ Pruning and felling
- ▶ Identification and diagnosis
- ▶ Selection and planting
- ▶ Hedge cutting.

Firewood available for delivery in local area.

Call Tim on **07789 114540**

www.braybrookservices.co.uk

J. D. Home & Garden Services

- ✓ Garden Fencing Supplied & Erected
- ✓ Patio & Paving Laid
- ✓ Sheds Supplied & Erected
- ✓ Replacement External Doors & Windows
- ✓ Conservatories Supplied & Erected
- ✓ Floor & Wall Tiling
- ✓ All Forms of Domestic Carpentry



Call Jason - **01362 688824 or 07780 988628**
Email: jhomeandgarden@btinternet.com

www.jdhomeandgarden.co.uk

B B BUILDING SERVICES

*** All General House Repairs ***

Alterations | Extensions | Renovations | Restorations | Conversions
Brick & Flint Work | Carpentry | Gutter Repairs & Replacement
External Groundwork | Drainage & Pipe Work | Digger Work

All Insurance Work Undertaken

*** Fully Insured * Free No Obligation Quote ***

For an outstanding service at a realistic price call Brian

01362 688531 or 07901 805595

B B LANDSCAPING

Patios | Paving | Garden Walls | Brick Work | Steps | Brick Weave | Driveways
Paths | Gates | Fencing | Decorative Ironwork | Raised Beds | Gravel Boards
Lawns – Seed or Turf | Hedge & Tree Planting | Hedge & Tree Cutting & Clearance
Garden Clearance | Drainage & Pipe Work | Mini Digger Work
Redesign All Outdoor Areas

*** Fully Insured * Free No Obligation Quote ***

For an outstanding service at a realistic price call Brian

01362 688531 or 07901 805595

Services



Community Car Scheme: Bawdeswell, Bylaugh, Foxley

For those who are new to the village, and have no other means to get to the local doctors, dentists and hospitals, the following may be useful.

The car scheme is run for the benefit of the three villages. The charge to the passenger is 20p per mile for a return journey. The remainder of the costs to the driver is provided by Breckland and the Parish Councils of Bawdeswell and Foxley. We cover the local hospitals in Dereham and Norwich, dentists in Fakenham, Taverham and Reepham, and opticians in Dereham, plus the possibility of travel to Cambridge hospitals if required. We can only take passengers who have medical based appointments from the three villages.

To book a community car, please ring Sylvia McColville on 01362 688189. Should she be unavailable to take your call, Jackie Cunliffe (688956) will make the arrangements. If you leave a message, please leave your name, address and phone number clearly so that your call may be returned at the earliest opportunity.

I would like to thank all the drivers in the scheme for their participation and enthusiasm after another busy year; Jackie Cunliffe and Sylvia for taking the bookings, and to wish everyone a Happy Christmas and New Year.

Angela Shannon – CCS Co-ordinator



Post Office

Opening hours and locations

Weekday	Location	Opening Times
Monday	Lenwade, Bridge Inn	8.30am - 10.30am
Monday	Attlebridge Church	10.45am - 12.45pm
Tuesday	Bawdeswell Church	9.00am - 12.00pm
Tuesday	Foulsham, New Frost Hall	12.30pm - 3.30pm
Wednesday	Bintree Church	8.30am - 10.30am
Thursday	Foulsham, New Frost Hall	8.30am - 11.30am
Thursday	Lenwade, Bridge Inn	12.00pm - 2.00pm
Friday	Bawdeswell Church	9.00am - 12.00pm
Friday	Bintree Church	12.30pm - 2.30pm

Why not hire the new Village Hall for your next event?

MEETINGS | PARTIES | RECEPTIONS | PRESENTATIONS | CELEBRATIONS
INDOOR GAMES | DEMONSTRATIONS | EXHIBITIONS | REUNIONS AND MORE

All are possible in our modern, flexible, and welcoming new hall, which has a variety of separate rooms.

- ✓ Wi-Fi
- ✓ Good Lighting
- ✓ Fully Equipped Kitchen
- ✓ Reception Area
- ✓ Cinema Projector and Screen



The hall is available to hire for one off events, or you can book a regular slot.

Tel: 01362 688627

Email: hello@bawdeswellvillagehall.co.uk

bawdeswellvillagehall.co.uk



Hendry & Sons Funeral Directors

Private Chapels of Rest
Richard Hendry DIP.F.D
Member of N.A.F.D



01362 683249

Station Road, Foulsham, Dereham, Norfolk



R. WELLS MEMORIALS

Your Independent Memorial Mason

Memorials in marble, stone and coloured granites

Workshop: 01603 755524

Office: 01603 485691

www.rwellsmemorials.co.uk

Unit 8 Sawmill Close, The Street, Felthorpe, NR10 4BH

Parish Councils

Bawdeswell Parish Council Meeting 7th November 2016

Present: B. Cunliffe (Chair), D. Shannon, J. Mallen, R. Read

District Councillor G. Bambridge

Mrs. J Boxall (Clerk)

Members of the public - None

PC Matters

To approve grounds maintenance contract. Four companies were approached for grounds maintenance quotes, two quotes were received. It was proposed and agreed to accept the quote from CGM for the recreation ground maintenance with collection of cuttings. It was agreed that, subject to sufficient insurances being in place, the Council would retain the existing contractor for the churchyard, Jubilee Gardens and village green. It was hoped that Adams Pit will continue to be managed by volunteers.

Planning

3PL/2016/1196

Standing of 3 units of accommodation at The Shetlands, Reepham Road, Bawdeswell, NR20 4RX

The Council agreed to object to this application on the grounds that the development is a considerable distance outside the settlement boundary, is unconnected to agriculture and is situated on a busy road with poor visibility for vehicles leaving the site.

3PL/2016/1230

Proposed extension and alteration to existing semi-detached cottage, enabling a third bedroom and additional ground floor living area and garage annexe conversion at 21 Reepham Road, Bawdeswell, NR20 4RU

The Council agreed to object to this application as they felt the footprint of the extension is too large and may overshadow neighbours' property. The proposed annexe is a separate dwelling, unconnected to the main house which is contrary to Breckland's Policy of refusing permission for backyard development and separate annexes.

3PL/2016/1280

Extension & alteration to detached house to form a link between existing house and

Reepham homehardware

Dulux Paint Mixing System | Calor Gas | Hardware | Gardening | Timber
Electrical Tools | Shingle | Pet | Housewares | Carpet Cleaner Hire

Local Deliveries

Tel: 01603 871064

3 Townsend Court, Reepham, NR10 4LD

www.reephamhomehardware.co.uk

Open: **Mon-Fri** 9am - 5.30pm **Sat:** 9am - 5pm **Sun:** 10am - 12.30pm



Breckland Care at Home

- ✓ High Quality Home Care
- ✓ Enabling the elderly/disabled to stay in their own homes

Based in North Elmham, registered with NCC and CQC. All staff have Enhanced DBS clearance.

Now Recruiting Care Workers and Household Support.

18yrs+, full driving licence and a vehicle. No experience necessary. FREE training, FREE uniform. For more information, visit www.brecklandcareathome.co.uk or call **01362 667042**

J MEARS LTD

BUILDING CONTRACTORS

All types of Building work undertaken

New houses | Extensions | Renovations | Roofing | Repairs

Warranty available on all work

01362 688251

Old Hall Farm, The Street, Foxley



Registered house builder



Paul E. Soanes (est. 1974)

TV Engineer and Aerial Installer

Having difficulty setting up your TV, DVD, Digital?

For help call: 01603 871251

Parish Councils

outbuilding at Barwick House, The Street, Bawdeswell, NR20 4RT

The Council had no comment or objection to make with regards to this application.

Local Plan

Bawdeswell Parish Council submitted their comments to Breckland, a copy of which can be found on the website. It is understood that following receipt of comments, Breckland are now rewriting the Local Plan for submission to the Planning Inspector.

The next Parish Council meeting will be held on **Monday 5th December** in the Village Hall starting at 7.30pm. It is proposed that future meetings be held on the third Tuesday of the month starting in February. This will be confirmed at the December meeting but residents are asked to check the website and noticeboard for confirmation.

At the December meeting the Parish Council will be setting the precept for 2017/18.

The Parish Council would like to take this opportunity to wish everyone a Very Merry Christmas and Happy New Year!

If you have any concerns please contact the Parish Clerk Jo Boxall, White House, Pettywell, Reepham, NR10 4RN, Tel: 01603 879480
Email: bawdeswellpc@hotmail.com

Full draft minutes from this meeting and minutes from previous meetings, including financial/audit information and policies can be found on the Parish Council website: <http://bawdeswell.norfolkparishes.gov.uk>



ANDREW SPALDING

WEB DESIGNER & WORDPRESS DEVELOPER

WORDPRESS WEBSITE SERVICES

- Theme Customisation
- Correct Errors On Website
- Maintenance



Call Us Now

01362 850055 or 07876082297

✉ hello@andrewspalding.co.uk www.andrewspalding.co.uk

PARSONS

Your local
independent
team agent...

Contact us
for your free
market appraisal...

Find our properties on  **OnTheMarket.com**



Dereham

01362 696895

Reepham

01603 870473



www.parsonsandcompany.co.uk www.rightmove.co.uk www.teamprop.co.uk

Parish Councils

Foxley Parish Council Meeting 13th October 2016

Present: Mr N. Mears (Chairman), Mr J Harvey, Mr N Hatch, Mr D Barrett, Mr G Bambridge (district councillor), Mrs L Rose (clerk) and 2 parishioners.

1. Apologies for absence: none
2. There were personal but no prejudicial declarations of interest by Council members on item 8.2
3. The minutes of the meeting held on 28th July 2016 were approved and signed: proposed DB, seconded DB.
4. Items from the last meeting, not on this agenda.

4.1 Bus stop – A meeting has been arranged for Tuesday 25th October with the Travel Information Officer from Travel & Transport Services, part of the Community & Environmental Services at Norfolk County Council and a representative of Stagecoach bus company to discuss bus stops in the village.

4.2 Parish partnership scheme – The addition of 'gateway' signs to emphasise the 50 mph speed limits as you enter Foxley on the 1067 would cost £1,500 per sign. Clerk to contact highway engineers to see if a cheaper option is possible.

4.3 Breckland Local Plan – GB detailed development since last meeting. Comments from villages need to be submitted to Breckland before the end of October. Councillors directed the clerk to contact Breckland as they are happy for Foxley to be considered as a 'PD05B' village, provided the specifications are not materially altered in future discussions, as it allows for some development but protects the village from large unwanted expansion.

5. Planning applications:

Cherry Trees, The Street – Garage extension approved

Long Acre, Chapel Rd West – Appeal dismissed

Land adjacent to Lawrence Place – Proposal to erect 5 dwellings. This caused considerable discussion. The proposed development is outside the village settlement boundary. However, at present the site is an eyesore and the development would remove this and should improve the site. There was also concern as to where the hay bales and vehicles at present stored on the site be moved to?

6. Application to claim lost or under used foot paths. In 2025 all unrecorded or under-recorded ways could be extinguished to provide certainty for landowners. It was decided not to pursue the offer from Helen Chester to research lost and under-used footpaths in Foxley but for the clerk to research this. If any resident has any information about, or can remember, any footpaths in Foxley that have now fallen into disuse please contact the clerk.



CHRISTMAS COMES TO BAWDES WELL

With the **ICENI** Choir

A family Christmas celebration
with 45 mins of popular seasonal
music that will appeal to all ages

Bawdeswell Village Hall

Sunday 11th December

4:00 pm

Tickets £6 (children free)

available from

Janet Cockburn 01362 688749

James Lilwall 01362 688499

Ann Askew 01603 868435

Price includes mulled wine and mince pies...



...plus a special delivery for children!



Parish Councils

7. Foxley Parish Website. Although still in the early stages of development please check out the site. Your views and comments would be welcome.

<http://foxleyparishcouncil.norfolkparishes.gov.uk/>

8. Finance

8.1 Summary of Accounts for the period from 29 July 2016 to 12 October 2016 were approved.

8.2 Payments to Foxley Village Hall and Foxley Church were approved.

9. Clerk's position approved and payment discussed, trial period completed.

Proposed: NM, seconded: DB. Approved

10. To discuss and approve financial plan for 2017 – 18. Proposal to set precept at £4500 to account for developments in village. Proposed: NM, seconded DB. Approved

11. Blocked ditch adjacent to Jubilee Court. Clerk to contact highways department.

12. Correspondence: PC Amy Lucas – appointed community police officer.

HMRC demand for £275.22 unpaid tax, owing from May 2015 until July 2016.

Clerk and chairman have contacted the tax office – awaiting security codes to be issued so that this matter can be pursued.

Hornsea Offshore Windfarm Project – information has been sent to householders and councillors as Foxley is in the large 'scoping area' where the cable may be routed from the windfarm to the onshore infrastructure.

13. The dates for the next meeting – Thursday 12th January 2017 at 7:30 pm in Foxley Village Hall.

Contact details for Parish Clerk: Linda Rose

Address: The Elms, The Street, Foxley

Tel: 01362 688488 / 07885 745500

Email: Foxleyparishclerk@outlook.com

Philip Jacobs

Oil Fired Boiler Servicing,
Repairs & Breakdowns

Friendly, reliable, local service

Tel: 01362 688 398
Mob: 07887 902 815

**ADVERTISE HERE
FROM JUST £6PM**

reevestale.co.uk/advertising or call
01362 688183 for more information



All types of Doors and Gates
Sash, Stormproof and Casement windows
Staircases and Interior Items
On-Site Carpentry

Matthew Partridge NVQ Level 3
Tel: 01362 683771 Mob: 07721 775005



**Cassie's
Dog Grooming**

Over 10 years experience

FREE Collection & Delivery Service
(within 3 miles)

Tel: 01263 862652
Mob: 07775 444082

Denver House, The Street, Hindolveston

Certax Accounting

Self-Assessment Tax Returns
Annual Accounts
VAT Returns

For a free initial consultation at a time to
suit you contact **David Pooley ACIB, MIAB**

Tel: 01603 866542

E-mail: davidpooley@certax.co.uk

Peter Empson

Maintenance Services

Services provided
for the Home and garden

FREE ESTIMATES

Please call to discuss your requirements
(01362) 680107/07720 535357
peterempson69@hotmail.co.uk

Bloomin' Hair

Ladies and Gents hair salon

Cuts | Colours | Perms



Find us in
**Bawdeswell
Garden Centre**

tel: 01362 688588



**Louise Ledbury
The Hair Room**

Fully qualified in ladies' and men's hairdressing

Trims | Children's trims | Blow dries | Rollers
Perms | Colours

Gift vouchers now available
To book an appointment call:

01362 688 666
2 Saxon Meadows Bawdeswell

Church News

The Friends of Bawdeswell Church

Our focus is now firmly on our last event of the year, the annual Wreath Fair on Saturday 10th Dec, 10am – 2pm in the church. It's now one of our most popular events and we have additional stalls this year to add to the occasion. There will be a seasonal produce stall, the hamper raffle and a new addition, good quality books and 'nearly' new gifts. You can preorder wreaths or Christmas cakes and puddings from Sue on 01362 688240 if that helps. So do come along, seasonal refreshments will be available and you'll be assured of a warm welcome.



'protecting & enhancing this
unique building for the future'

The harvest supper profit was an amazing £938. Thank you to everyone who came and supported us

December 10th: 'Christmas Wreaths, Crafts & Seasonal Produce Stalls' – Church
10am – 2pm

We have been planning our 2017 programme of events and these are now all booked, make a note of them in your diary:

Jan Sat 21st: 'Friends 100 Club' thank you Reception – 7pm Village Hall

March 25th: 'Bingo Night with Supper' – 7pm Village Hall

May Sat 6th: 'Spring Barn Dance' – 7pm Village Hall

July Sun 23rd: 'Festival Players – Shakespeare's Merry Wives of Windsor' 6.30pm
Church (if wet we will use the church)

Sept 22nd-24th: 'Flower Festival Weekend' – 10am - 4pm Church

Dec 16th: 'Christmas Fair with Wreaths' – 10am – 2pm Church

All ticket information: **01362 688499**.

James Lilwall – Chairman; Susan Ward – Secretary; David Shannon – Treasurer; Peter Jervis – 100 Club Secretary; Committee Members – Robin Taylor, Sandi Taylor, Angela Shannon, Nicholas Ward and Susan Lilwall.

DAVIS EGG SALES

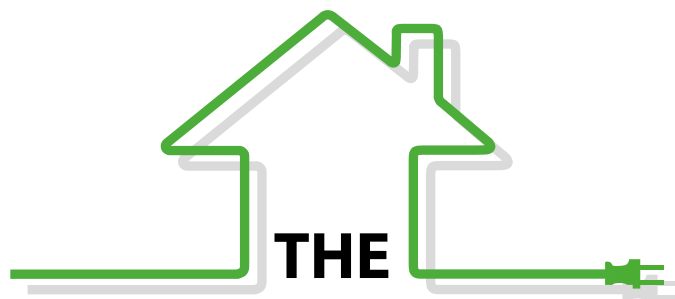
MOOR FARM, FOXLEY, DEREHAM, NORFOLK, NR20 4QN

Your Local Egg Supplier



Pre-packs | Keyes Trays
Shrink wrapped | Free Range

Tel: (01362) 688523



NORFOLK SPARKY

Tony Mitchell - Electrician

01362 688368
07748 765115



Church News

Local church news

A special service was held in Bawdeswell Church on Thursday 10th November at which the Revd Sally Kimmis, Team Rector designate, was licensed by the Bishop of Lynn as Priest in Charge of Bawdeswell and Foxley. She was welcomed by local dignitaries, clergy, the churchwardens and other well wishers. The Festival Choir sang an arrangement by John Rutter of All Things Bright & Beautiful. Thank you to everyone who took part and all those who provided refreshments afterwards.


On Friday 11th November, Armistice Day, a wreath was laid at Foxley War Memorial and two minutes silence observed. Muffled bells were then rung at St. Thomas church.

On 13th November Bawdeswell hosted the Remembrance Day service for Foxley, Lyng, Elsing, Bawdeswell, Bylaugh and Sparham. The Festival Choir sang the anthem Flowers Remembered by John Rutter, during the laying of the wreaths. This year we laid a special wreath in memory of the two airmen who lost their lives when their Mosquito crashed into the church.

At the time of writing we are looking forward to 27th November and a joint Advent Carol Service at which Revd Sally and the Festival Choir will be taking part. We are very grateful to James Lilwall and indulgent members of the ICENI choir who form the Festival Choir for these special occasions.

We look forward to welcoming new faces in church in the run up to Christmas and hopefully on Christmas Day, which we always value as a special family occasion. Foxley's Christmas Day service will be taken by the Venerable John Ashe, Archdeacon of Lynn. Please join us for one or more of the December services if you can. It's a sure way to a Very Happy Christmas.



John Harvey and Robin Taylor, Churchwardens



The Norfolk Sweep

*Friendly, Professional Service • Fully Insured
All Types of Chimney / Flues Swept*

Anthony Walden
Tel: 01362 680189 www.thenorfolksweep.co.uk


SEAN KNOWLES BUILDER

All types of Brickwork, Flintwork, Extensions,
Repointing, Renovations and Repairs
Experienced, fully qualified and insured.

**Tel: 01263 862652
Mob: 07818 294282**

Denver House, The Street, Hindolveston

AquaFix

Bathrooms & Kitchens

A complete Bathroom/Shower room,
Wetroom & Kitchen fitting service

All plumbing work, floor & wall tiling, general property maintenance
For a professional & affordable installation - no job too small

Call Frank - 01362 688678 or 07877 427344

Paul Downs

For all your woodworking requirements

Carpentry | Joinery | Cabinet Making
and Bespoke Furniture, Doors and Windows

Tel: 07765 957386 or 01953 883868
www.goodwithwoodnorfolk.co.uk



BELLE FLEUR FLORIST

Your Local Florist Tel: 01362 688897



Top Quality Fresh, Silk & Dried Flowers
for All Occasions

Arrangements, Bouquets & Wedding Designs
Funeral Flowers, Birthdays and Anniversaries
25 years Experience, Delivery Service Available
Open 7 Days a week.

GIFTS & THINGS

Your Local Gift Shop Tel: 01362 688897

An Aladdin's Cave of unique gifts
for everyone and all occasions.

Open 7 Days a week.





**BLUEBELL
SQUARE**
Indoor Shopping Centre

VISIT YOUR LOCAL SHOPPING CENTRE

A Selection of
Independent Shops
in a pleasant courtyard
setting within



A PLEASANT WAY TO SPEND THE DAY www.bluebellsquare.co.uk



Country Modern

Vintage, Antique and Preloved Pieces - Brought Back to Life with Passion & Paint
Furniture | Accessories | Interiors | Brocante



Quality Hand Painted Furniture **Commissions**
Painting Courses **Vintage Chalk & Milk Paints**

Open: Mon, Wed, Fri & Sat : 10am - 4pm

Country Modern, Nowhere Lane, Great Witchingham, Norfolk NR9 5PD

contactus@countrymodern.co.uk www.countrymodern.co.uk 01603 554224 / 07789 502946

Moor Farm Stable Cottages

Moor Farm, Foxley, Dereham, Norfolk, NR20 4QP

A Courtyard of 8 2/3 Bedroomed Converted Stables
together with Individual Cottages

All fully equipped and Centrally heated

Long or Short Term Lets

OPEN ALL YEAR

Tel: (01362) 688523 (24hr answerphone)
(01362) 688393 (evenings)

www.moorfarmstablecottages.co.uk

Church News

Letter from Sally

Where did the animals come from?

I have three grown-up daughters. None of them was ever asked to play Mary in school nativity plays, but were variously shepherds, sheep, a donkey, angels and even a robin.

Now, apart from sheep – who were presumably left on the hillside whilst the shepherds went to find Mary, Joseph and the baby after the visit of the angels – there is no mention in either Matthew or Luke's gospels about animals in the Christmas story. There are lots of hints, of course. Mary gave birth in some kind of animal-stall and laid her baby in a manger, because there was no room for them in the inn. The wise men had to get there somehow and so human imagination has given them camels to ride on.

Am I being a killjoy? Not really, because I still get teary year-after-year as I watch nativity plays and see the excitement in children's eyes at Christingle services. But I suppose I am thinking about the real Christmas story.

Mary, not much more than a girl, and Joseph, whom we assume is a good deal older, have to leave their home in Nazareth to travel the 70 miles to Bethlehem to register in the census. (No donkey mentioned, I'm afraid!) As we know, shortly after arriving there, Mary gives birth to Jesus. The wise men inadvertently tip-off king Herod about the birth of this rival 'king of the Jews'. Herod was frightened and decided to kill all children under two years old, living in and around Bethlehem.

An angel warns Joseph in a dream and tells him to take his little family to Egypt and wait until Herod has died. We're not told how they got there, but it must have been an arduous journey, with little money or other resources. They eventually return to Nazareth, where 'the child grew and became strong, filled with wisdom; and the favour of God was upon him.'

This Christmas, think of this refugee family with their small child and think of the millions living as refugees today, many of them fleeing from areas not so far away from Jesus' home country. Pray that the favour of God will be upon them.

The Peace of Christ be with you this Christmas-time,

Rev'd Sally Kimmis

ALL SAINTS BAWDESWELL

this Christmas

SUN 18TH DECEMBER

Carol Service with The All Saints Festival Choir

4pm | Seasonal refreshments available

SAT 24TH DECEMBER

Christmas Eve - Holy Communion with carols

9pm

SUN 25TH DECEMBER

The 10.30 - Short informal service for all the family
with readings & carols

10.30am | Seasonal refreshments available



We'd love to see you there

Church Services

December Church Services

Date	04/12	11/12	18/12	24/12	25/12
Season	Second Sunday of Advent	Third Sunday of Advent	Fourth Sunday of Advent	Christmas Eve	Christmas Day
Colour	P	P	P	W	W
Foxley	09.00 HC PB JE	10.30 OMS +T	16.00 Carols CW		10.30 HC 1 JA
Lyng	09.00 HC 2 RH1		18.30 Carols CW	16.00 Christingle CW	With Elsing
Elsing	10.30 HC1 JE		16.00 Carols CW		10.30 HC 1 TD
Bawdeswell	10.30 HC 1 RH1		16.00 Carols CW	21.00 HC 1 JA	The 10.30 CW
Bylaugh		15.00 Carols RH2			
Sparham	10.30 OASIS		10.30 Carols TD		09.15 HC PB DA

For JANUARY 2017 Services, please consult Notice Boards or –
Bawdeswell and Foxley: www.heartofnorfolkbenefice.org.uk
Lyng, Elsing, Bylaugh and Sparham: www.reephambenefice.org.uk

Key:

RH1: The Reverend Canon Richard Hanmer
RH2: The Reverend Canon Robin Hewetson
JA: The Venerable John Ashe
TD: The Reverend Tim Dean
JE: The Reverend Joy Elkins
+T: The Right Reverend Bishop Tony Foottit
DA: The Reverend Dennis Ackroyd

The 10.30: Informal all-age worship
Oasis: Café Service
HC: Holy Communion
OMS: One More Step
PB: Prayer Book



KING'S HEAD HOTEL

2 Holt Road North Elmham Dereham NR20 5JB
01362 668856 kingsheadhotel.net

Always a choice of

Roast Topside of Beef

Roast Lain of Swannington Park

Honey Glazed Gammon

Roast Breast of Norfolk Turkey

Steak & Ale Pie

Fish of the Day

Complimented by potatoes roasted in duck fat & fresh seasonal vegetables

Vegetarian Menu

To book your table call us on 01362 668856

Sunday Carvery

12 noon – 2pm

New Years Eve

Saturday 31st December

5 Course Dinner

£29.50

Served at 8pm



Hot & Cold Smoked Salmon
pickled cucumber, horseradish crème fraîche & Marie rose dips,
granary bread & butter

Smooth Chicken Liver Pâté
Cumberland jelly, melba toast

Deep Fried Breaded Camembert
bramble apple chutney

10th Ribeye Steak
straw potatoes, balsamic dressed baby vine ripened tomatoes, watercress, Béarnaise sauce

Pan Fried Seabass, Crab & Brown Shrimp Bisque
chive crushed new potatoes

Chargrilled Chicken Breast on Tomato & Red Pepper Tagliatelle
crispy Parma ham, cream sauce

Wild Mushroom, Chestnut & Thyme Pithivier
parsnip & beetroot crisps

all served with a shared vegetable medley

Sicilian Lemon Cheesecake
raspberry coulis, fresh raspberries

Apple & Stem Ginger Crumble
English custard

Warm Treacle Tart
vanilla ice cream

Norfolk Cheese Board to Share
Carr's water biscuits, celery, chutney

Tea & Coffee

KING'S HEAD HOTEL
2 Holt Road North Elmham Dereham NR20 5JB
01362 668856 kingsheadhotel.net





A **great** selection of **independent shops**
set inside **Bawdeswell Garden Centre**

www.bluebellsquare.co.uk
8 shops under a single roof

Tudor Rose Miniatures

Doll Houses | Miniatures | Accessories &
Supplies | Workshops

Tel: 01362 688669

closed Mondays

Belle Fleur Florist

Top Quality Fresh, Silk & Dried Flowers for all
occasions. Delivery available

Tel: 01362 688897

Animal Art

Animal Art Studio & Gallery exhibiting a variety
of drawings to view or purchase

Tel: 07748 908518

Romba Handbags

High Quality Leather & Novelty Handbags &
Accessories

Tel: 01362 688866

Christmas Gifts

With Christmas just around the corner, there are
plenty of unique & unusual gifts to be found in
the square. Visit us today.

Gifts & Things

An Aladdin's Cave of unique gifts for everyone
and every occasion

Tel: 01362 688897

Bloomin Hair

Ladies & Gents Hair Salon
Cuts | Perms | Hi-Lights | Sets & Blow Dries

Tel: 01362 688588

closed Mondays

the Little Stained Glass Shop

Stained Glass | Copper Foil | Leadwork & Fusing
Commissions | Repairs | 25 Years' Experience

Tel: 01362 688735

closed Mondays

Romba Footwear

Shoes of Comfort & Style | Wide Fitting
Orthotics | Padders, Rieker and more...

Tel: 01362 688866

Dalvey of Scotland

Exclusive range of gifts for men.
Open 7 days a week.

Tel: 01362 688897



A pleasant way to spend the day.

Bluebell Square
Norwich Road
Bawdeswell
Dereham
Norfolk, NR20 4RZ

tel: 01362 688387
web: bluebellsquare.co.uk