

Dec 2021  
Jan 2022

.....  
**FREE**

The

# Reeve's Tale

News | Events | Local Services

Magazine



Bawdeswell & Foxley

[thereevestale.co.uk](http://thereevestale.co.uk)



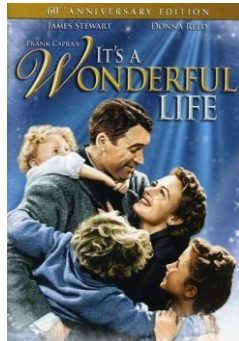
**BAWDESWELL  
VILLAGE CINEMA**  
part of registered charity 800970



## This Christmas



**The  
Village  
Cinema  
is back**



**It's a  
Wonderful  
Life**

**Saturday 11<sup>th</sup> December – Open 6.30 for 7.30 pm start**

Come and see this annual must watch Christmas film on the big screen. Fully remastered in great 4K (brilliant picture and great sound – to those who don't know what 4K means!!) 60<sup>th</sup> Anniversary Edition – still in black and white.

**COVID 19** – We prefer people to use hand wash, wear masks until seated, be mindful of those who wish to keep distances, and sign in for track and tracing either by NHS app or details via a written list.

**Doors Open 6.30pm, Bar/Cafe open 7pm– Films Start at 7.30pm**

**Adults £5, Over 60 £4.50, Under 18 £3, Family (2A+2C) £14 + £2 each extra child**

**Tickets on sale in Reception on the night.  
There will be the opportunity to pay by cash and card.**

Tel: 01362 688749 or email: [BawdeswellVillageCinema@gmail.com](mailto:BawdeswellVillageCinema@gmail.com)  
<https://www.facebook.com/BawdeswellVillageCinema/>  
<https://twitter.com/BawdeswellFilm1>



You can also email us and ask to be put on our distribution list which will ensure that you get information about our film programme, reminders for each film and give you the opportunity to help choose our next films



# WELCOME

## The Big Annual Thank You

It's time to say a big thank you to all those people who have given their time and money to keep The Reeves Tale in print.

Thank you to everyone who has contributed news, letters, information and articles. To all the volunteers who help to get the magazine through the front doors of all the villages' residents, come rain or shine. To our advertisers, many of whom support the magazine year after year, your contribution is vital to the survival of the magazine. Also, to everyone who takes the time to read the magazine.

We wish you and your families a safe, healthy and happy Christmas.

Anne and team

### Next copy deadline

**15<sup>th</sup> January 2022**

Please email  
**magazine@bawdeswell.net**

Send your stories, letters and ideas to  
**magazine@bawdeswell.net** or call us  
on 01362 685308.

### Advertising in The Reeve's Tale

If you would like to advertise your business within The Reeve's Tale, please contact us via email  
**magazine@bawdeswell.net** or  
visit **www.thereevestale.co.uk**  
for advertising rates.

Front Image:  
*Bawdeswell Church*  
*Bill Cunliffe*

## Why not hire the Village Hall for your next event?

MEETINGS | PARTIES | RECEPTIONS | PRESENTATIONS | CELEBRATIONS  
INDOOR GAMES | DEMONSTRATIONS | EXHIBITIONS | REUNIONS AND MORE

All are possible in our modern, flexible,  
and welcoming hall, which has a variety of  
separate rooms.

- ✓ Wi-Fi
- ✓ Good Lighting
- ✓ Fully Equipped Kitchen
- ✓ Reception Area
- ✓ Cinema Projector and Screen



The hall is available to hire for one off events, or you can book a regular slot.

Tel: 01362 688627

Email: [BVHbookings@bawdeswellvillagehall.co.uk](mailto:BVHbookings@bawdeswellvillagehall.co.uk)

[bawdeswellvillagehall.co.uk](http://bawdeswellvillagehall.co.uk)



# FOXLEY

# VILLAGE HALL

## TO BOOK

Please Contact

Helen Mears

Tel: 01362 688251

Email : [helenmears@pobroadband.co.uk](mailto:helenmears@pobroadband.co.uk)

# CONTENTS

<b>What's On</b>	<b>7</b>
December/January Events	7
Other Local Events	7
Regular Events	9
<b>Events Information</b>	<b>11</b>
<b>Letters</b>	<b>13</b>
<b>Village News</b>	<b>15</b>
Bawdeswell Village Hall	15
<b>Clubs and Societies</b>	<b>17</b>
Book Club	17
Bintree Bowls Club	19
Bawdeswell Bowls Club	21
Bridge Club	21
Bawdeswell Knit and Natter	21
Cafe Philosophique	23
Foxley Village Hall Coffee Morning	23
Flower Arranging	23
Iceni Choir	23
Little Monkeys Parent and Toddler Group	25
Short Mat Bowls	25
Wensum Valley Birdwatching Society	25
<b>Quiz</b>	<b>28</b>
December/January Quiz	28
<b>Services</b>	<b>31</b>
Community Car Scheme: Bawdeswell, Bylaugh, Foxley	31
Mobile Library	33
Post Office	33
November Quiz Answers	33
Letter from Elmham Group of Practices	35
<b>Parish Councils</b>	<b>39</b>
Bawdeswell Parish Council	39
Foxley Parish Council	41
<b>Church News</b>	<b>45</b>
Friends of Bawdeswell Church	45
Bawdeswell Church News	47
Church Letter	53
Church Services	55

# BELLE FLEUR FLORIST

Your Local Florist Tel: 01362 688897



Top Quality Fresh, Silk & Dried Flowers  
for All Occasions

Arrangements, Bouquets & Wedding Designs  
Funeral Flowers, Birthdays and Anniversaries  
25 years Experience, Delivery Service Available  
**Open 7 Days a week.**

# GIFTS & THINGS

Your Local Gift Shop Tel: 01362 688897

An Aladdin's Cave of unique gifts  
for everyone and all occasions.

Open 7 Days a week.



**VISIT YOUR LOCAL SHOPPING CENTRE**

A Selection of  
Independent Shops  
in a pleasant courtyard  
setting within



A PLEASANT WAY TO SPEND THE DAY [www.bluebellsquare.co.uk](http://www.bluebellsquare.co.uk)

# WHAT'S ON

## December/January Events

Event	Date	Location/Time
Book Group	Thurs 2 <sup>nd</sup> Dec	The Old Workhouse; 8.00pm
Bawdeswell Parish Council	Thurs 2 <sup>nd</sup> Dec	Bawdeswell Village Hall; 7.30pm
Foxley Parish Council	Thurs 2 <sup>nd</sup> Dec	Foxley Village Hall; 7.30pm
Tower Open Day	Sun 5 <sup>th</sup> Dec	St. Thomas Church; Foxley 2pm
Cafe Philosophique	Tues 7 <sup>th</sup> Dec	The Old Workhouse; 7.30pm
Christmas Wreath Fair	Sat 11 <sup>th</sup> Dec	All Saints Church, Bawdeswell; 10-1pm
Foxley Carol Service	Sun 12 <sup>th</sup> Dec	St. Thomas Church; Foxley 4pm
Mobile Library	Tues 14 <sup>th</sup> Dec	<b>New Times</b> - From 11am
Foxley Coffee Morning	Wed. 15 <sup>th</sup> Dec	Foxley Village Hall 10.30am
Bawdeswell Carol Service	Sun 19 <sup>th</sup> Dec	All Saints Church, Bawdeswell; 4pm
Cafe Philosophique	Tues 4 <sup>th</sup> Jan	The Old Workhouse; 7.30pm
Book Group	Thurs 6 <sup>th</sup> Jan	The Old Workhouse; 8.00pm
Knit and Natter	Thurs 13 <sup>th</sup> Jan	Bawdeswell Village Hall 2-4pm
Soup n Pud Lunch	Thurs 27 <sup>th</sup> Jan	Bawdeswell Village Hall 12pm
Knit and Natter	Thurs 27 <sup>th</sup> Jan	Bawdeswell Village Hall 2-4pm

## OTHER LOCAL EVENTS

Event	Date	Location/Time
Reepham Festival of Light	Thurs 2 <sup>nd</sup> Dec	4 – 7pm Market Place, Reepham
Reepham Christmas Tree Festival	2 <sup>nd</sup> – 5 <sup>th</sup> Dec	St. Mary's Church, Reepham, see page 8 for more information
Reepham Gardening Club	Tues 14 <sup>th</sup> Dec	7pm Reepham Town Hall, see page 11 for more information
Reepham WI	Thurs 16 <sup>th</sup> Dec	7pm St. Michaels Church Hall, Reepham see page 11 for more information
Reepham Gardening Club	Tues 18 <sup>th</sup> Jan	7pm Reepham Town Hall, see page 11 for more information
Reepham WI	Thurs 20 <sup>th</sup> Jan	7pm St. Michaels Church Hall, Reepham see page 11 for more information



# REEPHAM'S FIRST CHRISTMAS TREE FESTIVAL

Presented by Reepham Lions Club

St Mary's Church, Reepham

Thursday, 2 December to Sunday, 5 December 2021

## OPENING TIMES

Thursday, 2 December	4 pm to 8 pm
Friday, 3 December	2 pm to 8 pm
Saturday, 4 December	10 am to 5 pm
Sunday, 5 December	12 pm to 4 pm

**ALL ARE WELCOME TO ATTEND FREE OF CHARGE**

This community event will involve residents, groups and businesses from Reepham and the surrounding area, as sponsors, tree decorators or visitors.

There will be an opportunity for visitors to make voluntary donations, the proceeds of which will be shared between Reepham Lions and St Mary's Church, Reepham



# WHAT'S ON

Regular Events	Time/Date	Location
Zumba Fitness	Mon. 10 – 11am	Bawdeswell Village Hall
FitSteps	Mon. 11 – 12pm	Bawdeswell Village Hall
Zumba Fitness	Mon. 7 – 8pm	Bawdeswell Village Hall
Short Mat Bowls	Mon. 2 – 4pm	Foxley Village Hall
Hub Cafe	Tues. 10 – 12pm	Bawdeswell Village Hall
Let's Dance	Tues. 9 – 10am	Bawdeswell Village Hall
Zenchee Flow	Tues. 10 – 11am	Bawdeswell Village Hall
Bridge Club	2 <sup>nd</sup> and 4 <sup>th</sup> Tues. 7pm	Bawdeswell Village Hall
Let's Dance	Wed. 9 – 10am	Bawdeswell Village Hall
Zenchee Flow	Wed. 10 – 11am	Bawdeswell Village Hall
Youth Football Club	Wed. 6 - 8pm	Bawdeswell Village Hall
Yoga	Thurs. 2.15 – 3.15pm	Bawdeswell Village Hall
Fitsteps	Thurs. 7 – 8pm	Bawdeswell Village Hall
Zenchee Flow	Fri. 10 – 11.30am	Foxley Village Hall
Bridge Club	Fri. 2pm	Bawdeswell Village Hall
Short Mat Bowls	Fri. 2 – 4pm	Foxley Village Hall
Hatha Yoga	Sat. 8.30 – 9.30am	Bawdeswell Village Hall
Games Afternoon	Sat. 1.30 – 4.30pm	Bawdeswell Village Hall

## SOCIAL DISTANCING AND COVID PROTOCOLS OBSERVED



# CHRISTMAS SORTED



Visit us at [www.bawdeswellgardencentre.com](http://www.bawdeswellgardencentre.com) for upcoming events and more!

**Book a Christmas Meal:** Served November 29th to December 17th (not weekends) **Call for details**

**FOOD HALL** **LICENSED RESTAURANT** **PLANTS**  
**FURNITURE** **TOYS** **CLOTHING** **BOOKS** **GIFTS**

Norwich Road, Bawdeswell, Dereham, Norfolk NR20 4RZ Tel: 01362 688 387

**.....shop, eat, play, relax**

# EVENTS INFORMATION

## REEPHAM GARDENING CLUB

**Tuesday, December 14, 2021 - 19:00**

**It's Christmas Party Time - starts at 7pm.**

Our December Meeting (party) will also feature a brief presentation by Thomas Courtauld DL (Deputy Lieutenant for Norfolk) on 'The Queens Green Canopy'. The Queen's Green Canopy is an initiative to celebrate The Queen's Platinum Jubilee by encouraging people to plant and protect trees as a legacy to Her Majesty's Service to the Nation.

**Tuesday, January 18, 2022 - 19:45**

**'The Wonderful Medlar - Our Forgotten Fruit' - Jane Steward**

Jane is the owner of Eastgate Larder, specialist grower, and producer of medlar preserves. Jane will talk about her passion for reviving the medlar and the orchard they have planted at Eastgate.

Location: Town Hall, Church St, Reepham NR10 4JW

New members and visitors always welcome. For more information call Jeff Johnson on [01362 680066](tel:01362680066), find us on facebook or visit our website: [www.reephamgardeningclub.org.uk](http://www.reephamgardeningclub.org.uk)

## REEPHAM WI

**Thursday 16<sup>th</sup> December**

**Christmas Party Time starts at 7pm.**

**Non, Je ne Regrette Rien - David and Julie Rees**

The spellbinding songs and heart-rendering story of the life and loves of Edith Piaf.

**Thursday 20<sup>th</sup> January, 7pm**

**The Lady Lord Mayors of Norwich: 1923-2017 - Phyllida Scrivens**

The Norwich writer and biographer, will be giving an illustrated talk on the biography of the 17 remarkable and diverse women who have had the honour of being First Citizen of Norwich.

Location: St Michael's Church Hall, Reepham

If anyone is interested in becoming a member of the WI, please contact Christine Smith, Reepham WI Secretary, at [williamsmith110@btinternet.com](mailto:williamsmith110@btinternet.com).

**Qualified Foot Health Professional**

**Jennifer Hannant**

MCFHP MAFHP

Telephone: 01362 680176

Mobile: 07886 692285

Visting Practice

Registered Member of The British Association of Foot Health Professionals

EAST COAST



BLINDS & SHUTTERS



facebook

Based in Bawdeswell with over 10 years experience of manufacturing and installing high quality products.

Call us today for a 10% introductory offer for all new customers.

Mitch Amis

Te: 07950 487561

Email: eastcoastblindsandshutters@gmail.com

We specialise in:

Shutters

Roller Blinds

Venetian Blinds

Perfect Fits

Velux Blinds

# LETTERS

## A MESSAGE OF GRATEFUL THANKS

I would like to thank the clergy and congregation of All Saints Church, and all the kind friends from Bawdeswell and Foxley who have sent messages, cards, flowers and gifts during my recent hospital stay, and since my homecoming. I am very lucky to have such a supportive family and community to help me on the way back to full mobility.

Angela Shannon

## Foxley Village Hall

As many of you will have seen as you pass by Foxley Village Hall the car park has been re-laid and a patio area constructed to the side of the hall. We thank all our regulars for bearing with the disruption whilst this was being done but it has made a huge improvement to the frontage of the hall.

**ZenChee Flow** will finish for the Christmas break on Friday December 17<sup>th</sup>, starting again after Christmas on Friday January 7<sup>th</sup> at 10 am.

**Coffee Morning.** The January Coffee Morning will be on the third Wednesday of the month, on Wednesday 19<sup>th</sup> January 2022 at 10:30 am. All welcome.



**BAWDESWELL  
VILLAGE CINEMA**  
part of registered charity 800970



**NORfolk  
COmmunity  
FOundation**

## Winter Spring Programme

Saturday 11<sup>th</sup> December – 7.30 pm start

### *It's a Beautiful Life*



Come and see this annual must watch Christmas film on the big screen. Fully remastered in great 4K (brilliant picture and great sound – to those who don't know what 4K means!!) 60<sup>th</sup> Anniversary Edition – still in black and white.

Saturday 8<sup>th</sup> January – 7.30 pm start

### *The Last Bus*



John O'Groats, Scotland: An elderly man, Tom (Timothy Spall), whose wife has just passed away uses only local buses on a nostalgic trip all the way across the UK to Land's End, where they originally met using his free bus pass.

Saturday 12<sup>th</sup> February – 7.30 pm start

### *Dream Horse*



Dream Alliance is an unlikely race horse bred by small-town Welsh bartender Jan Vokes. With no experience, Jan convinces her neighbours to chip in their meagre earnings to help raise Dream in the hopes he can compete with the racing elites.

Saturday 12<sup>th</sup> March – 7.30 pm start

### *The Pebble and the Boy*



The story follows John Parker, a 19 year old from Manchester who embarks on a journey to Brighton, the spiritual home of the Mods, on an old Lambretta scooter left to him by his father. The film is a celebration of Mod culture and fashion and features music by Paul Weller and The Jam.

#### COVID 19

We prefer people use hand wash, wear masks until seated, be mindful of those who wish to keep distances and sign in for track and tracing either by NHS app or details via a written list.

**Doors Open 6.30pm, Bar/Cafe open 7pm – Films Start at 7.30pm**

**Adults £5, Over 60 £4.50, Under 18 £3, Family (2A+2C) £16 + £2 each extra child**

**Tickets on sale in Reception on the night – payment by cash and card**

**T:- 01362 688627**



BawdeswellVillageCinema

e:- BawdeswellVillageCinema@gmail.com

BawdeswellFilm1



You can also email us and ask to be put on our distribution list which will ensure that you get information about our film programme, reminders for each film and give you the opportunity to help choose our next films.



# VILLAGE NEWS

## Bawdeswell Village Hall



We are very lucky to have such a good village hall that is used regularly by people in the village and further afield. The overall responses from hirers and users is very positive. Great feedback is given on how welcoming the Trustees and BEG volunteers are. What is lovely to see is the variety of age groups using the hall, from the tiny tots to those of a more senior age. Long may it continue.

The first 'soup and pud' event held on the last Thursday of October was a great success thanks to the volunteers of BEG. Three very tasty soups and at least six different puddings were devoured and considering it was a long time since the last 'soup and pud', it was well attended. However, please make a note in your diaries for the last Thursday in the month (not December) at 12.00 to enjoy yet again the culinary delights of the wonderful creations made by the volunteers.

Another event of great success was the bingo evening driven by Bill and Jackie Cunliffe. What a fun night we had. Fantastic prizes, extra gifts for those who shouted out 'Bingo Bill', some nice raffle prizes and a well-run bar by Mr Shannon.

We are now in the possession of four air purifiers situated in various rooms within the hall that take in the air and clean it before recirculating. These machines are on castors and can be moved from room to room as required. We hope this helps reassure users that, when the weather turns and doors can no longer be left open the air circulating is being cleaned as people enjoy themselves in the hall.

We also have a new heavy curtain placed on the doors leading from the activities room to the main hall. This is so the hall and the activities room can be used at the same time with limited distraction for users.

Please do continue to book and support events in the Village Hall. Your village needs you.

Don't forget, because we're a charity you can help us raise funds everytime you shop on line. Just log on to [www.easyfundraising.org.uk](http://www.easyfundraising.org.uk) and follow the links to adopt the Village Hall as your chosen charity. Then follow a link through to your chosen shopping website. The company you're shopping with then gives a donation to our charity and it really doesn't cost you a penny!

### Contacts:

Chairman: James Lilwall - 01362 688 499

Bookings: John Mallen – 01362 688 627





*Unisex Salon*  
**Tel: 01362 288359**

Scissor Hands  
36 Norwich Street, Dereham NR19 1BX  
e-mail: scissor\_hands\_dereham@yahoo.com



**Opening Hours**

Sunday closed  
Monday closed  
Tuesday 9:00 - 6:00  
Wednesday 9:00 - 6:00  
Thursday 9:00 - 6:00  
Friday 9:00 - 7:00  
Saturday 9:00 - 5:00

*Your hair is a beautiful form of  
self-expression.  
Own it! Love it!  
- Your Crowning Glory.*

**From roots to shoots....**

# **Ravencroft Tree Services**

***Consultants & Contractors***

**TEL 01362 684291**

**[www.ravencrofttrees.co.uk](http://www.ravencrofttrees.co.uk)**

*Richard Ravencroft*

*BSc(Hons)Arb. MICFor.*

*Est. 1992*





# CLUBS AND SOCIETIES



## Book Group

The Book Group meets in the 'Saga Lounge' outside the Workhouse Bar on the first Thursday of every month at 8pm. We mostly obtain books from the library so there is not the expense of buying new books each month.

### ***"The Music Shop" by Rachel Joyce***

This book, set in 1988, tells the story of a record-shop owner. He has a rare gift for music therapy; he can find the perfect piece of music to remedy emotional or psychological woes. He can always help others, but it seems, he is very unaware when it comes to healing himself.

Frank has problems. We meet Frank in his shop on the aptly named Unity Street, his neighbours are a motley bunch of disenfranchised individuals, all with their own background stories. Unfortunately, the street and this group are under threat, a development company wants to buy then demolish the old buildings.

Frank is also not keeping up with the times. He only wants to sell vinyl not the new CDs, which the record companies see as the future. But Frank's life will change, all because a mysterious German woman looks into his window and faints. It takes over twenty years to reach the conclusion of this story.

Frank has listened to stories from his mother about classical music to jazz, to punk, and has learned that "Music is about silence.... The silence at the beginning of a piece of music is always different from the silence at the end... Because if you listen, the world changes. It's like falling in love. Only no one gets hurt."

Some of us found the audiobook online which helpfully interspersed excerpts from Frank's recommendations. A criticism from some of the group was because they felt that the story was rather 'contrived' or twee, but the delight in the music shone through.

### **Next Month's Book Group Choices**

We are currently reading "***The Serpent of Venice***" by **Christopher Moore** for discussion at our meeting on 2<sup>nd</sup> December.

Our **next** books will be "***The Uncommon Reader***" by **Alan Bennett** for discussion in January and "***Moonflower Murders***" by **Anthony Horowitz** for discussion in February.

New readers always welcome. Enquiries: **Carolyn 01362 688944**



## Coach Excursions with IC Travel!

*Pick-ups & parking from Drayton & Taverham*

*Coach Hire and Private Hire for Airport transfers etc. with 8, 16, 32 and 53 seater executive vehicles*

### December 2021

Wed 1st Dec	The Drifters Girl	8am	£70
Thurs 2 <sup>nd</sup> Dec	Brick Lane Music Hall Xmas Show & Xmas Dinner	8.30am	£75
Thurs 2 <sup>nd</sup> Dec	Newark Antiques Fayre	7am	£37
Fri 3 <sup>rd</sup> Dec	Lincoln Xmas Market	8am	£30
Fri 3 <sup>rd</sup> Dec	London at Leisure 3-day break	8am	from £185
To Sun 5 <sup>th</sup> Dec			
Sun 5 <sup>th</sup> Dec	Motorcycle Live – NEC	7.30am	£50
Mon 6 <sup>th</sup> Dec	Thursford Christmas Spectacular	12 noon	£65
Wed 8 <sup>th</sup> Dec	Wicksteed Park Xmas Show & Dinner	8am	£56
Wed 8 <sup>th</sup> Dec	Tim Peake: My Journey To Space	3pm	£63
Thurs 9 <sup>th</sup> Dec	John Rutter's Christmas Celebration	8.30am	£68
	Coach only to Kensington		£30
Fri 10 <sup>th</sup> Dec	Gary Barlow – Birmingham	1.30pm	£102
Fri 10 <sup>th</sup> Dec	Thursford Christmas Spectacular	5pm	£65
Sat 11 <sup>th</sup> Dec	Waddeson Manor Xmas Market	8am	£45 (NT £35)
Sun 12 <sup>th</sup> Dec	Holkham Candlelit Tour with Prosecco & Mince Pie	4.30pm	£43
Tues 14 <sup>th</sup> Dec	Thames River Christmas Dinner Cruise	8am	£70
Wed 15 <sup>th</sup> Dec	Thursford Christmas Spectacular	12 noon	£65
Thurs 16 <sup>th</sup> Dec	Christmas with Il Divo – Birmingham	1pm	£120
Thurs/Fri 16 <sup>th</sup> /17 <sup>th</sup> Dec	Concert Travel – Gary Barlow O2	1pm	£37
Fri 17 <sup>th</sup> Dec	London International Horse Show	7am	£80
Sat 18 <sup>th</sup> Dec	Circus 1903 – London Southbank	8.30am	£70
Sun 19 <sup>th</sup> Dec	Carols at The Royal Albert Hall	8.30am	£78
	Kensington Shopping/Museums		£30
Mon 20 <sup>th</sup> Dec	Christmas at Blenheim Palace	10.30am	A£82 C£61
Wed 22 <sup>nd</sup> Dec	Thursford Enchanted Lights	1.30pm	A£36 C£26
Thurs 30 <sup>th</sup> Dec	Harry Potter Studio Tour	9am	£75/£66

### 2022

#### January 2022

Sun 2 <sup>nd</sup> Jan	Kew Christmas Lights	10am	£55/C£47
Sun 23 <sup>rd</sup> Jan	Strictly On Tour – Birmingham	8.00am	£98

IC Travel – Unit 4, Beech Avenue, Taverham, Norwich NR8 6HW

01603 868680 [info@ictravel.co.uk](mailto:info@ictravel.co.uk)

See a full list of trips at [www.ictravel.co.uk](http://www.ictravel.co.uk)

Request our latest brochure!



# CLUBS AND SOCIETIES



## Bintree Bowls Club

The 2021/22 indoor bowls season at the Gallow Indoor Bowls Club at the Fakenham Leisure Centre is now in full swing. Some of our members captain teams which are entered in various leagues at Gallow. Dave Beresford runs teams in the Afternoon and Friday leagues. Alistair Hunter has a team in the Australian Pairs league and Colin Harris entered a team in the Afternoon league for the first time. Don't forget, we also have our Wednesday afternoon roll-up for any Bintree member who wishes to partake followed by a visit to a local hostelry for eats.

At the time of writing this article and with all available knowledge, Dave's team were top in the Friday league, defending the title they won in 2020. Alistair's team were top in the Australian Pairs and Colin's team had won 3 games in their first season. Well-done to all that take part!! Nothing compares to playing outdoor bowls on a beautiful summer's evening on the wonderful Bawdeswell bowling green but when playing indoors we don't have to carry waterproofs and umbrellas to ward off the possible rain showers!!

We held our Quiz and Chips night at Foxley Village Hall on 30 October 2021 hosted by Quizmaster, Frank Staple Moore. There was an amazing turnout of 84 guests. The quiz was won by a team led by Bonnie & Bryan Shingfield, affectionately called "French Connection". A great night was had by all and over £500 was raised for club funds. After the last article, I have heard that some people had wondered about Frank's middle name, Staple. At present, that will remain a closely guarded secret but, put it this way, it is etched into history on a remote fencepost.

By the time this issue will be in circulation, our AGM will have been held on 25 November 2021 at Foxley Village Hall. Our Xmas Dinner and Presentation Evening is being held on 18 December 2021 at Gallow. The final 100 club draw for this year will be made then as well. New members are always welcome and you can track us on our website, [bintreebowlsclub.co.uk](http://bintreebowlsclub.co.uk).

Merry Xmas and a Happy New Year to one and all!!!

# GUTTER CLEANING

We also clean windows, facias and conservatory roofs

- ✓ VERY HIGH STANDARDS
- ✓ GREAT SERVICE

S J Nye / *Member of the Window Cleaning Federation*

☎ **01603 868014** / 📠 **07717185767**

## Ladies and Gents Mobile Hairdresser

Lyng and surrounding areas

Children up to 12	from £8
Gents Cuts	from £10
Ladies Cut and Blow Dry	from £16
Ladies Re-Style	from £18
Ladies Blow Dry or Set	from £10

Colours on request

T: 01603 308999  
M: 07826 382894  
E: [hairbypoppy@aol.com](mailto:hairbypoppy@aol.com)

*Poppy*

## CLUBS AND SOCIETIES



### Bawdeswell Bowls Club

Autumn work has been completed and has gone very well. Good results achieved with the fungicide and I am still mowing between seven to eight millimetres every eight to ten days. In the next few days, I will be chisel tining to about three inches in depth. This will let air down to the roots of the turf. At the moment it looks good.

Now all three clubs will be attending league meetings to arrange fixtures for the 2022 season, so if there are any players who would like to play bowls starting mid-April we have spare bowls to help get new players started. We supply a team shirt and we play all standards of bowls.

You can contact Bawdeswell Bowls club on 01362688615, Mob 07796964574

Email [paul.digby5@hotmail.co.uk](mailto:paul.digby5@hotmail.co.uk)



### Bridge Club

Sponsored by Bawdeswell Village Hall (Registered Charity No 800970)

The JayCee Bridge Club meets in the Village Hall on the 2nd & 4th Tuesday of every month at 2pm and on Friday afternoons at 2 pm. Whilst we aspire to play well, our range of bridge abilities means that it's really bridge for fun. No regular partners are needed. If you think you might like to start playing bridge then you are welcome to come along and watch to begin with.

Please contact Roger or Patsy for information, or to confirm a session is to take place.  
Contact: **Roger Fryatt 01362 688627** or **Patsy Catchpole 01362 688352**



### Bawdeswell Knit and Natter

There are **no meetings** in **December**.

Dates for **January** are **13th** and **27th**.

2 - 4 pm at the Village Hall.

Come along and join us. New and current members welcome.

Refreshments will be available.

Enquiries: **Josie Beach 01362 688869**.



Foxley Village Hall Committee  
Invites you all to a  
Christmas Coffee Morning  
On Wednesday 15<sup>th</sup> December  
at 10:30

**All welcome**

raffle

mince pies

cakes

Registered charity: 303953

## CLUBS AND SOCIETIES



### Cafe Philosophique

*Finding good reasons for everyday beliefs*

First **Tuesday** of the month, **7:30 pm** in the Saga Lounge behind the Workhouse Bar.

Next meetings: Tuesday **7<sup>th</sup>** December - "**Mysogyny**": **Andrew**

Tuesday **4<sup>th</sup>** January - "**Lateral Thinking**": **Peter**

Contact: **Peter: 01362 688944**



### Foxley Village Hall Coffee Morning

Foxley Village Hall Committee are looking forward to welcoming everyone to their Christmas coffee morning on **WEDNESDAY 15<sup>th</sup> December at 10:30 am**. There will be the usual mix of coffee, cakes, mince pies and chat with all tables socially distanced, plus a raffle.



### Flower Arranging

**No flower arranging in December or January.** Wreath making supplies can be collected from the church on Thursday 9<sup>th</sup> December between 10-12pm. Completed wreaths to be returned on Friday 10<sup>th</sup> December before 4pm. Contact details: Julie Smith 01362 688949  
jrsohs1@btinternet.com



### Iceni Choir

Based in Reepham, the choir has come back to rehearse on **Wednesday evenings from 7pm until 8.15pm** initially to re-establish the choir after the long break.

We meet at the Methodist Church on Station Road.

Iceni is a mixed choir singing anything from 'Bach to Broadway'.

Check out the website [www.icenichoir.org](http://www.icenichoir.org) for more information or call the MD James Lilwall on 01362 688499

# Bawdeswell Garage & MOT Centre

Repairs and servicing for all makes and models of vehicles

MOTs Class IV & Class VII  
MOTs for Motorcycles Class I & II  
Recovery of Vehicles (24 hour)  
State of the art Diagnostic Equipment  
Fully Qualified Technicians



Friendly & Knowledgeable Staff - Quality Workmanship Assured  
**NEW: COURTESY CARS AVAILABLE – small charge**

**Mon - Fri: 8am - 6pm**

**Sat: 8am - 12pm**

**Tel: 01362 688731**

**www.bawdeswellgarage.co.uk**

Park Farm Buildings, Dereham Road, Bawdeswell  
Dereham, NR20 4AA



**Feel Warm, Cosy and Safe**  
with a Woodburner from Norfolk Woodburners!

**Offering the best LOCAL SERVICE!**



- Installation of Wood Burners & Multi-Fuel Stoves
- Chimneys Lined
- No Chimney, No Problem
- Fireplace Build Works
- Main agents for Parkray, Hunter & Cleanburn Stoves

T: 01328 700161 M: 07966 661175  
E: [norfolkwoodburners@outlook.com](mailto:norfolkwoodburners@outlook.com)

**www.norfolkwoodburners.co.uk**



**Louise Ledbury**  
**The Hair Room**

Fully qualified in ladies' and men's hairdressing

Trims | Children's trims | Blow dries | Rollers  
Perms | Colours

Gift vouchers now available

To book an appointment call:

**01362 688 666**

2 Saxon Meadows Bawdeswell

## MRC Pest Management

**Rats, Mice, Moles, Wasps, etc**

**Fully qualified RSPH Level 2**

**Fully Insured**

**20 years experience**

**Please call Mark on 07470146716**



## CLUBS AND SOCIETIES



### Little Monkeys Parent and Toddler Group

Bawdeswell Village Hall every Friday morning during term time, 10am – 12pm.  
£2 for you and your child, 50p for each additional child. Includes snacks.

For more information, contact **Tara** on **01362 422212**.

Find us on Facebook: Bawdeswell Little Monkeys.



### Short Mat Bowls

Foxley Village Hall      Every Monday and Friday **2 - 4pm**

To find out more, call **Dennis** on **01362 688099** or **Carole** on **01362 688567**.



### Wensum Valley Birdwatching Society

Indoor meetings at Great Witchingham Village Hall, 7.30pm. All welcome.  
(There is a £2.00 charge for non-members).

Thursday **9<sup>th</sup> December** – Christmas Social.

Thursday **20<sup>th</sup> January 2022** – Better Birding (including Low Carbon Birding) by  
Nick Moran.

Outdoor Events: Sunday **2<sup>nd</sup> January 2022** - Annual Bird Count. (Teams of 2-4  
try to record as many species as possible within the WVBS recording area  
between 8.00am and 4.30pm. We report back at the village hall as for indoor  
meetings but at 4.30.) Anyone wishing to join us should contact the Chair on  
[vvbs.chair@gmail.com](mailto:vvbs.chair@gmail.com).

**Saturday 29<sup>th</sup> January** – Hickling NWT and Stubb Mill for raptor roost.

Contact **Sue Gale** – [vvbs.publicity@gmail.com](mailto:vvbs.publicity@gmail.com) – for more information.

## Your North Norfolk Solicitors

**BUTCHER  
ANDREWS**  
Solicitors

For advice you can trust on all legal matters

1 Old Post Office Street, Fakenham.  
15 Market Place, Holt.

Tel: 01328 863131  
Tel: 01263 712023

[www.butcherandrews.co.uk](http://www.butcherandrews.co.uk) [ba@butcherandrews.co.uk](mailto:ba@butcherandrews.co.uk)



## Philip Jacobs

**Oil Fired Boiler Servicing,  
Repairs & Breakdowns**

Friendly, reliable, local service

**Tel: 01362 688 398  
Mob: 07887 902 815**



**Fully Qualified | Insured Personal Trainer**

Providing a bespoke 'at home'

Personal Trainer service aligned to your  
own personal goals.

**07765033417 | [www.VincentPT.co.uk](http://www.VincentPT.co.uk)**

*Heating homes since 1911*



**WCF Chandlers**  
Fuel oil distributors

**Why not try your  
new local fuel  
and lubricants  
supplier, located  
in Beeston near  
Dereham.**

Call us today on  
**01328 801560**

Find us on Facebook

[www.wcfchandlers.com](http://www.wcfchandlers.com)



## Christmas Cracker Jokes

**1. How does Santa keep track of all the fireplaces he's visited?**

He keeps a log book

**2. What did 52% of Brits order for Christmas dinner?**

No Brussels

**3. What did the Kremlin send MI6 in their Christmas hamper?**

A mince spy

**4. Why is Mrs Claus always checking Santa's phone?**

He seems to know where all the naughty girls live

**5. Why did Santa's elf go in for counselling?**

He suffered from low self-esteem

**6. Why does Santa have three gardens?**

So he can 'ho ho ho'!

**7. What goes "Oh, Oh, Oh"?**

Santa walking backwards

**8. Why was the snowman looking through the carrots?**

He was picking his nose

**9. What did Adam say the day before Christmas?**

"It's Christmas Eve"

**10. What's a dog's favourite carol?**

Bark, the herald angels sing

**11. Why are Christmas trees very bad at knitting?**

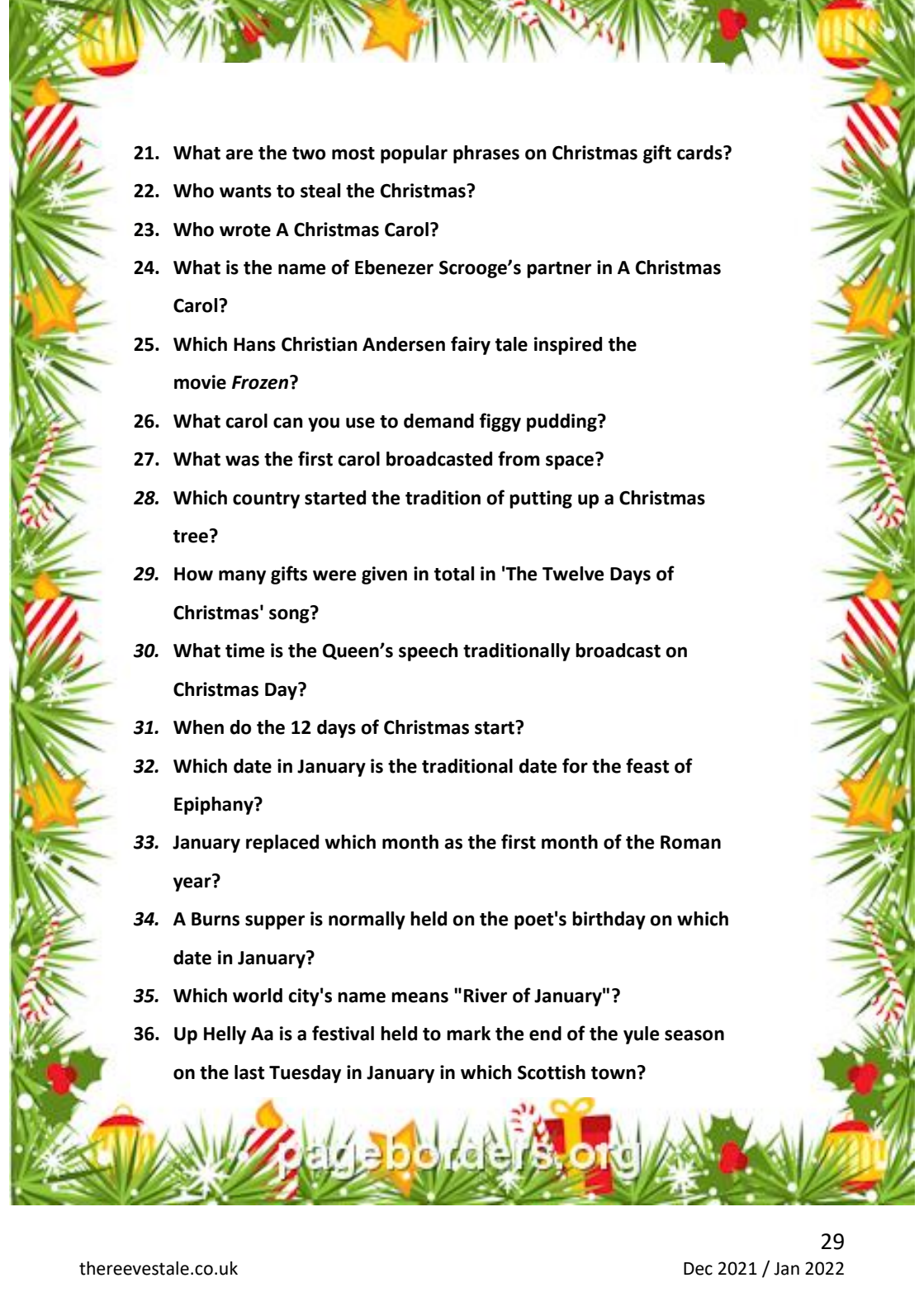
Because they always drop their needles

**12. What is the best Christmas present?**

A broken drum, you can't beat it!

## December/January Quiz

1. What is the birth flower for December?
2. Where does Father Christmas live throughout the year?
3. Which number month of the year was December originally in the Roman calendar?
4. How many reindeer does Santa have?
5. Which famous comedian died on Christmas Day, 1977?
6. Which country gave the world the tradition of the poinsettia as a Christmas flower?
7. In the Christmas song Jingle Bells, how many horses pulled the sleigh?
8. Which country donates the Christmas tree in Trafalgar Square?
9. The first royal Christmas broadcast – which monarch made it?
10. Who invented the Christmas cracker?
11. What birds are popular on Christmas cards?
12. When was the first ever organised Christmas Day swim?
13. Where did Joseph, Mary, and Jesus travel after leaving Bethlehem?
14. Who is the patron saint celebrated on the 26th of December?
15. What gifts did The Three Wise Men give Jesus on his birthday?
16. In what country was eggnog invented?
17. Who wrote the first ever king's Christmas message?
18. Where does the name "Boxing Day" come from?
19. When was Christmas first celebrated in the UK?
20. What are you supposed to do when you find yourself under the mistletoe?

- 
21. What are the two most popular phrases on Christmas gift cards?
  22. Who wants to steal the Christmas?
  23. Who wrote A Christmas Carol?
  24. What is the name of Ebenezer Scrooge's partner in A Christmas Carol?
  25. Which Hans Christian Andersen fairy tale inspired the movie *Frozen*?
  26. What carol can you use to demand figgy pudding?
  27. What was the first carol broadcasted from space?
  28. Which country started the tradition of putting up a Christmas tree?
  29. How many gifts were given in total in 'The Twelve Days of Christmas' song?
  30. What time is the Queen's speech traditionally broadcast on Christmas Day?
  31. When do the 12 days of Christmas start?
  32. Which date in January is the traditional date for the feast of Epiphany?
  33. January replaced which month as the first month of the Roman year?
  34. A Burns supper is normally held on the poet's birthday on which date in January?
  35. Which world city's name means "River of January"?
  36. Up Helly Aa is a festival held to mark the end of the yule season on the last Tuesday in January in which Scottish town?

# Reepham homehardware

Dulux Paint Mixing System | Calor Gas | Hardware | Gardening | Timber  
Electrical Tools | Shingle | Pet | Housewares | Carpet Cleaner Hire

Local Deliveries

**Tel: 01603 871064**

3 Townsend Court, Reepham, NR10 4LD

[www.reephamhomehardware.co.uk](http://www.reephamhomehardware.co.uk)

Open: **Mon-Fri** 9am - 5.30pm **Sat:** 9am - 5pm **Sun:** 10am - 12.30pm



## SKIP HIRE

wherever, wenn-ever...

Mini • Midi • Large

Extra Large With

Doors

**† 01603 881292**

Unit 2 Frans Green Industrial Estate  
Sandy Lane, East Tuddenham NR20 3JG

[www.normanwenn-skiphire.co.uk](http://www.normanwenn-skiphire.co.uk)

## J. D. Home & Garden Services



*For ..... Fencing / Patios & Paths / Carpentry / Tiling  
and much more ..... Free Estimates*

Call Jason Dobbs on 01603—872276 or 07780—988628

Email: [jdhomeandgarden@btinternet.com](mailto:jdhomeandgarden@btinternet.com)

Web Site: [www.jdhomeandgarden.com](http://www.jdhomeandgarden.com)



Aleathia Mann Ltd • Chartered Accountants

Townsend Court, Reepham

01603 871092

Church Lane, Sparham

01362 688543

Need help with your Accounts, Tax returns, Book-keeping,  
VAT or Payroll? Local, personal help, professional & competitive

# SERVICES



## Community Car Scheme: Bawdeswell, Bylaugh, Foxley

The Community Car Scheme is for the residents of the above villages who have no other means to get to medical appointments. This includes local doctors, hospitals, dentist, chiropodist or any other medical appointment.

I am very pleased to announce that we now have a new Co-ordinator - David Wheeler. He has recently moved to Foxley with his wife and he has very kindly agreed to take over the scheme with immediate effect.

His number is **07909 901015**. Please contact him when you need to book a Community Car.

Please remember to give as much notice as possible, but in the event of short notice we will still do our best to help.

In order to protect passengers and drivers, we are required to carry out a brief 'risk assessment' which will include questions relating to your mobility and covid status.

I am extremely grateful to all the volunteer drivers, past and present who have made this role very pleasant and easy for me. I am sure that with David as Co-ordinator the scheme will continue to operate successfully, and I wish you all the very best for the future.

Best Wishes  
Jackie Cunliffe

# DA PLUMBING SERVICES

1 Two Fields Way, Bawdeswell, Dereham, NR20 4TQ

**Local reliable plumber**

**Qualified and fully insured - All work guaranteed**

**All plumbing work undertaken - Free estimates**

**Central Heating Power Flushing**

**Blocked drains**

**Oftec Registered Technician - 24 Hour call out**

**Oil boiler due for a service,  
broken down or needs replacing**

**Call David on 01362 688997/ 07771602218**

## HILL BARN

Residential Care Home, Church Lane, Sparham, Norfolk  
CQC rating: Good | email: [hillbarn.lynsey@btconnect.com](mailto:hillbarn.lynsey@btconnect.com)

We are a family-run Home for the elderly with a reputation for providing good quality care in a friendly and homely atmosphere. The Home offers:

Attractive landscaped gardens with open countryside views | 24 hr individually tailored care with highly trained dedicated staff | Ground floor accommodation, most rooms with en suite facilities  
Home cooked food, all diets catered for | Visiting Hairdresser, Chiropodist, Opticians etc  
Day Care provided | Pets considered | Single luxury en-suite ground floor room available

**For further information please contact**

**Registered Manager Lynsey Spearing - 01362 688702**

## Charles Seaman

Interior/Exterior Painter and  
Decorator

**Tel: (01362) 688309**

2 Bell Close, Bawdeswell  
Dereham, NR20 4SL

ADC Plumbing & Heating Ltd

From dripping taps to full installations  
Free quotes

[Andychristie430@btinternet.com](mailto:Andychristie430@btinternet.com)

Mobile: 077206 06936

Tel: 01362 688083

Bawdeswell



# SERVICES



## MOBILE LIBRARY

Tuesdays 14<sup>th</sup> December & 11<sup>th</sup> January

### Note new times

BAWDESWELL	VILLAGE HALL	11:00 -11.25
BAWDESWELL	PARADISE ROAD	11:30 – 11.40
BAWDESWELL	CHAUCER CLOSE	12:30 – 12.45
FOXLEY	VILLAGE HALL	12:55 – 13.10



## Current Opening Hours and Locations

Tuesday	Bawdeswell Church	9.00am - 12.00pm
Friday	Bawdeswell Church	9.00am - 12.00pm

## November Quiz Answers

- |  |                  |
|--|------------------|
| 1. All Hallows' Day                            | 6. Armistice Day |
| 2. Tutankhamun                                 | 7. St Andrew     |
| 3. 1605  | 8. Thanksgiving  |
| 4. Robert Catesby                              | 9. Phonetic      |
| 5. Plot to blow up King James 1 and Parliament | 10. Laika        |



Every Monday at 11am and Thursday at 7pm  
Energetic up beat dance fitness class featuring all your  
Strictly favourites. Suitable for all ages and abilities.



Every Monday at 10am and 7.30pm  
£5 per class

Come on your own or bring a friend, everyone welcome!  
Bawdeswell Village Hall, Reepham Road, NR20 4RU  
For more details contact Laura  
01362 692021 or 07845 578689

## **G.P. Landscaping & Building Maintenance**

**Fencing specialists for all your  
domestic, commercial and security needs**

Using the best quality materials that last the longest!

Also undertaking all hard landscaping:

**Paths | Patios | Paving | Driveways | Turf  
Brickwork Decking | Garden Clearance | Ponds | Pergola's**

Local | Fully Insured | Portfolio on request  
Free quotations | CSCS holders (Health & Safety)

Call Paul: **07971 771204** Evening: **01362 688159**

**[www.gplandscapingnorfolk.co.uk](http://www.gplandscapingnorfolk.co.uk)**

# SERVICES

## Update to PPGs from Elmham Group of Practices – November 2021

Our last update to you all was in mid-August, from Judith Wood. As she informed you then, Judith was planning to retire at the end of September, and we hope we gave her a good send off! I know she very much appreciated the visit on her last day from Roger Thornely and Liz Waddy, on behalf of the PPGs, to present her with a gift.

The Senior Management Team have been running the practice since then, but we have our new Practice Manager, Lian Tan, joining us from 8th November. Lian has a background in management as well as experience in the health sector. She has moved with her whole family to Norfolk, and we are very excited about her joining us.

We have been having discussions about when to restart our Patient Participation Group meetings. It seems sensible for all the reasons that Roger and Liz have shared with us that we delay meeting till the middle of January. Bawdeswell village hall seems to be the most convenient and best placed venue and I would imagine that this will be a significant meeting that Lian and all the partners will want to attend.

### **Operational issues.**

**Telephone system:** We continue to hear from patients about the difficulties in getting through on the telephone. We are sorry that this remains the case and are genuinely grateful for the feedback that we receive from patients alerting us to specific issues.

The background to this was covered in Judith's last update. At its simplest we have a 'pre-pandemic' phone system in a 'post-pandemic' world: it is just not up to the job that we are now needing it to do. The good news is that our new phone system goes live on 3rd December. This will not be the single solution to the problem, but the increased functionality will remove some of the annoying failings and shortcomings that the current system has; please bear with us as we learn how to make best use of the system in the first few weeks. Our advice to patients is still to avoid phoning in at 8.30am unless there is an urgent or pressing need to contact the surgery at that time.

The partners regularly change the outgoing message on the phone to reflect the operational circumstances of the day. Same day telephone triage appointments are offered for both urgent and routine problems all day from Monday to Thursday and until midday on Friday. On Friday afternoons the clinicians can't accept non-urgent cases and expect to complete them before the start of the weekend.

**Appointments:** Patients are asked to phone up and tell the Receptionists what their problem is so they can be directed to the most appropriate clinician or team. After a consultation, if the doctor or Nurse Practitioner thinks that a face-to-face appointment is needed, or if the patient feels that their problem cannot be dealt with over the telephone or on a video consultation, then an appointment is given for later that same day or on another agreed day.

The demands on Primary Care throughout the pandemic, due to both increased workload as well as reduced numbers of clinicians, means this is the most efficient way of meeting the health needs of our communities. It is not how General Practice used to be organised, but a lot of patients find this new way of working more convenient and for those who really do need to 'see the doctor' then this can be discussed over the phone.

Patients are often surprised however at how much can be achieved remotely and it means that many more patients can be dealt with, without the long waiting times for appointments that would be the inevitable consequence of an open-access system.

We regularly discuss the timetable for a return to 'business as normal' which may include a combination of both pre-bookable appointments (as in the past) and remote consultations. We are limited by the uncertainties of the pandemic and need to ensure the surgery buildings remain a place of safety, adhering to Health and Safety and Infection Prevention and Control guidance, to minimise the risk to all our patients, but especially our most vulnerable. We will naturally keep you all informed about these plans as they evolve.

**Dispensary:** We have made some changes over recent months to improve the service in the dispensary. Staff numbers have been increased to deal with the almost 20% increase in items which the staff are processing every month; the current monthly average is now at a level previously only seen at times of peak demand, typically at Easter and Christmas. There is now also a second delivery driver to work alongside the one we have always had, in order to cope with the number of home deliveries to our elderly house-bound patients. The outside second hatch at Elmham surgery also allows more patients to be served. We still aim to maintain the turnaround time of three working days for routine prescriptions, as well as dealing with the urgent same day prescriptions generated by clinicians and pharmacists.

**Staffing:** We are fully recruited in our Reception and Dispensary departments. Staff still need their holidays and of course need time off when they or their children get Covid or have to self-isolate. We are very proud of how the staff have worked in these patient-facing roles throughout the pandemic whilst they too have been dealing with the stresses of what we are going through. Our secretarial team is also responding to new ways of working and are taking on much more responsibility in communicating with patients and dealing with problems that previously might have been managed by clinicians.

**Toftwood Medical Centre:** Elmham Group of Practices continues to hold the APMS contract to deliver care to patients in Toftwood. This is an important part of the ethos and business model of the organisation and it supports the Dereham practices and whole patient population. We are looking to move the surgery in to temporary accommodation in the Spring due to the inadequacies of the current building, and this will also be a hub for some of the clinical and support staff employed by the Primary Care Network. The work done in Toftwood complements the work at Elmham and Swanton Morley surgeries and does not detract from the delivery of care at these other sites.

**Army:** The role that Elmham Group of Practices has had in managing the Medical Centre at Robertson Army Barracks comes to an end on 30th November. We have provided clinical cover for the Light Dragoons and more recently the Queens Dragoon Guards for over 15 years; it has been a privilege to have been involved with them, particularly so during the times of conflict when they were deployed abroad.

## **Vaccination programmes at Swanton Morley surgery.**

Judith reported last time that we had delivered first and second covid vaccinations to the patients in mid Norfolk on behalf of the Primary Care Network of local GP surgeries. Over the summer the team has continued to deliver this to younger adults and are now engaged in rolling out the booster programme. In total 39,283 jabs have been given, and from October over 1,600 further booster jabs to the Clinically Extremely Vulnerable and frontline health care workers have been given, both at Swanton Morley surgery and in care homes.

From the outset, back in late 2020, the partners felt there was a clinical imperative to set this up as we were probably the only organisation locally that could roll it out so rapidly and deliver it so efficiently. The project team and volunteers have worked incredibly hard - often at weekends and anti-social hours - to do this within the very strict guidelines that the Department of Health has imposed.

The mass vaccination site at Dereham Hospital is now up-and-running and we will be considering whether there is still a need to offer Covid booster jabs to the community in the coming months.

The roll out of flu vaccination has now started for our own patients, also out of Swanton Morley surgery, but as in previous years is reliant on supplies coming in from NHS England. We have restarted offering appointment for blood tests and ECGs at Swanton Morley surgery on non-vaccination days and are pleased that the NNUH ultrasound team have returned to the building to start doing scans again.

## **Long Term Conditions.**

We are aware that many patients with Long Term Conditions who need regular blood tests and follow up have been concerned over the last 18 months about their care. At the peak of the pandemic we were advised to put all of this on hold but were then able to provide a limited service with nurses contacting patients and doing virtual reviews. Over the last few months nurses have been operating as normal a service as possible and are now making significant progress in catching up with all patients needing a review.

## **Pandemic issues.**

We continue to remain concerned about this coming winter and how the NHS will cope with the ongoing threat of Covid and the very real risk of an Influenza outbreak. We have regular updates from the Norfolk and Norwich and Queen Elizabeth, Kings Lynn, Hospitals and are aware of the tremendous pressures they are under and how hard their staff are working. There is an obvious impact on our patients whose planned and unscheduled care is affected. We are doing our best to expedite the follow up of those patients whose clinical condition needs prioritising.

The Department of Health regularly provides GP surgeries with advice on maintaining a safe environment. For the time being we still ask patients to attend with a face-covering unless exempt. Staff will still be wearing PPE during the consultations.

We are very grateful for the support and words of encouragement that we continue to receive from our patients. These are very much appreciated and mean a lot in these difficult times.

Dr Simon Carroll

# Joanne Medler Hypnotherapy

FHT Registered Hypnotherapist, NLP & EFT Practitioner in North Elmham

*Helping people  
overcome various  
life issues.*

Contact me to see how Hypnotherapy  
may be able to help you:

Call: 07766 870145

[joannemedlerhypnotherapy@gmail.com](mailto:joannemedlerhypnotherapy@gmail.com)

[www.joannemedlerhypnotherapy.com](http://www.joannemedlerhypnotherapy.com)

## **P.C.S.** "The Gas Experts"

Distributors for Industrial Gases, Propane and Butane plus  
all types of Welding Equipment and Consumables

**01362 820656** (Free Delivery)

**DON'T SHIVER, WE DELIVER**

[mail@pcswelding.co.uk](mailto:mail@pcswelding.co.uk)



## **The Norfolk Sweep**

Friendly, Professional Service • Fully Insured  
All Types of Chimney / Flues Swept

**Anthony Walden**

Tel: 01362 680189 [www.thenorfolksweep.co.uk](http://www.thenorfolksweep.co.uk)



# PARISH COUNCILS

## MEETING OF BAWDESWELL PARISH COUNCIL HELD ON THURSDAY 4<sup>th</sup> NOVEMBER 2021 AT 7.30pm

**Present:** B.Cunliffe (Chair), J. Mallen, A. Toomey, A Hartley-Walder, K. Ewing, R. Reed and Mrs. J Boxall (Clerk). **Members of the public – 1**

District Councillor G. Bambridge, County Councillor B. Borrett and the Police were not in attendance.

**Play area** – The Clerk circulated a report on the play area for consideration and confirmed that only £68.99 of the £2500 2021/22 budget allocation had been used. Following discussion, the Council unanimously agreed to accept a quote for £1928 for the complete replacement of the toddler swings. For safety, it was agreed to remove the seats and chains until the replacement could be installed, which was likely to be in the spring.

### **To consider projects / expenses for precept budget**

Projects put forward for consideration included the play area – replacement of surfacing under the play equipment and the repair / replacement of equipment as necessary. Queens Jubilee – as it was understood Breckland were offering grants of up to £500 to cover celebrations it may not be necessary for the Council to budget for this. The installation of a noticeboard at Bluebell Rise and potential repair / resurfacing of the village hall driveway were also raised for consideration.

**Planning applications** - No new planning applications were received.

**Future agenda items** - precept considerations.

**Councillor resignation** - Cllr Cunliffe tendered his resignation and thanked fellow Councillors for their support. Thanks were extended to Cllr Cunliffe for his dedication to the community and his role as Chairman. Breckland District Council have been notified and the Notice of Vacancy will be displayed once received. Cllr Mallen agreed to chair the meetings until a new Chair is elected.

**Other matters** - The Council contacted Highways regarding the verge cutting at Adams Pit. A further email was sent requesting details of when the verges were last cut but no response has yet been received.

A quote was received from Ravenscroft to carry out the tree survey, in accordance with the financial standing orders, it was agreed to accept the quote. It is hoped that the report would be available for consideration at the next meeting.

# Hendry & Sons Funeral Directors

Private Chapels of Rest  
Member of N.A.F.D



**01362 683249**

Station Road, Foulsham, Dereham, Norfolk

## Moor Farm Stable Cottages

Moor Farm, Foxley, Dereham, Norfolk, NR20 4QP

A Courtyard of 8 2/3 Bedroomed Converted Stables and Barns  
**Holidays, Long or Short Term Lets**



**OPEN ALL YEAR**

**Tel: (01362) 688523** (24hr answerphone)  
(01362) 688393 (evenings)

Email: [mail@moorfarmstablecottages.co.uk](mailto:mail@moorfarmstablecottages.co.uk)

[www.moorfarmstablecottages.co.uk](http://www.moorfarmstablecottages.co.uk)

Competitive Service

## Y's Book Keeping Services

Local, friendly, family run business specialising in small businesses

Onsite or Remote Book Keeping  
VAT Returns, Payroll, CIS and Self-Assessment Returns

📞 01362 688122 📠 07979 525709 ✉ [Yvonne@ysbooks.co.uk](mailto:Yvonne@ysbooks.co.uk) / [Wendy@ysbookkeeping.co.uk](mailto:Wendy@ysbookkeeping.co.uk)  
The Hawthorns, Billingford Road, Foxley, Dereham, NR20 4QY



## **PARISH COUNCILS**

### **Bawdeswell continued:**

#### **Finance**

The balance of the Community account as at end of October 2021 was confirmed as £27656.54, Business Money Manager was £2259.00 and the Project Bawdeswell account (earmarked reserves) remains £6655.96. The Community Car Scheme balance confirmed as £1169.86 as the Community Car Scheme grant of £750 was received.

**The next meetings of the Parish Council will be held on Thursday 2<sup>nd</sup> December 2021 and 3<sup>rd</sup> February 2022 starting at 7.30pm. There is no meeting in January. It is hoped these meetings will be held at the Village Hall with social distancing measures in place. Members of the public are warmly invited to attend.**

**If you have any concerns please contact the Parish Clerk Jo Boxall, White House, Pettywell, Reepham, NR10 4RN, Tel: 01603 879480, Email: [bawdeswellpc@hotmail.com](mailto:bawdeswellpc@hotmail.com)**

**Full draft minutes from this meeting and minutes from previous meetings, including financial / audit information and policies can be found on the Parish Council website <http://bawdeswell.norfolkparishes.gov.uk>**

### **Foxley Parish Council Meeting**

The next meeting of Foxley Parish Council will be on Thursday 2<sup>nd</sup> December at 7:30 pm in Foxley Village Hall.

# Supporting your independence



The answer to better homecare starts with the people we recruit. We take the time and effort to recruit carers who are genuinely caring, patient, kind and reliable and we train them to the highest standards of professional care.

We pay significantly more than the average.

**We believe in teams:** they give our clients consistency and continuity and they give our carers a mutual support structure and team spirit.

For every client there is a lead carer, supported by one or two others who you will come to know as your home team. We aim for there always to be a familiar face.

**Our services include:**

- Personal care including washing and dressing
- Meal preparation, snacks and drinks as you like them
- Assistance with medication
- Companionship, indoors and out and about
- Light housework and laundry
- Shopping, errands and appointments
- Dementia care

To discuss how we might help telephone  
01603 926465

[www.thehometeam.care](http://www.thehometeam.care)

## The new homecare provider for Norfolk

When living  
independently  
becomes more  
of a challenge

the  
home  
team®

supporting you



Visit the tower and find out what **bell ringing** is like:

- why it can be the perfect social activity for all ages (10+) and great exercise
- the world's heaviest and loudest musical instruments – exhilarating!
- for all faiths and none with no need to be musical or strong

At **St Thomas Church, Foxley**

On **Sunday 5th December**

Time **2 - 4pm with bell-ringing demo at 4pm**

More information



Join the Heart of Norfolk benefice bell-ringing team!  
Free-of-charge tuition by expert teachers!  
Come and have a go, we'd love to see you!

[bellringing.org](http://bellringing.org)





# Foxley Carol Service

St Thomas's Church

4pm Sunday 12th December 2021

With All Saints Festival Choir

# CHURCH NEWS

**The Friends of Bawdeswell Church**  
**'protecting & enhancing this unique building**  
**for the future'**



Unfortunately, due to unforeseen circumstances, we had to postpone the Race Night until next year; Saturday 28th May 2022, is the new date. Thank you to all those that kindly bought horses and sponsored races and who agreed for us to carry these over until next year. Sorry for any inconvenience, I'm told 'the going' is likely to be much better in May than in November, so do save the date!

Now Christmas is fast approaching and the **Christmas Wreath Fair** takes place on **Saturday 11th December from 10am - 1pm in the Church.**

We are looking for wreath makers this year. We supply all the items you'll need including cut foliage, ribbon, bows, decorations etc. These can be collected from the church on **Thursday 9th Dec between 10am – 12pm.** If you can't make that time all the items will be left in the church, so collect at your convenience. All we ask is you return the wreath(s) to the Church on **Friday 10th before 4pm** when we'll be setting up ready for the fair to open on Saturday at 10am. If you would be interested in making a wreath(s) at home please let us know. There are spaces for craft and seasonal stalls; although there are restrictions so do let us know if you would like a pitch.

Thanks again to Julie Smith and her helpers for making this event possible!

## **2022 events:**

Jan 22 <sup>nd</sup>	100 Club Members Reception	Church View	7pm
May 28 <sup>th</sup>	Race Night & Supper	Village Hall	7pm for 7.30pm
March 26 <sup>th</sup>	Table Top Sale	Village Hall	10am - 2pm
July 31 <sup>st</sup>	Festival Players	Bylaugh Hall	Gates open at 12pm for 2pm
Oct 15 <sup>th</sup>	Harvest Supper with Quiz	Village Hall	7pm for 7.30pm
Dec 10 <sup>th</sup>	Christmas Wreath Fair	Church	10am – 2pm

All ticket information and further enquiries from 01362 688499 or [pjlilwall@hotmail.com](mailto:pjlilwall@hotmail.com)

James Lilwall – Chairman

David Shannon – Treasurer

Peter Jervis – 100 Club Secretary

Committee Members – Robin Taylor, Sandi Taylor, Angela Shannon, Susan Lilwall, Jamie & Mel, Jo Porter, Anne Toomey and Josie Beach.



 The Old Police House  
Bawdeswell, NR20 4RS

 caroltaylor123@hotmail.co.uk

 01362 688508

**• Birth to 5 years**

**• Qualified and friendly staff**

**• Before and After School Care inc drop off and collection at Bawdeswell School**

**• 15 and 30 hours a week places available for 2, 3 and 4 year olds**

**• Childcare vouchers accepted**

**• Holiday Club**

# CHURCH NEWS

## Bawdeswell Church News



At the end of October, we enjoyed meeting Bishop Jane, the new Bishop of Lynn, and were joined by members of the Reepham benefice for a short service of Morning Prayer in the church followed by coffee at the Village Hall Hub. Many thanks to the warm welcome extended at the Hub. Bishop Jane's home is now in Dereham and we look forward to getting to know her better. We all took to her.

Then on the first Sunday of November we had the long-awaited visit from Bishop Graham of Norwich who had spent the week in Glasgow at the COP-26 gathering. He was in great form, had the congregation laughing, and gave us a thought-provoking sermon, "facing the future by what we have learnt in the past". It was a lovely service and helped with the singing of the All Saints Festival Choir. The collection has been sent to the Bishop's urgent appeal in support of refugees arriving in Norfolk and Waveney. Thank you for those who responded generously to that; it raised £156.

A special thank you to Julie and Jackie for the flowers, and Ruth and Sandi for the refreshments.

The following Sunday was Remembrance Sunday, well attended again, and also the choir was back with us.

At the reading of the fallen in both World Wars, we also named those killed in Bawdeswell's plane crash and Foxley's two plane crashes.

Thank you all who took part in different parts of the service. It is always a very moving occasion involving several individuals' participation.

This is a busy season for the Festival Choir. They are due back for the Advent Carol service on 28<sup>th</sup> November and Christmas Carol Service on 19<sup>th</sup> December. Don't miss these. They will both be followed with mulled wine and seasonal nibbles.

Christmas Day is on a Saturday this year and the service will be a Family Communion at 10.30 with carols followed by Buck's Fizz and mince pies.

There is no service in Bawdeswell on Sunday 26<sup>th</sup>.

*Thank you.  
Robin Taylor, Churchwarden*



**ALL SAINTS**  
**Bawdeswell**  
**CHRISTMAS**  
**WREATH**  
**FAIR**

**Crafts & Seasonal Produce  
Stalls**  
**Homemade Christmas cakes  
and puddings FOR SALE**

**Saturday 11<sup>th</sup> December**  
**10am – 1pm**

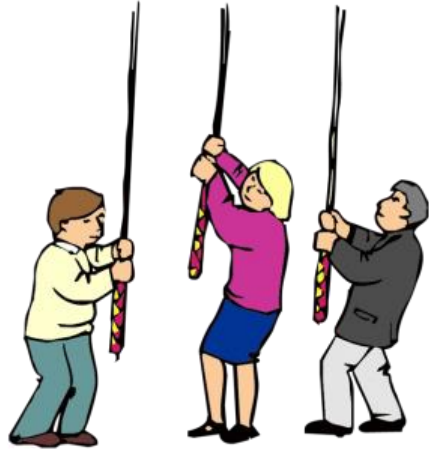


# CHURCH NEWS

## *St Thomas, Foxley*

### Bell Ringing Practise

will take place on  
Sunday 5<sup>th</sup> December  
at 4pm  
but there will be no  
practice in January or  
February 2022



The short, informal service of

### Evening Prayer

with the Rev Christine Wheeler

will take place on  
Sunday 5<sup>th</sup> December at 5pm  
but there will not be any  
services in January or  
February 2022



# Swannington Windows



*30 years' experience, family run,  
honest, friendly business, no hard  
sales tactics*

We supply & install:

Windows – wide colour range

Doors – wide colour range

(composite/upvc)

Conservatories - (roofs – glass, p –  
glass, polycarbonate, solid/warm)

French /sliding/bio-fold doors

Fascia, soffits, guttering, cladding

Porches, Car Ports & Canopies

Roof Lanterns

A rated glass

Visit / telephone us at  
Unit 7, Emmerson Ind Est,  
Lenwade NR9 5SA  
01603 555520 / 07796 171325  
Email –  
david@swanningtonwindows.co.uk  
Website –  
www.swanningtonwindows.co.uk



We look forward to hearing from  
you!

# ALL SAINTS BAWDESWELL

*this Christmas*

## SUNDAY 19<sup>th</sup> DECEMBER

Carol Service with The All Saints Festival Choir  
4pm | Seasonal refreshments available

## CHRISTMAS DAY

Family Holy Communion with Carols  
10.30am | Seasonal refreshments and a glass of fizz



*We'd love to see you there*

# J & A CHALCRAFT

Painters and Decorators

*Interior & Exterior Painters & Decorators*

Over 30 Years Experience

Tel: 01362 688929

Mobile: 07917275805/ 07961718654

Email: [jamie.chalcraft@hotmail.co.uk](mailto:jamie.chalcraft@hotmail.co.uk)

The Everglades, Old Fakenham Road,  
Foxley, Dereham, Norfolk. NR20 4QJ



**INDEPENDENT  
MERCEDES SPECIALIST**

Servicing · Diagnostics · Repairs

**01362 695 906 · 07498 227556**

Rash's Green Ind Est, Dereham, NR19 1SX

[prestigeautomotiveservices.co.uk](http://prestigeautomotiveservices.co.uk)

## Hairdressing in the comfort of your own home

40 years' experience and offering trims, perms, colours  
and everything in between

If you would like a chat, free consultation or appointment  
please call Jane on

**07471903851**

I look forward to hearing from you!

# CHURCH NEWS

## Church Letter

Dear Friends,

### REAL CHRISTMAS

Every year somebody will say to me "it seems that Christmas is too commercial". I remember, just a few weeks ago, reading in the paper "Prime Minister saves Christmas". Let us be clear; real Christmas, the birth of Jesus, is God's gift to us all. Some restrictions may make it a little different - but the joy of Christmas remains.

I can look back over seventy Christmases - so, let's go back to 1947 - when I was three and a half. Sights and smells of Christmas Eve - my Granny took me to Church for the Blessing of the Crib. There was the sweet smell of incense mingled with polish. There were candles and greenery everywhere. The Crib was large and I looked at it with a sense of wonder - I couldn't put it into words but the long-ago memory of Christ Church on Christmas Eve is with me still.

Christmas Day was a family occasion - Grandparents, Parents, Aunts and Uncles all crowded round the dining table. Fuel was in short supply but Granny had somehow obtained some extra coal and there was a much bigger fire than usual. Yes, we had a Christmas tree - but I didn't receive loads and loads of presents. My pride and joy was a highly coloured 'humming top' - does anybody remember them? I'm told that the grown - ups got a bit fed up with the humming and erratic movements on the floor. Apparently, my father hid it away for the rest of the day!

Now in 2021 we are once more preparing for Christmas. Carols, crackers, a decorated tree - and in many homes a real feast and a host of presents. I hope that each one of us will have a happy and peaceful day, remembering that our celebrations are centred on a stable in Bethlehem and the birth of Jesus. May we echo the angel's song " Glory to God in the highest and peace to His people on earth ".

Every Blessing and Happy Christmas,

Fr. Michael.

P.S. See you in Church.

# DAVIS EGG SALES

MOOR FARM, FOXLEY, DEREHAM, NORFOLK, NR20 4QN

**Your Local Egg Supplier**



Pre-packs | Keyes Trays | Free Range  
**Deliveries throughout East Anglia**

**Tel: (01362) 688523**  
**www.daviseggsales.co.uk**

## AquaFix

Bathrooms & Kitchens

### COMPLETE

Bathroom/Shower room,  
Wetroom & Kitchen  
fitting service

Plumbing work | Floor & Wall Tiling  
General Property Maintenance

No job too small

**01362 688678**  
07877 427344

## INDOOR HEATED SWIMMING POOL AND SPA

Available for hire  
for your private use

Moor Farm Foxley  
**Tel: 01362 688523**

# BAWDESWELL and FOXLEY

## CHURCH SERVICES

### DECEMBER 2021/ JANUARY 2022

<b>Date</b>	Sun 5 <sup>th</sup> Dec	Sun 12 <sup>th</sup> Dec	Sun 19 <sup>th</sup> Dec	Sat 25 <sup>th</sup> Dec
<b>Season</b>	Advent 2	Advent 3	Advent 4	Christmas
<b>Bawdeswell</b>	10.30am HC	The 10:30	4pm Carol Service	10.30am HC
<b>Foxley</b>	5pm Evening Prayer	4pm Carol Service	-	-

<b>Date</b>	Sun 2 <sup>nd</sup> Jan	Sun 9 <sup>th</sup> Jan	Sun 16 <sup>th</sup> Jan	Sun 23 <sup>rd</sup> Jan
<b>Season</b>	Christmas 2	Epiphany 1	Epiphany 2	Epiphany 3
<b>Bawdeswell</b>	10.30am HC	The 10:30	10.30am HC	10.30am Words & Praise
<b>Foxley</b>	-	-	-	-

Services from Bawdeswell are usually available on Zoom.  
Details of how to join in are detailed in the Weekly Church Bulletin  
which can be viewed on the Benefice website at:  
[www.heartofnorfolkchurches.org.uk](http://www.heartofnorfolkchurches.org.uk)

Please email [heartofnorfolkchurches@gmail.com](mailto:heartofnorfolkchurches@gmail.com)  
if you would like a copy emailed to you each week.

**Revd Sally Kimmis Team Rector:**

48 Holt Road,

North Elmham NR20 5JQ

[heartofnorfolkrector@gmail.com](mailto:heartofnorfolkrector@gmail.com) Tel: 01362 668850

**Revd Canon Christopher Davies:**

[cjoldrectory@gmail.com](mailto:cjoldrectory@gmail.com) and mobile 07702 865412



A **great** selection of **independent shops** set inside **Bawdeswell Garden Centre**

[www.bluebellsquare.co.uk](http://www.bluebellsquare.co.uk)  
10 shops under a single roof

### Tudor Rose Miniatures

Doll Houses | Miniatures | Accessories & Supplies | Workshops

**Tel: 01362 688669**  
closed Mondays

### Gifts & Things

An Aladdin's Cave of unique gifts for everyone and every occasion

**Tel: 01362 688897**

### Belle Fleur Florist

Top Quality Fresh, Silk & Dried Flowers for all occasions. Delivery available

**Tel: 01362 688897**

### Dalvey of Scotland

Exclusive range of gifts for men.  
Open 7 days a week.

**Tel: 01362 688897**

### Animal Art

Animal Art Studio & Gallery exhibiting a variety of drawings to view or purchase

**Tel: 07748 908518**

### the Little Stained Glass Shop

Stained Glass | Copper Foil | Leadwork & Fusing Commissions | Repairs | 25 Years' Experience

**Tel: 01362 688735**  
closed Mondays

### Romba Handbags

High Quality Leather & Novelty Handbags & Accessories

**Tel: 01362 688866**

### Romba Footwear

Shoes of Comfort & Style | Wide Fitting Orthotics | Padders, Rieker and more...

**Tel: 01362 688866**

### Bobbins and Threads

For all your alterations, curtain making, haberdashery, crafts and hobbies.

**Tel: 07748 563656**

### Paperstory

Art and craft supplies, local art and crafts & workshops. [www.paperstory.co.uk](http://www.paperstory.co.uk)

**Tel: 01362 693624**



A pleasant way to spend the day.

Bluebell Square  
Norwich Road  
Bawdeswell  
Dereham  
Norfolk, NR20 4RZ

tel: 01362 688387  
web: [bluebellsquare.co.uk](http://bluebellsquare.co.uk)